



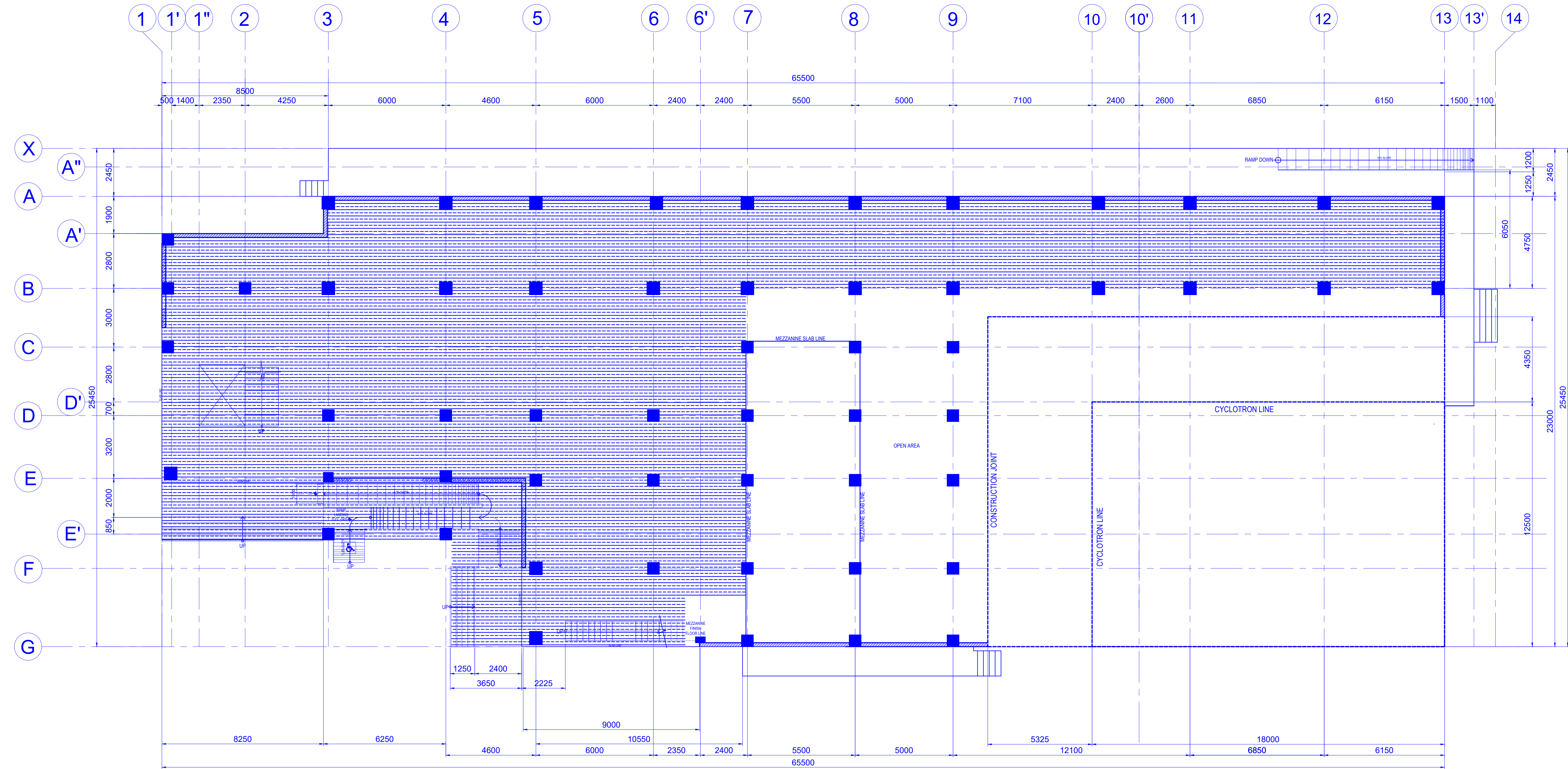


WALL LEGENDS		
		150mm thk. CHB W/ 10mmØ DEF. REBAR @ 0.60 O.C. B.W.
		200mm thk. REINFORCED CONCRETE WALL (Phase 1)



1  
A-2  
GROUND FLOOR PLAN  
SCALE 1:100m

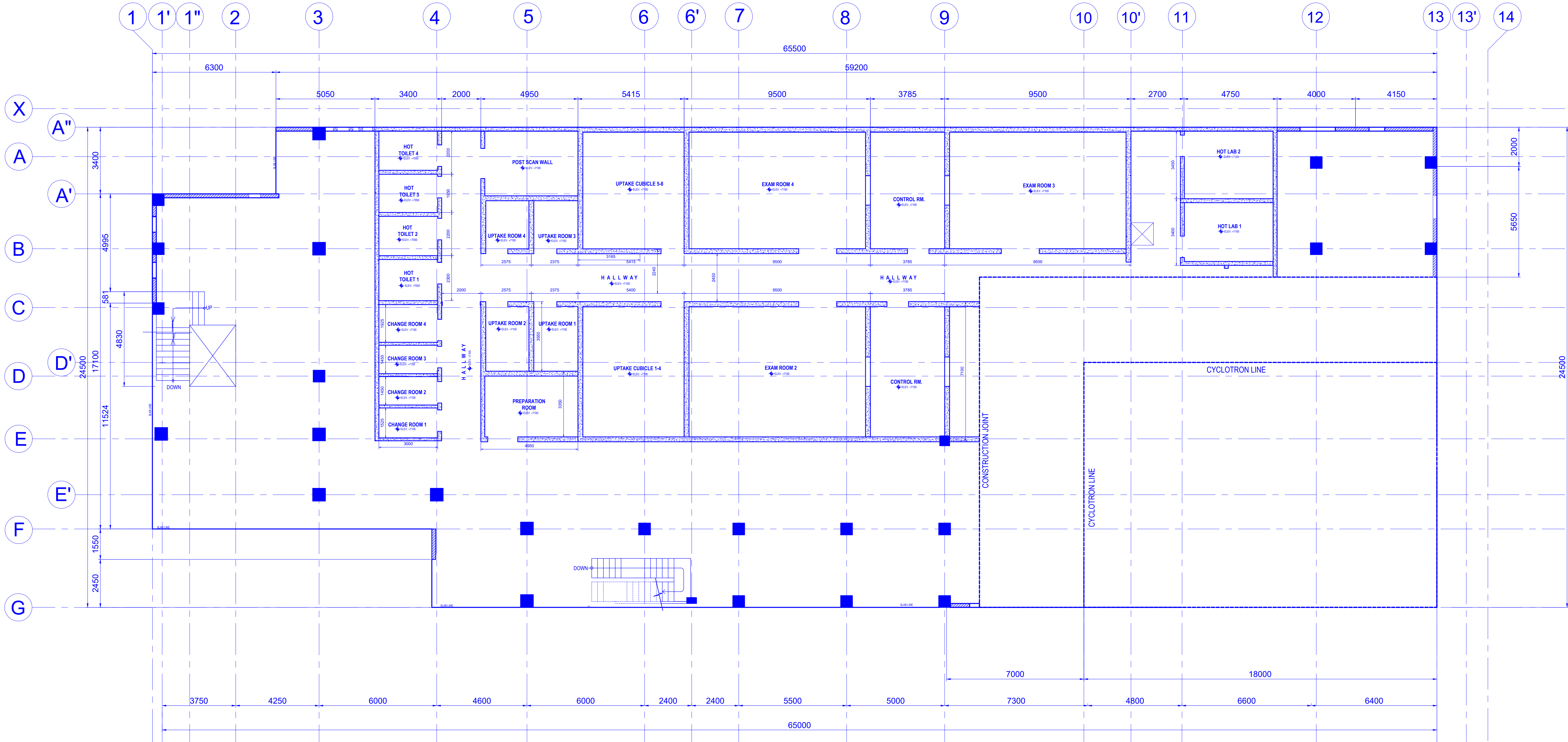
 <div>E. A. RAMIREZ CONSTRUCTION, INC. DESIGNER      DEVELOPER      BUILDER  Location : EARCEN Bldg., 31 Commonwealth Ave. Ext., Brgy. Sta. Monica, Quezon City 1117 Tels. : +63 9259169</div>	 <div>Ed Angelo D. Ramirez PROJECT MANAGER</div>	<div><div>Department of Science and Technology Philippine Nuclear Research Institute  Innovating Nuclear Medicine Research and Services: Development of Emerging PET Radiopharmaceuticals for Early Cancer Staging and Assessment of Biological Functions in Cancer Cells (C.Y. 2021) (Phase 2)  LOCATION: PNRI Compound, Commonwealth Avenue, Diliman, Quezon City</div></div>		REVIEWED BY:		CONCURRED BY:		RECOMMENDING APPROVAL:		APPROVED BY:	SHEET CONTENTS:  GROUND FLOOR PLAN	DESIGNED BY: E.C.G.R.	SHEET NO.				
		<div><div>Innovating Nuclear Medicine Research and Services: Development of Emerging PET Radiopharmaceuticals for Early Cancer Staging and Assessment of Biological Functions in Cancer Cells (C.Y. 2021) (Phase 2)  LOCATION: PNRI Compound, Commonwealth Avenue, Diliman, Quezon City</div></div>		<div>Engr. Rosalino B. Rejas SENIOR SCIENCE RESEARCH SPECIALIST</div>		<div>Engr. Arturo F. Salih SENIOR SCIENCE RESEARCH SPECIALIST</div>		<div>Engr. Andrew C. Barrida ENGINEER II</div>		<div>Engr. Renato T. Bañaga ESS HEAD</div>		<div>Adelina DM. Bulos END-USER/ ITS HEAD</div>	<div>Preciosa Corazon B. Pabroa, Ph. D. NSD CHIEF</div>	<div>Vallerie Ann I. Samson, Ph. D. OIC, DEPUTY DIRECTOR</div>	<div>Carlo A. Arcilla, Ph. D. DIRECTOR</div>	DESIGN DEV'T: E.C.G.R.	A - 2
						DRAWING PRODUCTION: E.C.G.R.											
						ACAD BY: AR. D.J.M.											
						CHECKED BY:											
PROJECT NUMBER:						PAGE NO. OF TOTAL NO. OF PAGES 2 OF 19											



WALL LEGENDS		
		150mm thk. CHB W/ 10mmØ DEF. REBAR @ 0.60 O.C. B.W.
		200mm thk. REINFORCED CONCRETE WALL (Phase 1)

1 MEZZANINE FLOOR PLAN  
A-3 SCALE 1:100m

 <div>E. A. RAMIREZ CONSTRUCTION, INC. DESIGNER DEVELOPER BUILDER Location : EARCEN Bldg., 31 Commonwealth Ave. Ext., Brgy. Sta. Monica, Quezon City 1117 Tels. : +63 9259169</div>	<div>Ed Angelo D. Ramirez PROJECT MANAGER</div>	<div>PROJECT TITLE: <div>Department of Science and Technology Philippine Nuclear Research Institute Innovating Nuclear Medicine Research and Services: Development of Emerging PET Radiopharmaceuticals for Early Cancer Staging and Assessment of Biological Functions in Cancer Cells (C.Y. 2021) (Phase 2) LOCATION: PNRI Compound, Commonwealth Avenue, Diliman, Quezon City</div></div>			<div>REVIEWED BY:</div> <div>Engr. Rosalino B. Rejas SENIOR SCIENCE RESEARCH SPECIALIST</div> <div>Engr. Arturo F. Salih SENIOR SCIENCE RESEARCH SPECIALIST</div> <div>Engr. Andrew C. Barrida ENGINEER II</div>			<div>CONCURRED BY:</div> <div>Engr. Renato T. Bañaga ESS HEAD</div> <div>Adelina DM. Bulos END-USER/ ITS HEAD</div>			<div>RECOMMENDING APPROVAL:</div> <div>Preciosa Corazon B. Pabroa, Ph. D. NSD CHIEF</div> <div>Vallerie Ann I. Samson, Ph. D. OIC, DEPUTY DIRECTOR</div> <div>Carlo A. Arcilla, Ph. D. DIRECTOR</div>			<div>APPROVED BY:</div>			<div>SHEET CONTENTS:</div> <div>MEZZANINE FLOOR PLAN</div>			<div>DESIGNED BY: E.C.G.R.</div> <div>DRAWING DEVT: E.C.G.R.</div> <div>DRAWING PRODUCTION: E.C.G.R.</div> <div>ACAD BY: AR. D.J.M.</div> <div>CHECKED BY:</div> <div>PROJECT NUMBER:</div>			<div>SHEET NO.</div> <div>A - 3</div> <div>PAGE NO. OF TOTAL NO. OF PAGES 3 OF 19</div>		



WALL LEGENDS		
		150mm thk. CHB W/ 10mmØ DEF. REBAR @ 0.60 O.C. B.W.
		200mm thk. REINFORCED CONCRETE WALL (Phase 1)

1  
A-4

SECOND FLOOR PLAN

SCALE 1:100m

**E. A. RAMIREZ CONSTRUCTION, INC.**  
DESIGNER DEVELOPER BUILDER  
Location : EARCON Bldg, 31 Commonwealth Ave. Ext., Brgy. Sta. Monica, Quezon City 1117  
Tels. : +63 9259189

**Ed Angelo D. Ramirez**  
PROJECT MANAGER

**PROJECT TITLE:**  
Department of Science and Technology  
Philippine Nuclear Research Institute  
  
Innovating Nuclear Medicine Research and Services:  
Development of Emerging PET Radiopharmaceuticals for  
Early Cancer Staging and Assessment of Biological  
Functions in Cancer Cells (C.Y. 2021) (Phase 2)  
LOCATION: PNRI Compound, Commonwealth Avenue, Diliman, Quezon City  
NOTE : THIS DRAWING IS AN INSTRUMENT OF PROFESSIONAL SERVICE IS THE PROPERTY OF THE ARCHITECT AND AS SUCH  
SHOULD NOT BE REPRODUCED OR COPIED IN WHOLE OR IN PART WITHOUT THE PERMISSION. ALL DRAWINGS ARE TO BE  
RETURNED WHEN NO LONGER IN USE. SEC. 32

**REVIEWED BY:**  
  
**Engr. Rosalino B. Rojas**  
SENIOR SCIENCE RESEARCH SPECIALIST

**Engr. Arturo F. Salih**  
SENIOR SCIENCE RESEARCH SPECIALIST

**Engr. Andrew C. Barrida**  
ENGINEER II

**Engr. Renato T. Bahaga**  
ESS HEAD

**Adelina DM. Bulos**  
ENR-USER/ ITS HEAD

**Preciosa Corazon B. Pabroa, Ph. D.**  
NSD CHIEF

**Vallerie Ann I. Samson, Ph. D.**  
OIC, DEPUTY DIRECTOR

**Carlo A. Arcilla, Ph. D.**  
DIRECTOR

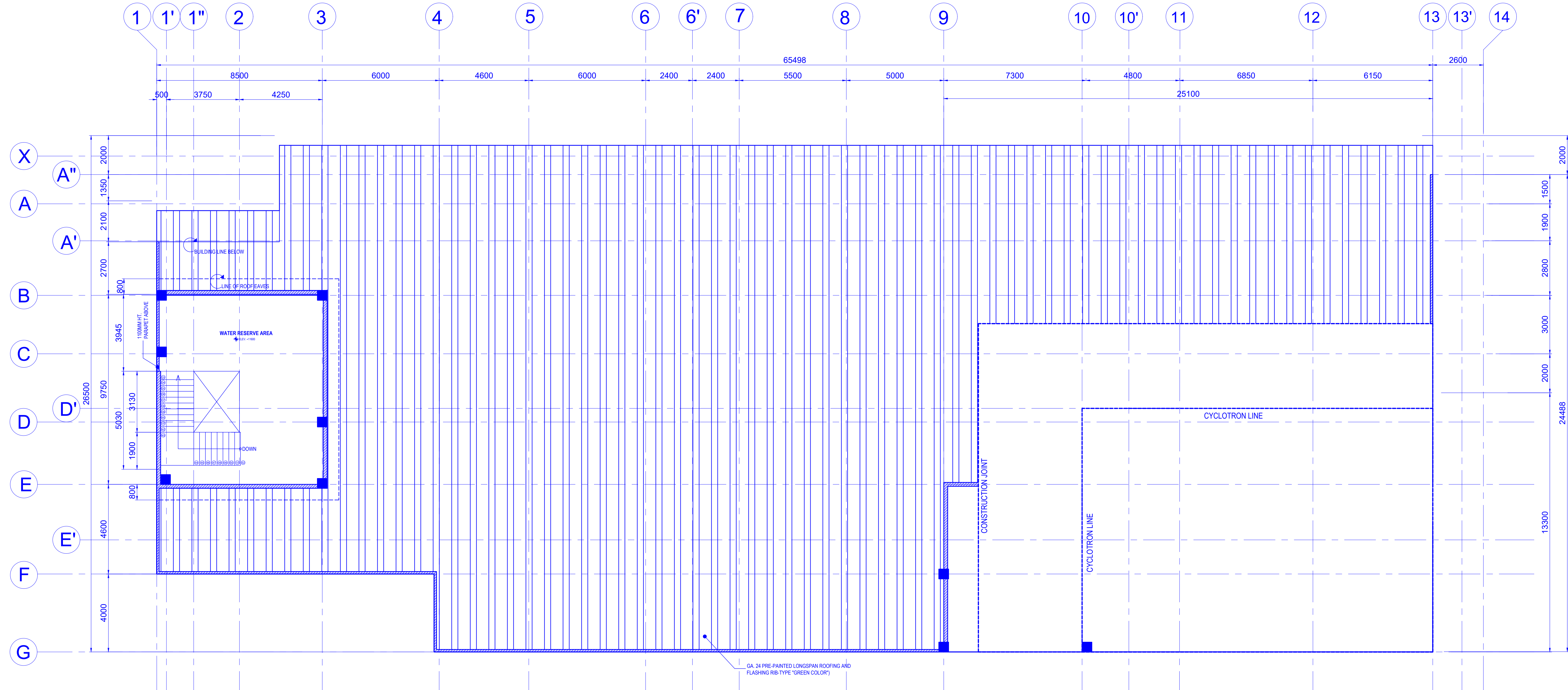
**SHEET CONTENTS:**  
SECOND FLOOR PLAN

**DESIGNED BY:** E.C.G.R.  
**DESIGN DEV'T:** E.C.G.R.  
**DRAWING PRODUCTION:** E.C.G.R.  
**ACAD BY:** AR, D.J.M.  
**CHECKED BY:**  
**PROJECT NUMBER:**

**SHEET NO.**

**A - 4**







**PAGE NO. OF TOTAL NO. OF PAGES**  
**4 OF 19**



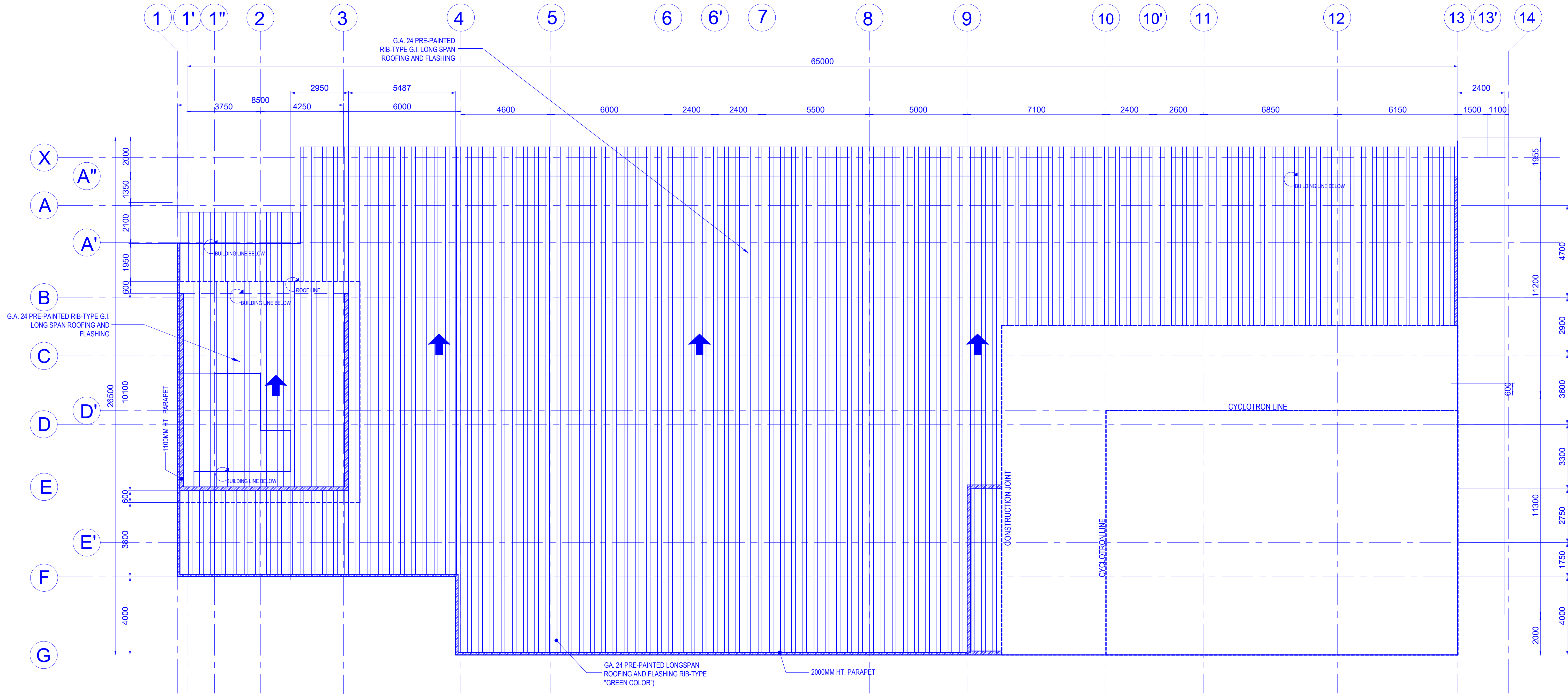
WALL LEGENDS		
		150mm thk. CHB W/ 10mmØ DEF. REBAR @ 0.60 O.C. B.W.
		200mm thk. REINFORCED CONCRETE WALL (Phase 1)

1  
A-5  
SCALE 1:100m

ROOF DECK PLAN

 <b>E. A. RAMIREZ CONSTRUCTION, INC.</b> DESIGNER DEVELOPER BUILDER Location : EARCEN Bldg, 31 Commonwealth Ave. Ext., Brgy. Sta. Monica, Quezon City 1117 Tels. : +63 9259189	<b>Ed Angelo D. Ramirez</b> PROJECT MANAGER	<b>PROJECT TITLE:</b>  Department of Science and Technology Philippine Nuclear Research Institute <b>Innovating Nuclear Medicine Research and Services: Development of Emerging PET Radiopharmaceuticals for Early Cancer Staging and Assessment of Biological Functions in Cancer Cells (C.Y. 2021) (Phase 2)</b> LOCATION: PNRI Compound, Commonwealth Avenue, Diliman, Quezon City		<b>REVIEWED BY:</b>		<b>CONCURRED BY:</b>		<b>RECOMMENDING APPROVAL:</b>		<b>APPROVED BY:</b>	<b>SHEET CONTENTS:</b>	<b>DESIGNED BY:</b> E.C.G.R.	<b>SHEET NO.</b>				
		 Innovating Nuclear Medicine Research and Services: Development of Emerging PET Radiopharmaceuticals for Early Cancer Staging and Assessment of Biological Functions in Cancer Cells (C.Y. 2021) (Phase 2) LOCATION: PNRI Compound, Commonwealth Avenue, Diliman, Quezon City		<b>Engr. Rosalino B. Rojas</b> SENIOR SCIENCE RESEARCH SPECIALIST		<b>Engr. Arturo F. Salih</b> SENIOR SCIENCE RESEARCH SPECIALIST		<b>Engr. Andrew C. Barrida</b> ENGINEER II		<b>Engr. Renato T. Bañaga</b> ESS HEAD	<b>Adelina DM. Bulos</b> END-USER/ ITS HEAD	<b>Preciosa Corazon B. Pabroa, Ph. D.</b> NSD CHIEF	<b>Vallerie Ann I. Samson, Ph. D.</b> OIC, DEPUTY DIRECTOR	<b>Carlo A. Arcilla, Ph. D.</b> DIRECTOR	<b>ROOF DECK PLAN</b>	<b>DESIGN DEVT:</b> E.C.G.R.	<b>A - 5</b>
		 Innovating Nuclear Medicine Research and Services: Development of Emerging PET Radiopharmaceuticals for Early Cancer Staging and Assessment of Biological Functions in Cancer Cells (C.Y. 2021) (Phase 2) LOCATION: PNRI Compound, Commonwealth Avenue, Diliman, Quezon City		<b>Engr. Rosalino B. Rojas</b> SENIOR SCIENCE RESEARCH SPECIALIST		<b>Engr. Arturo F. Salih</b> SENIOR SCIENCE RESEARCH SPECIALIST		<b>Engr. Andrew C. Barrida</b> ENGINEER II		<b>Engr. Renato T. Bañaga</b> ESS HEAD	<b>Adelina DM. Bulos</b> END-USER/ ITS HEAD	<b>Preciosa Corazon B. Pabroa, Ph. D.</b> NSD CHIEF	<b>Vallerie Ann I. Samson, Ph. D.</b> OIC, DEPUTY DIRECTOR	<b>Carlo A. Arcilla, Ph. D.</b> DIRECTOR	<b>ROOF DECK PLAN</b>	<b>DRAWING PRODUCTION:</b> E.C.G.R.	<b>PAGE NO. OF TOTAL NO. OF PAGES</b>
		 Innovating Nuclear Medicine Research and Services: Development of Emerging PET Radiopharmaceuticals for Early Cancer Staging and Assessment of Biological Functions in Cancer Cells (C.Y. 2021) (Phase 2) LOCATION: PNRI Compound, Commonwealth Avenue, Diliman, Quezon City		<b>Engr. Rosalino B. Rojas</b> SENIOR SCIENCE RESEARCH SPECIALIST		<b>Engr. Arturo F. Salih</b> SENIOR SCIENCE RESEARCH SPECIALIST		<b>Engr. Andrew C. Barrida</b> ENGINEER II		<b>Engr. Renato T. Bañaga</b> ESS HEAD	<b>Adelina DM. Bulos</b> END-USER/ ITS HEAD	<b>Preciosa Corazon B. Pabroa, Ph. D.</b> NSD CHIEF	<b>Vallerie Ann I. Samson, Ph. D.</b> OIC, DEPUTY DIRECTOR	<b>Carlo A. Arcilla, Ph. D.</b> DIRECTOR	<b>ROOF DECK PLAN</b>	<b>ACAD BY:</b> AR, D.J.M.	<b>5 OF 19</b>
		 Innovating Nuclear Medicine Research and Services: Development of Emerging PET Radiopharmaceuticals for Early Cancer Staging and Assessment of Biological Functions in Cancer Cells (C.Y. 2021) (Phase 2) LOCATION: PNRI Compound, Commonwealth Avenue, Diliman, Quezon City		<b>Engr. Rosalino B. Rojas</b> SENIOR SCIENCE RESEARCH SPECIALIST		<b>Engr. Arturo F. Salih</b> SENIOR SCIENCE RESEARCH SPECIALIST		<b>Engr. Andrew C. Barrida</b> ENGINEER II		<b>Engr. Renato T. Bañaga</b> ESS HEAD	<b>Adelina DM. Bulos</b> END-USER/ ITS HEAD	<b>Preciosa Corazon B. Pabroa, Ph. D.</b> NSD CHIEF	<b>Vallerie Ann I. Samson, Ph. D.</b> OIC, DEPUTY DIRECTOR	<b>Carlo A. Arcilla, Ph. D.</b> DIRECTOR	<b>ROOF DECK PLAN</b>	<b>CHECKED BY:</b>	<b>5 OF 19</b>





WALL LEGENDS		
		150mm thk. CHB W/ 10mmØ DEF. REBAR @ 0.60 O.C. B.W.
		200mm thk. REINFORCED CONCRETE WALL (Phase 1)

1  
A-6

ROOF PLAN

SCALE 1:100m

**E. A. RAMIREZ CONSTRUCTION, INC.**  
DESIGNER DEVELOPER BUILDER  
Location : EARCON Bldg, 31 Commonwealth Ave. Ext., Brgy. Sta. Monica, Quezon City 1117  
Tels. : +63 9259189

**Ed Angelo D. Ramirez**  
PROJECT MANAGER

**PROJECT TITLE:**  
Department of Science and Technology  
Philippine Nuclear Research Institute  
  
Innovating Nuclear Medicine Research and Services:  
Development of Emerging PET Radiopharmaceuticals for  
Early Cancer Staging and Assessment of Biological  
Functions in Cancer Cells (G.Y. 2021) (Phase 2)  
LOCATION: PNRI Compound, Commonwealth Avenue, Diliman, Quezon City  
NOTE: THIS DRAWING IS AN INSTRUMENT OF PROFESSIONAL SERVICE IS THE PROPERTY OF THE ARCHITECT AND AS SUCH  
MUST NOT BE REPRODUCED OR COPIED IN WHOLE OR IN PART WITHOUT HIS PERMISSION. ALL DRAWINGS ARE TO BE  
RETURNED WHEN NO LONGER IN USE. SEC. 32

**Engr. Rosalino B. Rojas**  
SENIOR SCIENCE RESEARCH SPECIALIST

**Engr. Arturo F. Salih**  
SENIOR SCIENCE RESEARCH SPECIALIST

**Engr. Andrew C. Barrida**  
ENGINEER II

**Engr. Renato T. Bahaga**  
ESS HEAD

**Adelina DM. Bulos**  
END-USER/ ITS HEAD

**Preciosa Corazon B. Pabroa, Ph. D.**  
NSO CHIEF

**Vallerie Ann I. Samson, Ph. D.**  
OIC, DEPUTY DIRECTOR

**Carlo A. Arcilla, Ph. D.**  
DIRECTOR

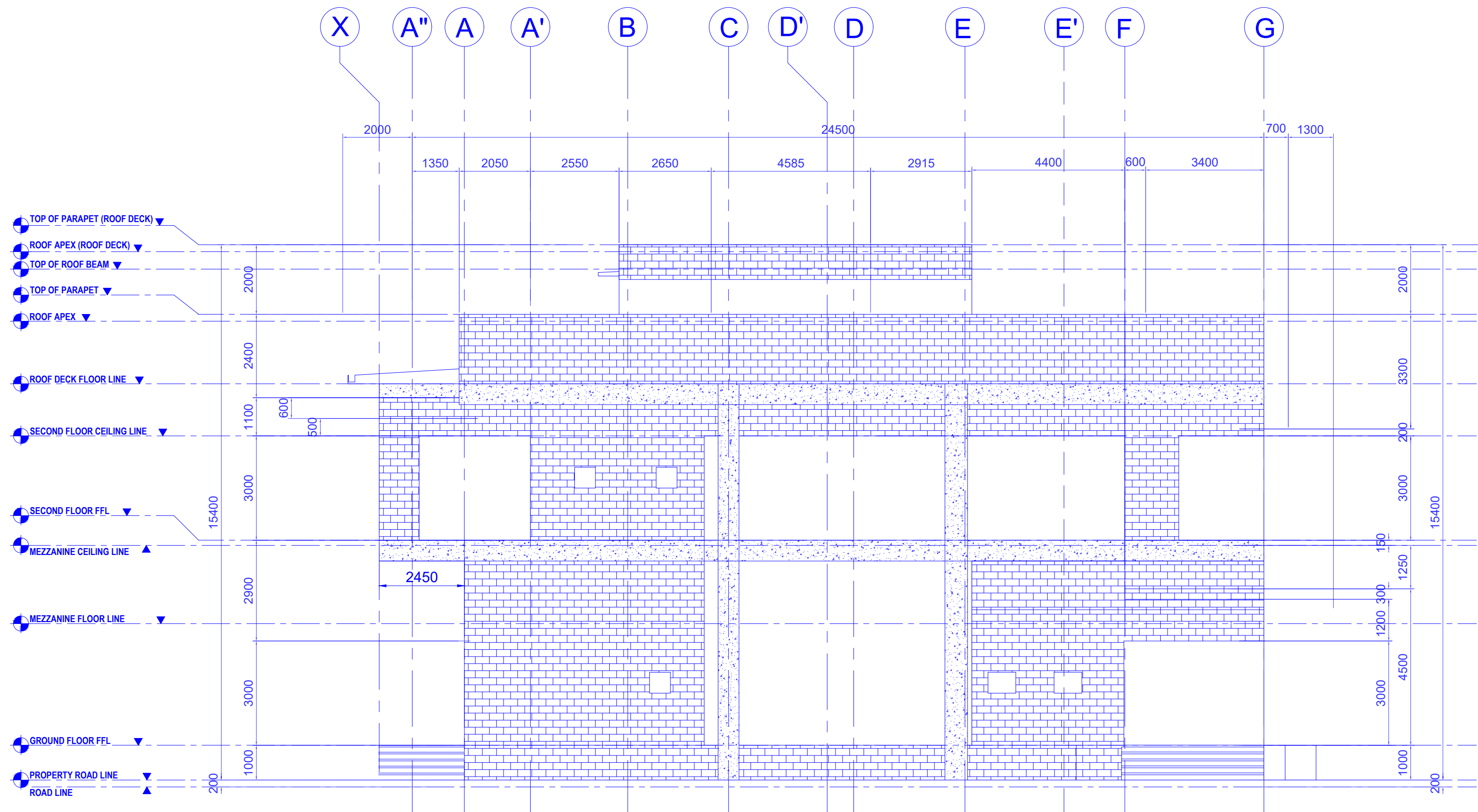
**SHEET CONTENTS:**  
ROOF PLAN

**DESIGNED BY:** E.C.G.R.  
**DESIGN DEV'T:** E.C.G.R.  
**DRAWING PRODUCTION:** E.C.G.R.  
**ACAD BY:** AR, D.J.M.  
**CHECKED BY:**  
**PROJECT NUMBER:**

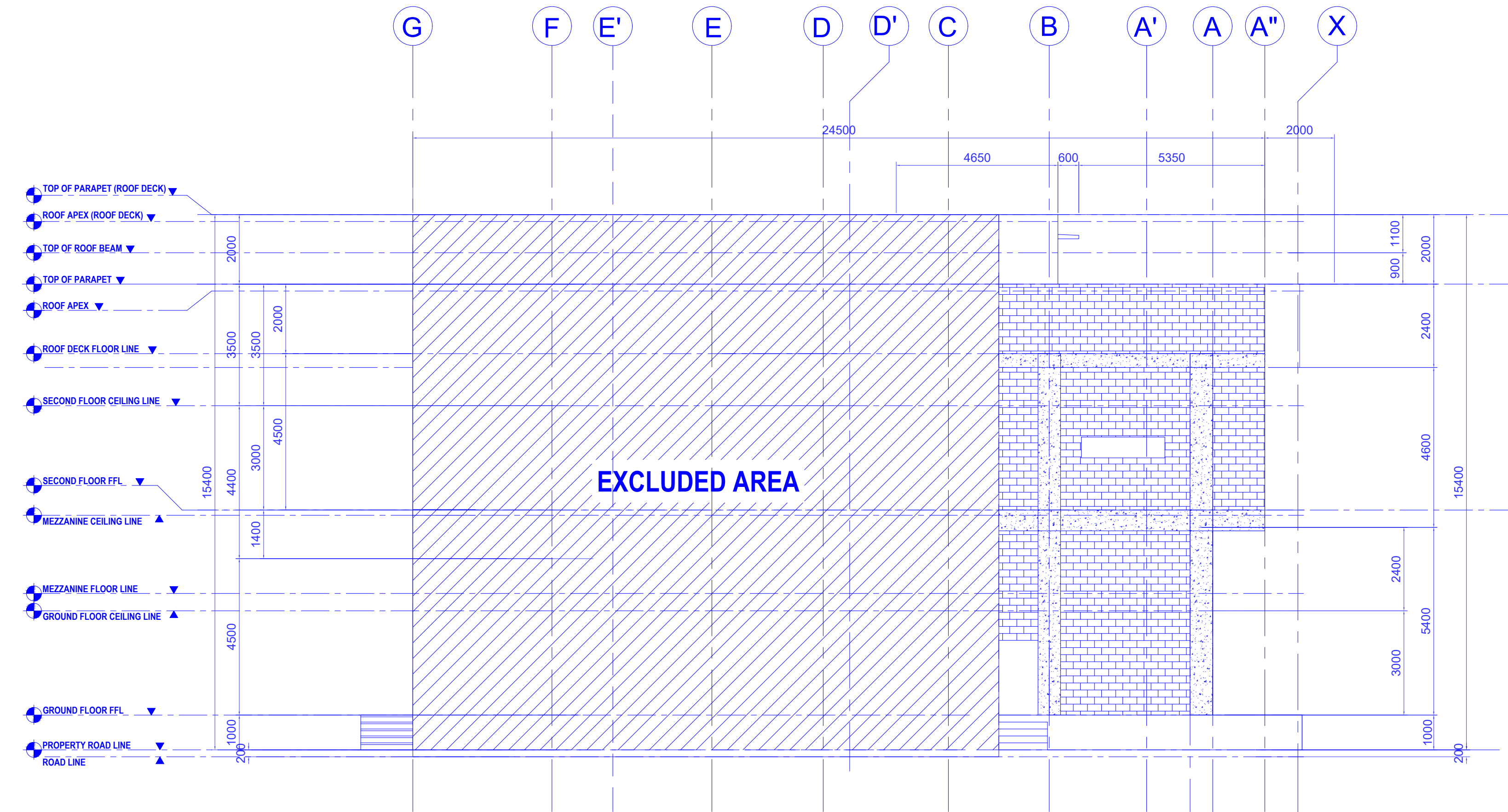
**SHEET NO.**

**A - 6**

**PAGE NO. OF TOTAL NO. OF PAGES**  
**6 OF 19**



1 LEFT SIDE ELEVATION  
A - 7 SCALE 1:100m



2 RIGHT SIDE ELEVATION  
A - 7 SCALE 1:100m

#### HATCH LEGENDS

	150mm thk. CHB W/ 10mm@ DEF. REBAR @ 0.60 O.C. B.W.
	REINFORCED CONCRETE COLUMN & BEAM (Phase 1)
	GA 24 PRE-PAINTED RIB-TYPE G.I. LONG SPAN ROOFING

**E. A. RAMIREZ CONSTRUCTION, INC.**  
DESIGNER DEVELOPER BUILDER  
Location : EARCON Bldg., 31 Commonwealth Ave. Ext., Brgy. Sta. Monica, Quezon City 1117  
Tels. +63 9259169

**Ed Angelo D. Ramirez**  
PROJECT MANAGER

**PROJECT TITLE:**  
Department of Science and Technology  
Philippine Nuclear Research Institute  
Innovating Nuclear Medicine Research and Services:  
Development of Emerging PET Radiopharmaceuticals for  
Early Cancer Staging and Assessment of Biological  
Functions in Cancer Cells (C.Y. 2021) (Phase 2)  
LOCATION: PNRI Compound, Commonwealth Avenue, Diliman, Quezon City  
NOTE: THIS DRAWING IS AN INSTRUMENT OF PROFESSIONAL SERVICE IS THE PROPERTY OF THE ARCHITECT AND AS SUCH  
SHOULD NOT BE REPRODUCED OR COPIED IN WHOLE OR IN PART WITHOUT HIS PERMISSION. ALL DRAWINGS ARE TO BE  
RETURNED WHEN NO LONGER IN USE. SEC. 31

**REVIEWED BY:**  
Engr. Rosalino B. Rojas  
SENIOR SCIENCE RESEARCH SPECIALIST

Engr. Arturo F. Salih  
SENIOR SCIENCE RESEARCH SPECIALIST

Engr. Andrew C. Barrida  
ENGINEER II

Engr. Renato T. Bañaga  
ESS HEAD

Adelina DM. Bulos  
END-USER/ ITS HEAD

**RECOMMENDING APPROVAL:**  
Preciosa Corazon B. Pabroa, Ph. D.  
NSD CHIEF

Vallerie Ann I. Samson, Ph. D.  
OIC, DEPUTY DIRECTOR

**APPROVED BY:**  
Carlo A. Arcilla, Ph. D.  
DIRECTOR

**SHEET CONTENTS:**  
RIGHT SIDE ELEVATION  
LEFT SIDE ELEVATION

**DESIGNED BY:** E.C.G.R.  
**DESIGN DEVT:** E.C.G.R.  
**DRAWING PRODUCTION:** E.C.G.R.  
**ACAD BY:** AR. D.J.M.  
**CHECKED BY:**  
**PROJECT NUMBER:**

**SHEET NO.**  
**A - 7**  
**PAGE NO. OF TOTAL NO. OF PAGES**  
**7 OF 19**



