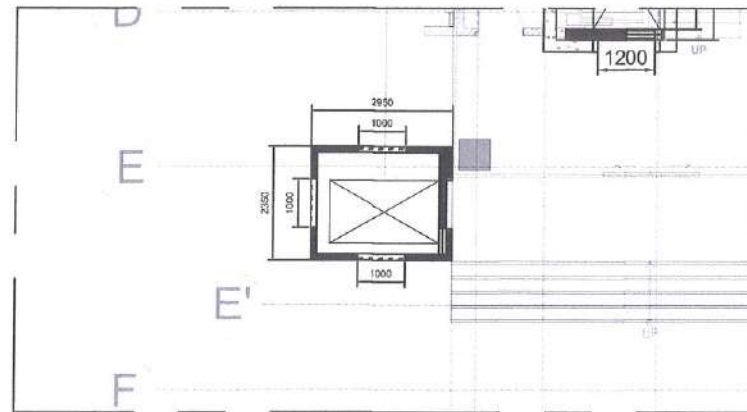
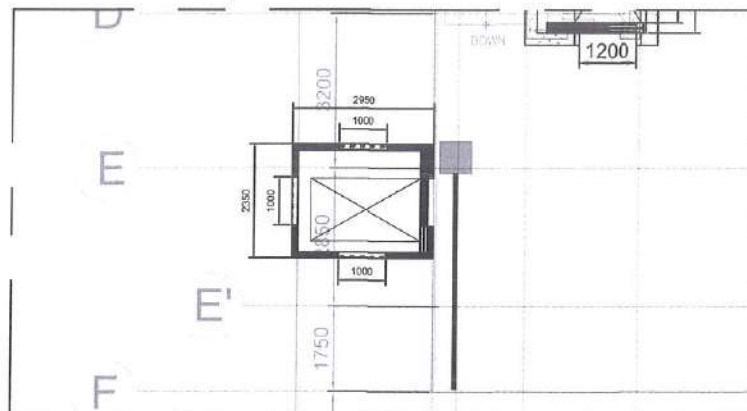


01 NUCMED 1000KG HBE
LOCATION PLAN
SCALE: NTS



02 NUCMED 1000KG HBE
GF BLOW UP PLAN
SCALE: 1:150MM



03 NUCMED 1000KG HBE
2F BLOW UP PLAN
SCALE: 1:150MM

HORIZONTAL

DESIGNATION	NO. OF PASSENGER	RATED CAPACITY	RATED SPEED	DOOR TYPE	COUNTER WEIGHT	CABIN INTERNAL DIMENSION	CABIN DOOR DIMENSION	MINIMUM HOISTWAY DIMENSION	MACHINE ROOM
HOSPITAL BED ELEVATOR	-	1000 KG	1.0 m/s	SIDE OPENING	-	1300 x 2300 x 2300	1000 x 2100	2100 x 2700	Roomless

VERTICAL

DESIGNATION	NO. OF STOP	MIN. OVERHEAD	MIN. PIT DEPTH	LANDING DOOR	MIN. FLOOR TO FLOOR HEIGHT	MOTOR	CONTROL	POWER
HOSPITAL BED ELEVATOR	2	-	1500 MM	-	5900 MM	TRACTION TYPE / GEARLESS	VVVF	400V / 3PH / 60HZ

PROJECT TITLE: 1000KG HOSPITAL BED ELEVATOR



Department of Science and Technology
Philippine Nuclear Research Institute
"DESIGN PREPARATION, SUPPLY, DELIVERY, INSTALLATION, TESTING & COMMISSIONING AND TECHNICAL SUPERVISION OF BRAND-NEW SET OF 1 UNIT OF 1000KGS CAPACITY - HOSPITAL BED ELEVATOR FOR THE NUCLEAR MEDICINE RESEARCH AND INNOVATION CENTER (NMRIC) LOCATED AT THE DEPARTMENT OF SCIENCE AND TECHNOLOGY - PHILIPPINE NUCLEAR RESEARCH INSTITUTE (DOST-PNRI) COMPOUND"

NOTE: THIS DRAWING AS AN INSTRUMENT OF PROFESSIONAL SERVICE IS THE PROPERTY OF THE ARCHITECT AND AS SUCH MUST NOT BE REPRODUCED OR COPIED IN WHOLE OR IN PART WITHOUT HIS PERMISSION. ALL DRAWINGS ARE TO BE RETURNED WHEN NO LONGER IN USE. SEC. 33

SHEET CONTENTS:

LOCATION PLAN
GF BLOW UP PLAN
2F BLOW UP PLAN
CABIN SPECIFICATION
ELEVATION
PERSPECTIVE VIEW

Prepared by: BENEDICT O. DE LARA
PTA-I

REVIEWED & RECOMMENDED BY:

Engr. Andrew C. Barrida
SENIOR SCIENCE RESEARCH SPECIALIST
(Mechanical Works)
Engr. Rosalino B. Rojas
SENIOR SCIENCE RESEARCH SPECIALIST
(Civil Works)

CONCURRED BY:

Engr. Rolito B. Ilao
ENGINEER II
(Auxiliary Works)
Engr. Arturo F. Salih
ESS HEAD

RECOMMENDING APPROVAL:

Maria Teresa L. Borras
END-USER / ITS HEAD

APPROVED BY:

Preciosa Corazon B. Pabroa, Ph. D.
NSD CHIEF
Vallerie Ann I. Samson, Ph. D.
DEPUTY DIRECTOR

APPROVED BY:

Carlo A. Arcilla, Ph. D.
DIRECTOR

SHEET NO.

M
1 2

ROOFING DESIGN
PROVIDE BY CONTRACTOR FOR APPROVAL

AIR LOUVER
FOR VENTILATION:
size varies actual

CEILING:
Hairline Stainless Steel Finish
w/ Led and Emergency Lights
w/
battery and charger
and Ventilation Fan

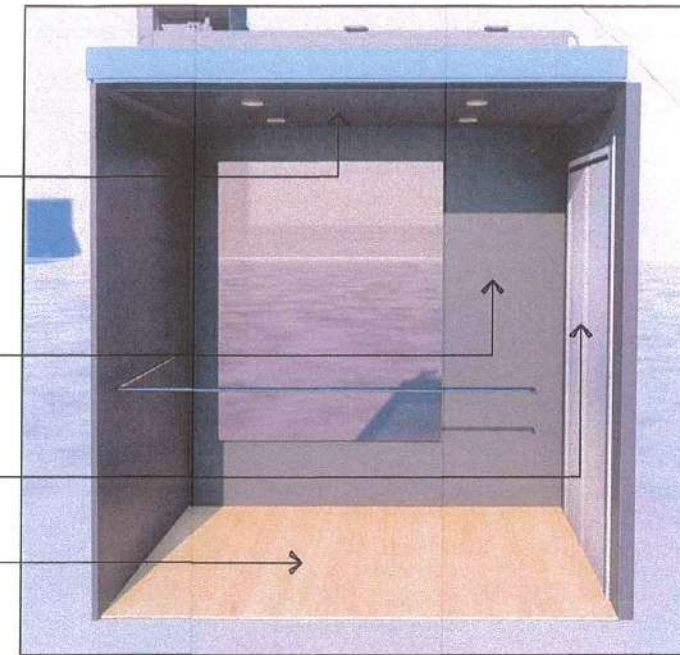
WALLS:
Hairline Stainless Steel Finish
w/ Fixed Window Facing
TechnoHub
Size : Varies Actual

CABIN DOOR:
Stainless Steel Finish

FLOOR FINISH:
Luxury Vinyl Floor Finish

NOTE:
EMERGENCY AND SAFETY
FEATURES TO BE INCLUDED

1. Overspeed Governor
2. Emergency Brakes
3. Door safety alarm
4. Emergency Communication
5. Overload Sensor
6. Emergency for Power Failure
7. Fire Fighter service.
8. Security System (w/ CCTV)
9. Intercom
10. Ventilation Fan



04 NUCMED 1000KG HBE
CABIN SPECIFICATION
SCALE: NTS

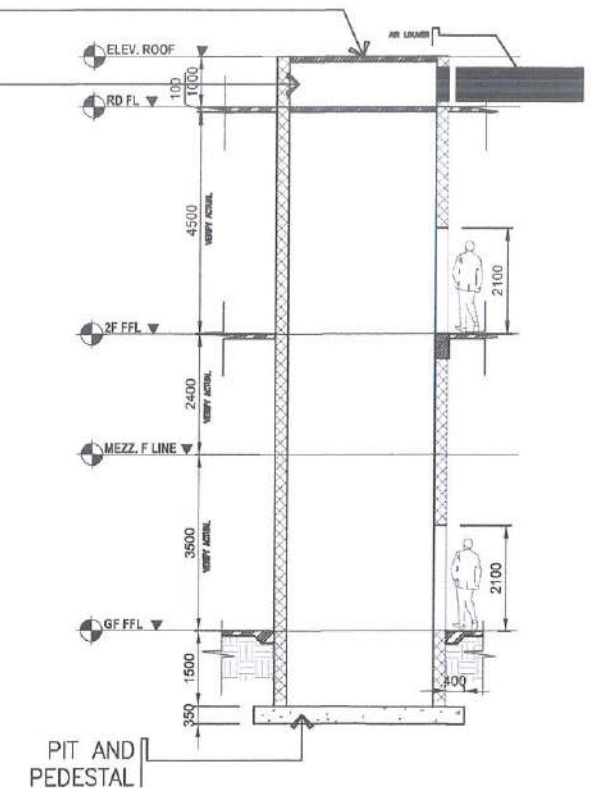
HOISTWAY ENCLOSURE:
4mm Aluminum Cladding
w/ 12mm Tempered Glass

STRUCTURAL SUPPORT
(I-BEAM)

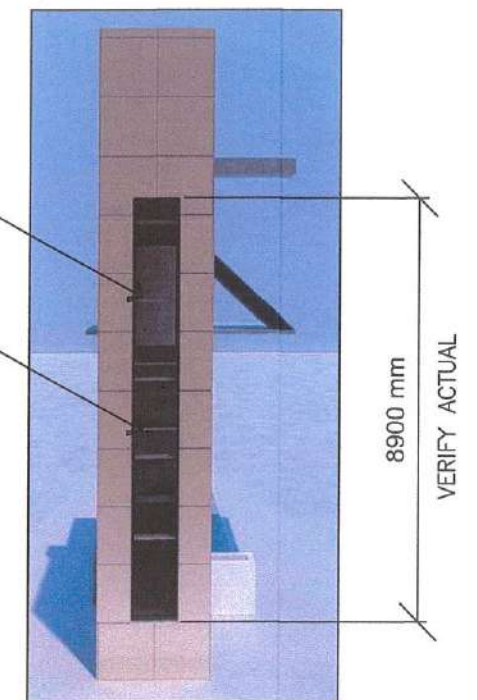
NOTE: INCLUDED

IN CONTRACTOR'S OR INSTALLER SCOPE:

1. DESIGN, MANUFACTURING, SHIPPING, SITE DELIVERY, INSTALLATION INCLUDING TESTING & COMMISSIONING
2. PIT EXCAVATION AND CONSTRUCTION OF PEDESTAL
4. CONSTRUCTION OF STRUCTURAL POST / HOISTWAY FRAME
5. INSTALLATION OF CLADDING - 4MM ALUMINUM CLADDING W/ 12MM TEMPERED GLASS
6. CHIPPING AND DEMOLITION
7. REPAIR AND RESTORATION
8. RENTAL OF GENERATOR FOR COMMISSIONING AND TESTING

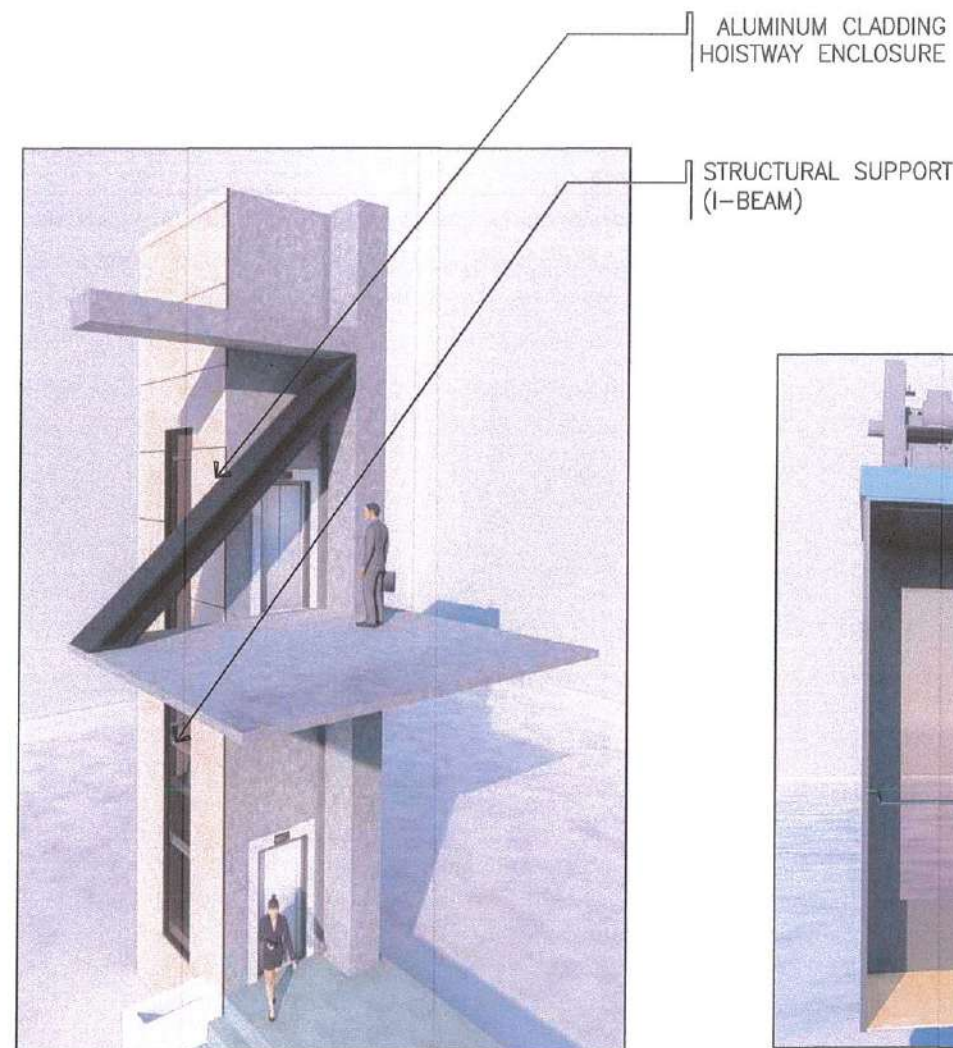


05 NUCMED 1000KG HBE
ELEVATION
SCALE: NTS

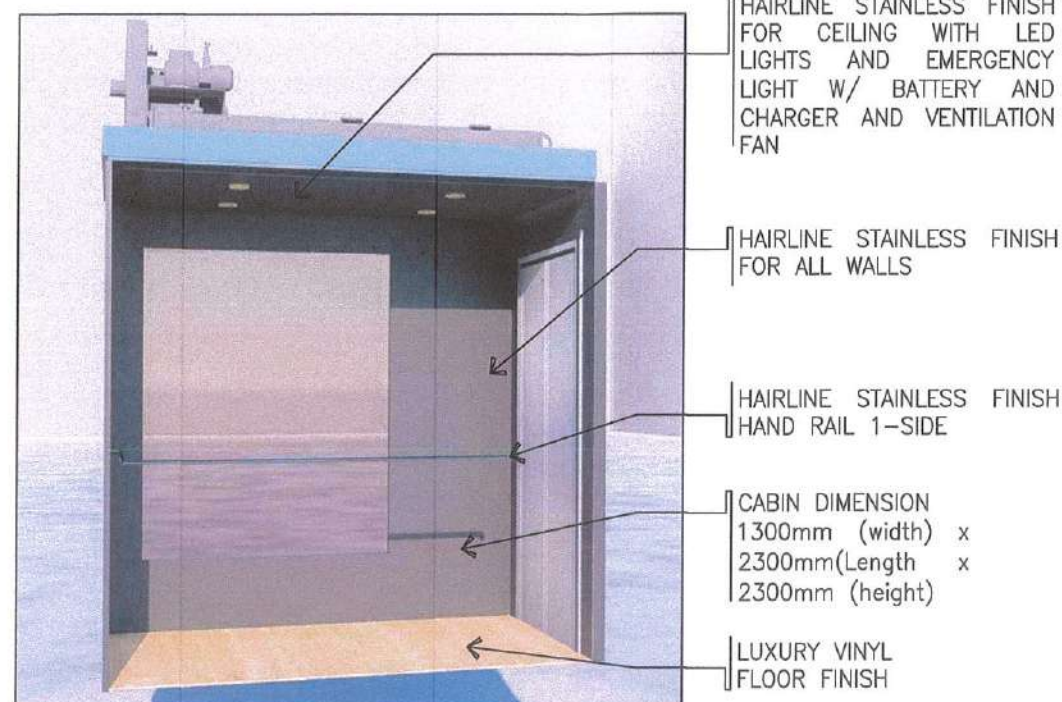


06 NUCMED 1000KG HBE
PERSPECTIVE VIEW
SCALE: NTS

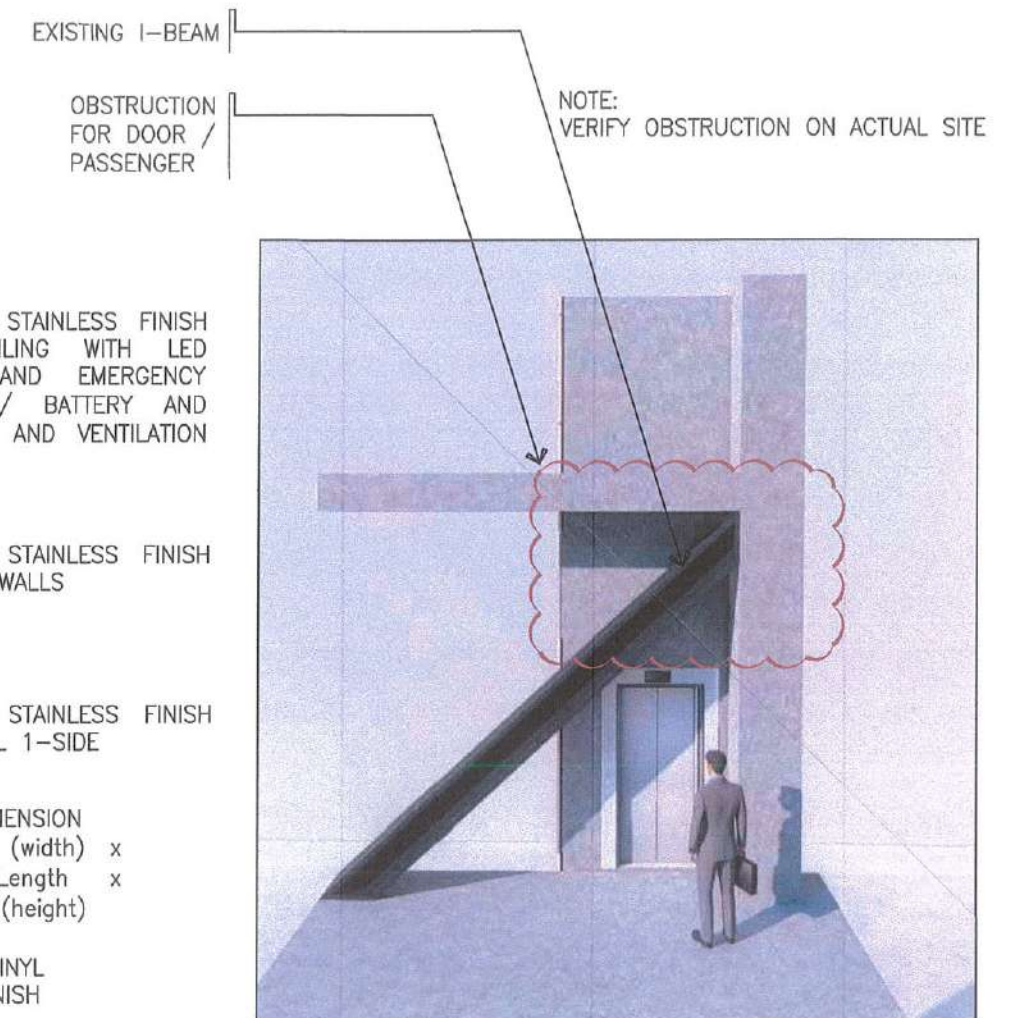
GENERAL NOTE: DO NOT SCALE FROM DRAWING. USE IMPLIED DIMENSIONS. VERIFY ACTUAL MEASUREMENTS. INFORM DESIGN TEAM OF ANY DISCREPANCIES FOUND IN DRAWINGS, DOCUMENTS, AND ACTUAL SITE CONDITIONS.



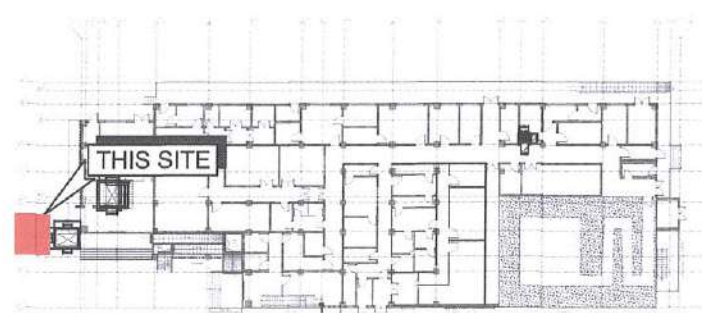
01 NUCMED EMERGENCY ELEVATOR
FRONT VIEW
SCALE: M-2/M-2 NTS



02 NUCMED EMERGENCY ELEVATOR
ELEVATOR CABIN - PERSPECTIVE VIEW
SCALE: M-2/M-2 NTS



03 NUCMED EMERGENCY ELEVATOR
FRONT VIEW
SCALE: M-2/M-2 NTS



04 NUCMED EMERGENCY ELEVATOR
GF LOCATION PLAN
SCALE: M-2/M-2 NTS



05 NUCMED EMERGENCY ELEVATOR
2F LOCATION PLAN
SCALE: M-2/M-2 NTS

PROJECT TITLE: 1000KG HOSPITAL BED ELEVATOR



Department of Science and Technology
Philippine Nuclear Research Institute
"DESIGN PREPARATION, SUPPLY, DELIVERY, INSTALLATION, TESTING & COMMISSIONING AND TECHNICAL SUPERVISION OF BRAND-NEW SET OF 1 UNIT OF 1000KGS CAPACITY - HOSPITAL BED ELEVATOR FOR THE NUCLEAR MEDICINE RESEARCH AND INNOVATION CENTER (NMRIC) LOCATED AT THE DEPARTMENT OF SCIENCE AND TECHNOLOGY - PHILIPPINE NUCLEAR RESEARCH INSTITUTE (DOST-PNRI) COMPOUND"

NOTE: THIS DRAWING AS AN INSTRUMENT OF PROFESSIONAL SERVICE IS THE PROPERTY OF THE ARCHITECT AND AS SUCH MUST NOT BE REPRODUCED OR COPIED IN WHOLE OR IN PART WITHOUT HIS PERMISSION. ALL DRAWINGS ARE TO BE RETURNED WHEN NO LONGER IN USE. SEC. 33

SHEET CONTENTS:

FRONT VIEW
ELEVATOR CABIN - PERSPECTIVE VIEW
FRONT VIEW
GF LOCATION PLAN
2F LOCATION PLAN

Prepared by: BENEDICT S. DE LARA
PTA-1

REVIEWED & RECOMMENDED BY:

Engr. Andrew C. Barrida
SENIOR SCIENCE RESEARCH SPECIALIST
(Mechanical Works)
Engr. Rosaline B. Rojas
SENIOR SCIENCE RESEARCH SPECIALIST
(Civil Works)

CONCURRED BY:

Engr. Rellie B. Ilao
ENGINEER II
(Auxiliary Works)
Engr. Arturo F. Salih
ESS HEAD

RECOMMENDING APPROVAL:

Maria Teresa L. Borras
END-USER / ITS HEAD

APPROVED BY:

Preciosa Gonzon B. Pabroa, Ph. D.
INDS CHIEF
Vallerie Ann I. Samson, Ph. D.
DEPUTY DIRECTOR

SHEET NO.

Carlo A. Arcilla, Ph. D.
DIRECTOR

SHEET NO.

M
2 2