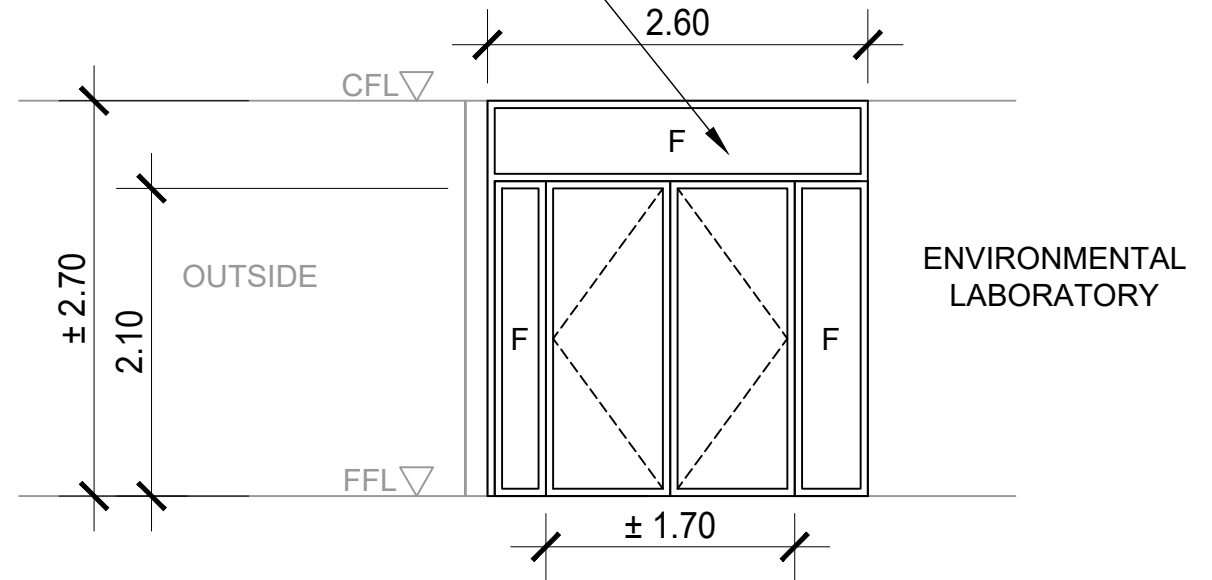


TOP VIEW


SUPPLY AND INSTALLATION OF 6MM THK. GLASS AND 50MM THK ALUMINUM PRE-PAINTED FRAME WITH SWING DOOR (4.10M (L) X 2.70M (H)) WITH COMPLETE LOCKSET AND ACCESSORIES



FRONT VIEW

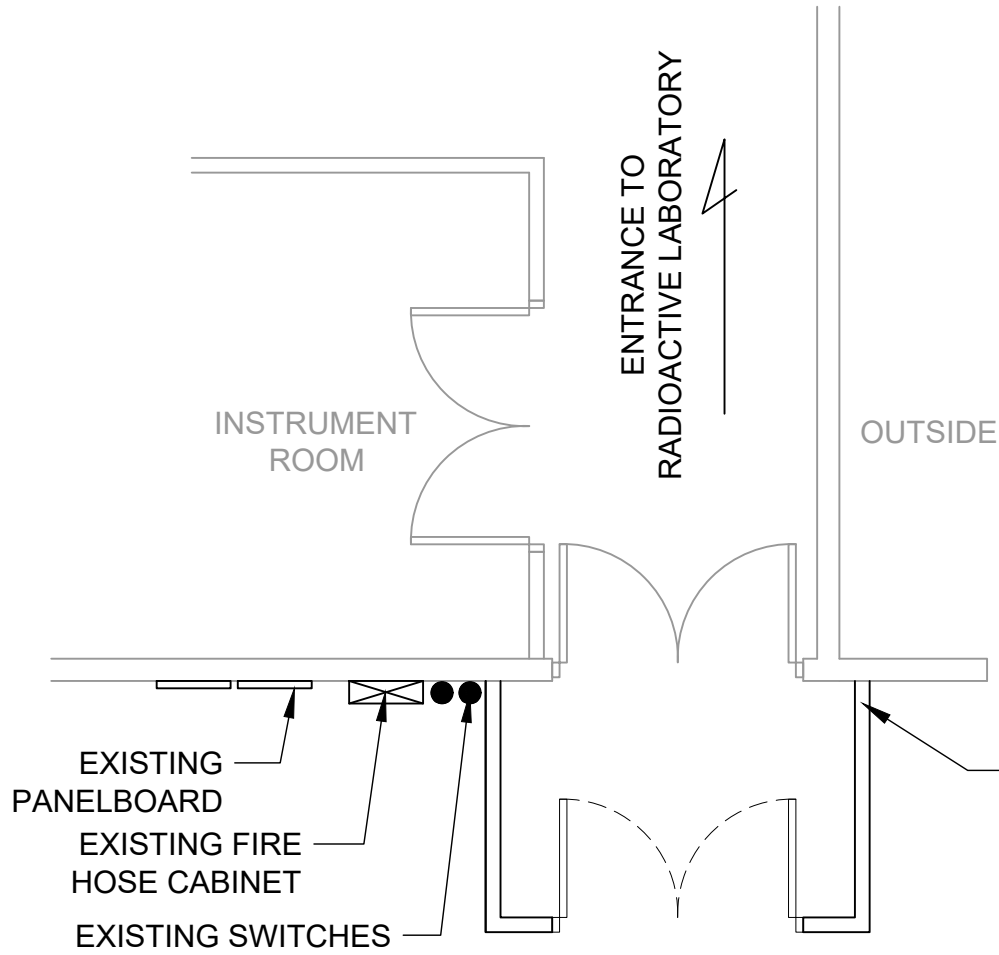
HPRS

1
A - 45
ENVILAB
PROPOSED ANTE ROOM #1
SCALE
NTS

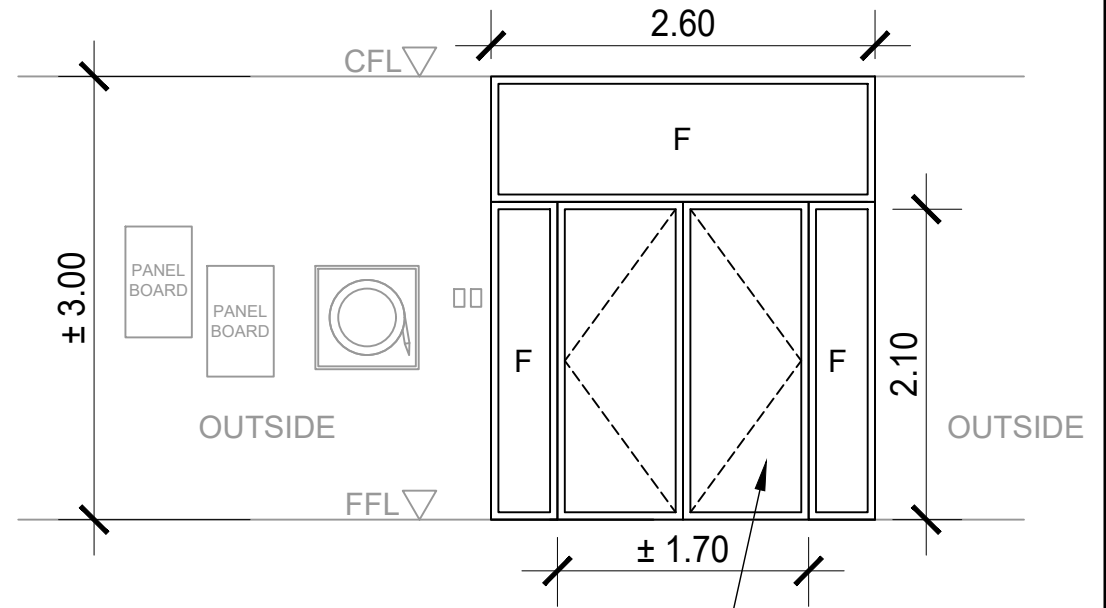
 Republic of the Philippines DEPARTMENT OF SCIENCE AND TECHNOLOGY PHILIPPINE NUCLEAR RESEARCH INSTITUTE COMMONWEALTH AVENUE, DILIMAN, QUEZON CITY	PROJECT TITLE:	SHEET CONTENT/S:	PREPARED BY:	RECOMMENDING APPROVALS:	APPROVED BY:	DRAWN BY:	SHEET NO.
	UPGRADING OF ARC BUILDING (C.Y. 2025)	ENVILAB - PROPOSED ANTE ROOM #1	ENGR. ANDREW C. BARRIDA <small>SSRS, ESS</small> ENGR. ROSALINO B. REJAS <small>SSRS, ESS</small>	ENGR. ARTURO F. SALIH <small>ESS, HEAD</small> NEIL RAYMUND D. GUILLERMO, M. Sc <small>CHIEF, ARD</small> ENGR. HAYDEE M. SOLOMON <small>OIC-CHIEF, NSD</small>	CHITHO P. FELICIANO, Ph.D. <small>END-USER, HEAD, HPRS</small> VALLERIE ANN I. SAMSON, Ph. D. <small>DEPUTY DIRECTOR</small>	CARLO A. ARCILLA, Ph. D. <small>DIRECTOR</small>	ENGR. C. PELMONTE

GENERAL NOTE: DRAWINGS MAY NOT BE IN SCALE. USE MARKED DIMENSIONS. VERIFY ACTUAL MEASUREMENTS. INFORM THE DESIGN TEAM OF ANY DISCREPANCIES FOUND IN THE DRAWINGS, DOCUMENTS, AND ACTUAL SITE CONDITIONS.

TOP VIEW




FRONT VIEW

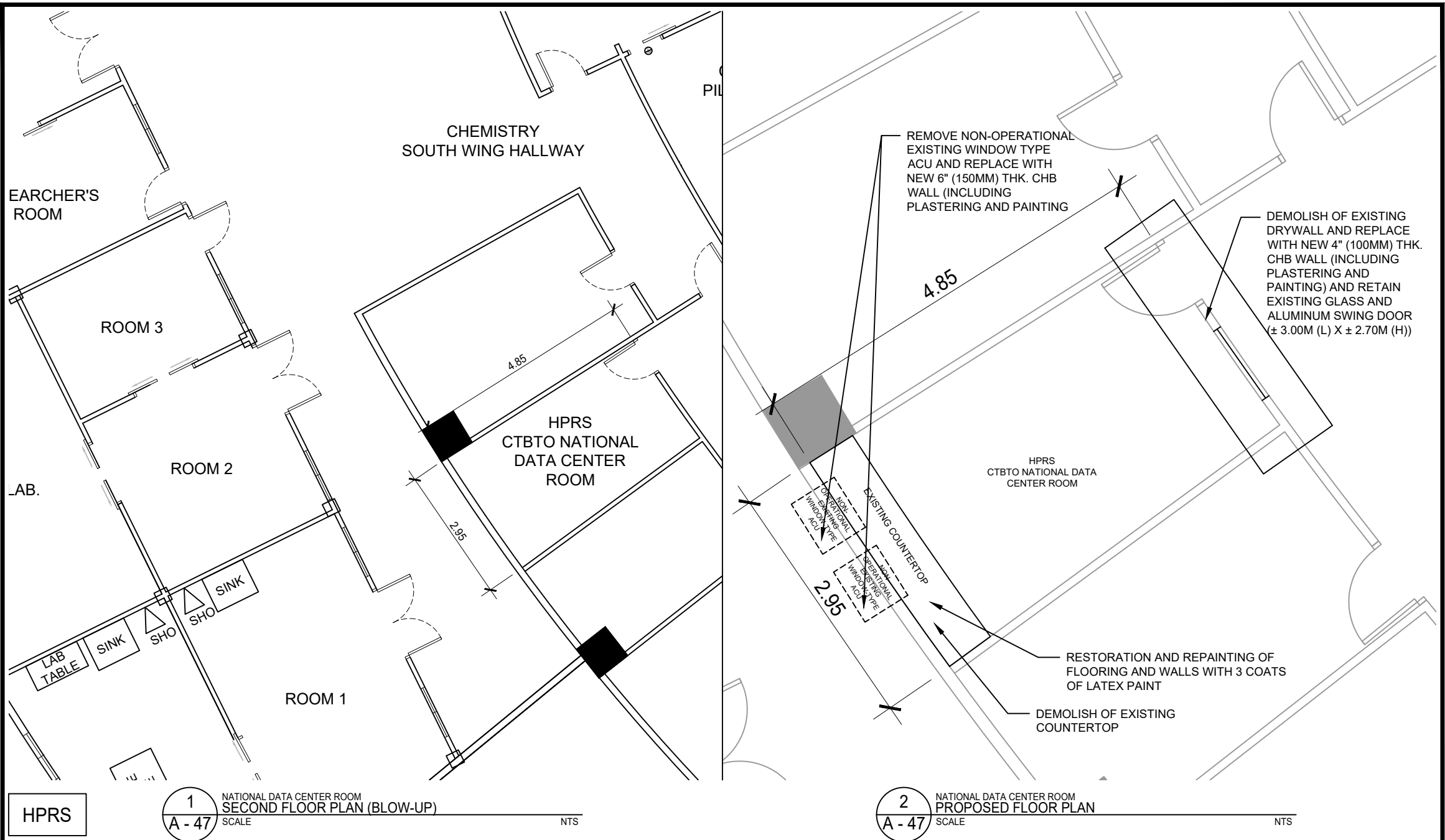


HPRS

1 ENVILAB
 PROPOSED ANTE ROOM #2
 A - 46 SCALE NTS

 <p style="font-size: 8px;">Republic of the Philippines DEPARTMENT OF SCIENCE AND TECHNOLOGY PHILIPPINE NUCLEAR RESEARCH INSTITUTE COMMONWEALTH AVENUE, DILIMAN, QUEZON CITY</p>	PROJECT TITLE:	SHEET CONTENT/S:	PREPARED BY:	RECOMMENDING APPROVALS:	APPROVED BY:	DRAWN BY:	SHEET NO.	
	UPGRADING OF ARC BUILDING (C.Y. 2025)	ENVILAB - SCHEDULE OF STAINLESS STEEL TABLES (2 OF 2)	ENGR. ANDREW C. BARRIDA <small>SSRS, ESS</small> ENGR. ROSALINO B. REJAS <small>SSRS, ESS</small>	ENGR. ARTURO F. SALIH <small>ESS, HEAD</small> CHITHO P. FELICIANO, Ph.D. <small>END-USER, HEAD, HPRS</small> NEIL RAYMUND D. GUILLERMO, M. Sc <small>CHIEF, ARD</small> ENGR. HAYDEE M. SOLOMON <small>OTC-CHIEF, NSD</small> VALLERIE ANN I. SAMSON, Ph. D. <small>DEPUTY DIRECTOR</small>	CARLO A. ARCILLA, Ph. D. <small>DIRECTOR</small>	ENGR. C. PELMONTE	A - 46	
							CHECKED BY:	PAGE NO. OF TOTAL NO. OF PAGES
							DATE:	46 of 84

GENERAL NOTE: DRAWINGS MAY NOT BE IN SCALE. USE MARKED DIMENSIONS. VERIFY ACTUAL MEASUREMENTS. INFORM THE DESIGN TEAM OF ANY DISCREPANCIES FOUND IN THE DRAWINGS, DOCUMENTS, AND ACTUAL SITE CONDITIONS.



HPRS

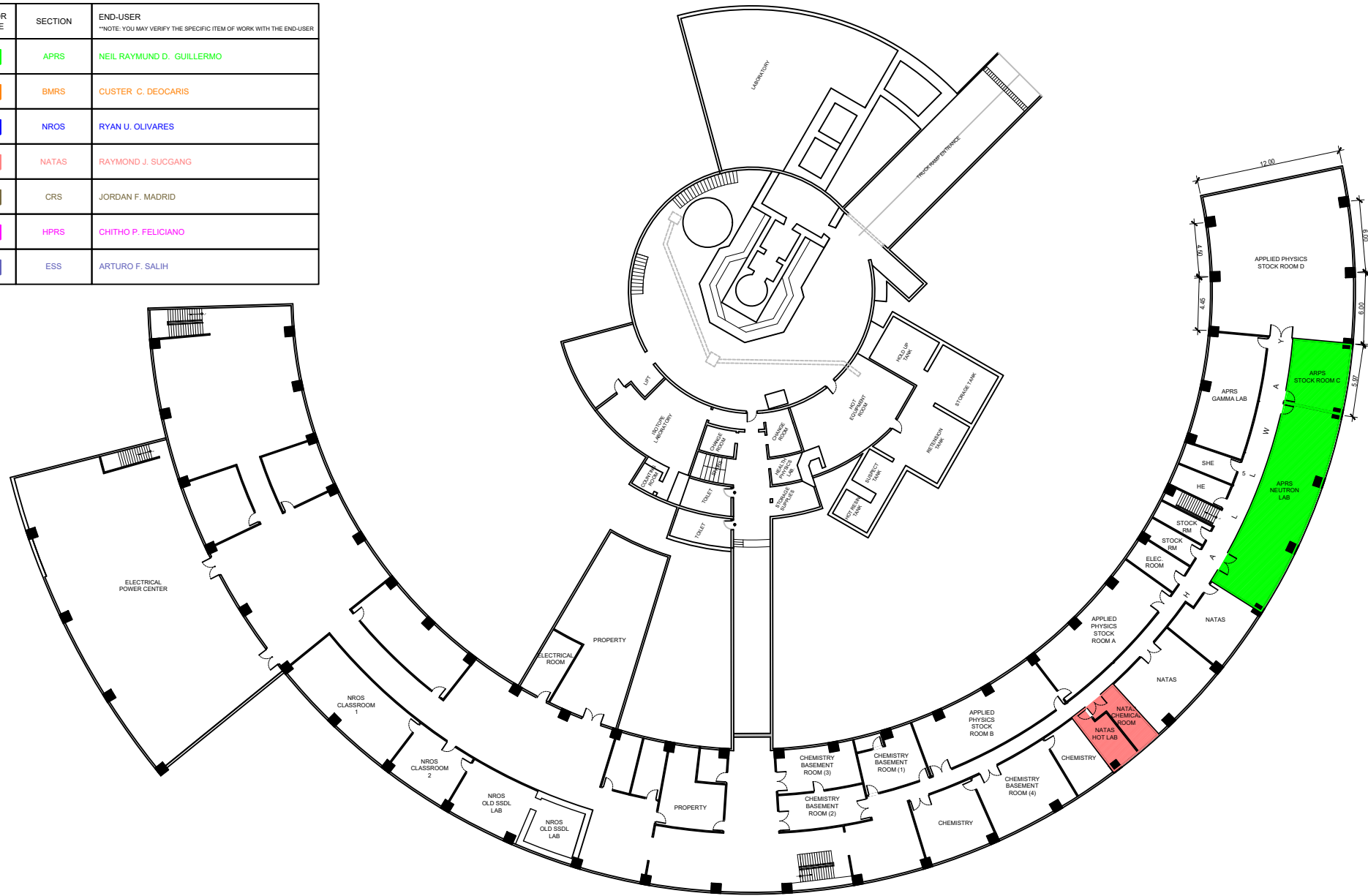
1 NATIONAL DATA CENTER ROOM SECOND FLOOR PLAN (BLOW-UP) SCALE NTS

2 NATIONAL DATA CENTER ROOM PROPOSED FLOOR PLAN SCALE NTS

<p>Republic of the Philippines DEPARTMENT OF SCIENCE AND TECHNOLOGY PHILIPPINE NUCLEAR RESEARCH INSTITUTE COMMONWEALTH AVENUE, DILIMAN, QUEZON CITY</p>	PROJECT TITLE:	SHEET CONTENT/S:	PREPARED BY:	RECOMMENDING APPROVALS:	APPROVED BY:	DRAWN BY:	SHEET NO.
	UPGRADING OF ARC BUILDING (C.Y. 2025)	NATIONAL DATA CENTER ROOM - SECOND FLOOR PLAN (BLOW-UP) - PROPOSED FLOOR PLAN	ENGR. ANDREW C. BARRIDA SSRS, ESS ENGR. ROSALINO B. REJAS SSRS, ESS	ENGR. ARTURO F. SALIH ESS, HEAD CHITHO P. FELICIANO, Ph.D. END-USER, HEAD, HPRS NEIL RAYMUND D. GUILLERMO, M. Sc CHIEF, ARD ENGR. HAYDEE M. SOLOMON OIC-CHIEF, NSD VALLERIE ANN I. SAMSON, Ph. D. DEPUTY DIRECTOR	CARLO A. ARCILLA, Ph. D. DIRECTOR	ENGR. C. PELMONTE	A - 47
						CHECKED BY:	
						DATE:	
						PAGE NO. OF TOTAL NO. OF PAGES	47 of 84


GENERAL NOTE: DRAWINGS MAY NOT BE IN SCALE. USE MARKED DIMENSIONS. VERIFY ACTUAL MEASUREMENTS. INFORM THE DESIGN TEAM OF ANY DISCREPANCIES FOUND IN THE DRAWINGS, DOCUMENTS, AND ACTUAL SITE CONDITIONS.

COLOR CODE	SECTION	END-USER **NOTE: YOU MAY VERIFY THE SPECIFIC ITEM OF WORK WITH THE END-USER
■	APRS	NEIL RAYMUND D. GUILLERMO
■	BMRS	CUSTER C. DEOCARIS
■	NROS	RYAN U. OLIVARES
■	NATAS	RAYMOND J. SUCGANG
■	CRS	JORDAN F. MADRID
■	HPRS	CHITHO P. FELICIANO
■	ESS	ARTURO F. SALIH

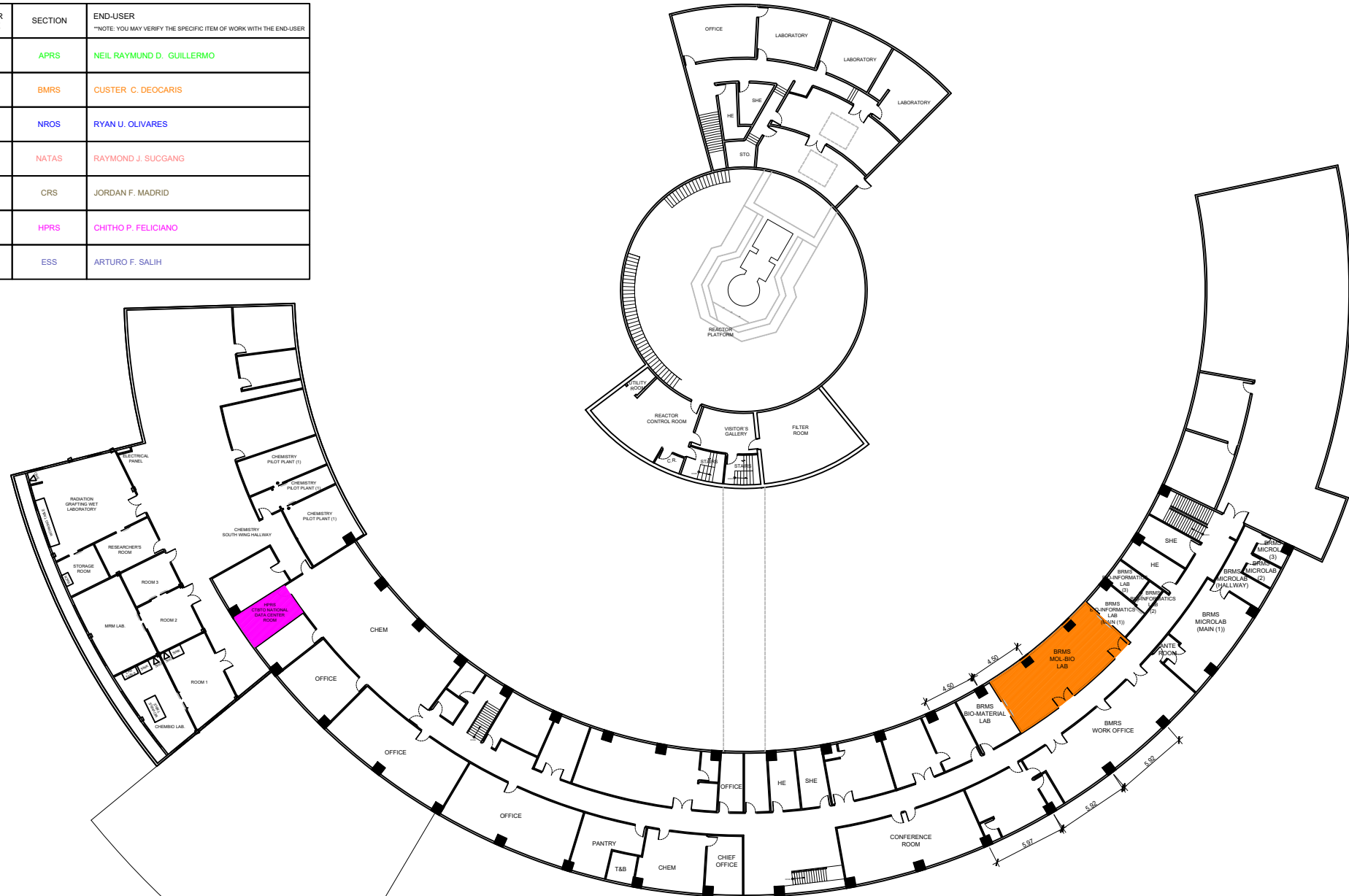


NOTE:
ALL HIGHLIGHTED AREAS MAINLY PERTAINS TO MECHANICAL PROGRAM OF WORKS. KINDLY REFER TO THE OTHER DRAWING PLANS FOR THEIR RESPECTIVE PROGRAM OF WORKS

1
M - 01 ARC BUILDING
BASEMENT FLOOR PLAN
SCALE NTS


 <p>Republic of the Philippines DEPARTMENT OF SCIENCE AND TECHNOLOGY PHILIPPINE NUCLEAR RESEARCH INSTITUTE COMMONWEALTH AVENUE, DILIMAN, QUEZON CITY</p>	PROJECT TITLE:	SHEET CONTENT/S:	PREPARED BY:	RECOMMENDING APPROVALS:	APPROVED BY:	DRAWN BY:	SHEET NO.	
	UPGRADING OF ARC BUILDING (C.Y. 2025)	ARC BUILDING - BASEMENT FLOOR PLAN	ENGR. ANDREW C. BARRIDA SSRS, ESS	ENGR. ARTURO F. SALIH ESS, HEAD CHITHO P. FELICIANO, Ph.D. END-USER, HEAD, HPRS	ENGR. CARLO A. ARCILLA, Ph. D. DIRECTOR	ENGR. C. PELMONTE	M - 01	
			ENGR. ROSALINO B. REJAS SSRS, ESS	ENGR. HAYDEE M. SOLOMON OIC-CHIEF, NSD VALLERIE ANN I. SAMSON, Ph. D. DEPUTY DIRECTOR		CHECKED BY:		PAGE NO. OF TOTAL NO. OF PAGES
						DATE:		48 of 84

COLOR CODE	SECTION	END-USER <small>**NOTE: YOU MAY VERIFY THE SPECIFIC ITEM OF WORK WITH THE END-USER</small>
■	APRS	NEIL RAYMUND D. GUILLERMO
■	BMRS	CUSTER C. DEOCARIS
■	NROS	RYAN U. OLIVARES
■	NATAS	RAYMOND J. SUCGANG
■	CRS	JORDAN F. MADRID
■	HPRS	CHITHO P. FELICIANO
■	ESS	ARTURO F. SALIH

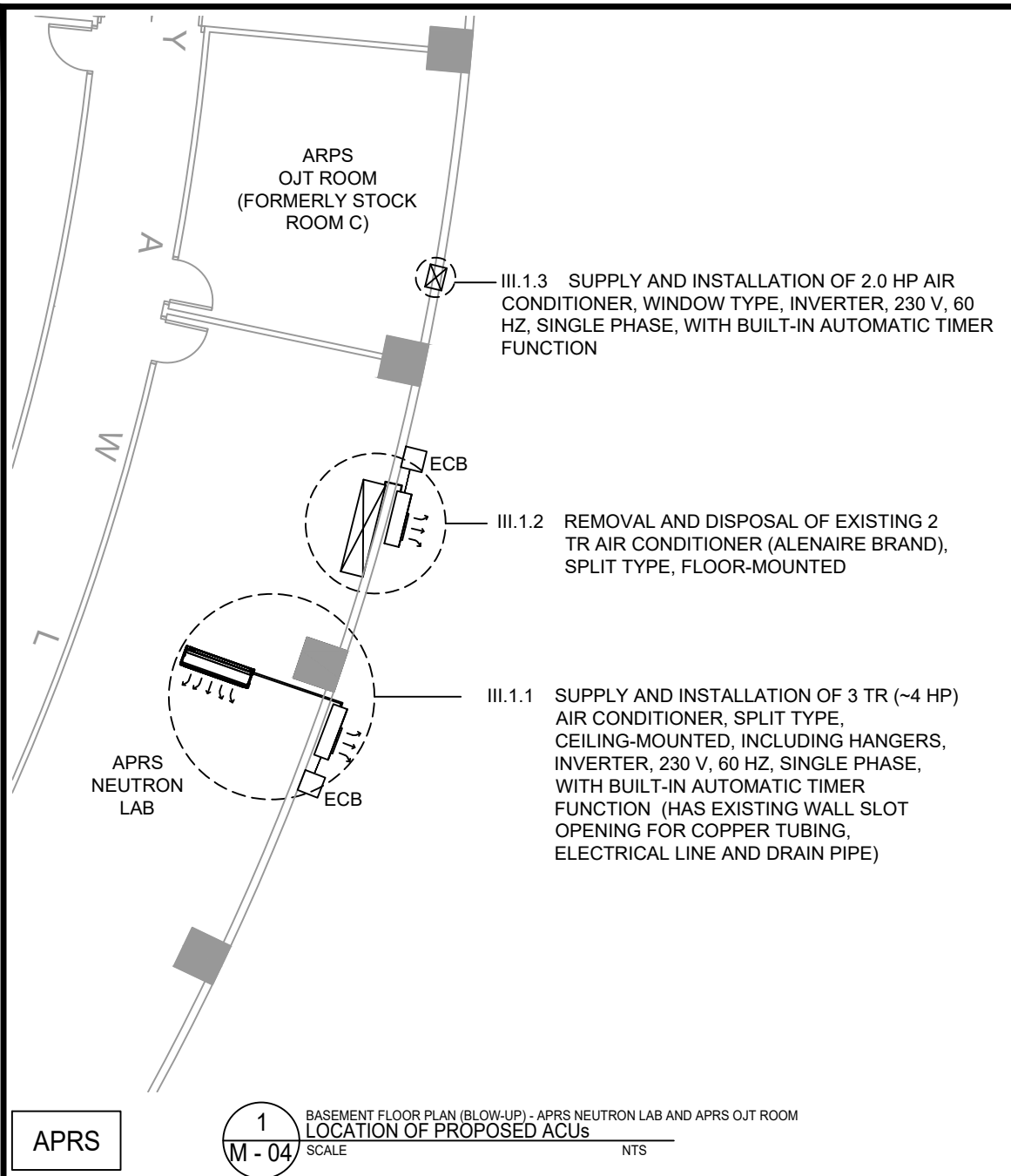


NOTE:
ALL HIGHLIGHTED AREAS MAINLY PERTAINS TO MECHANICAL PROGRAM OF WORKS. KINDLY REFER TO THE OTHER DRAWING PLANS FOR THEIR RESPECTIVE PROGRAM OF WORKS

1
ARC BUILDING
SECOND FLOOR PLAN
M - 03 SCALE NTS

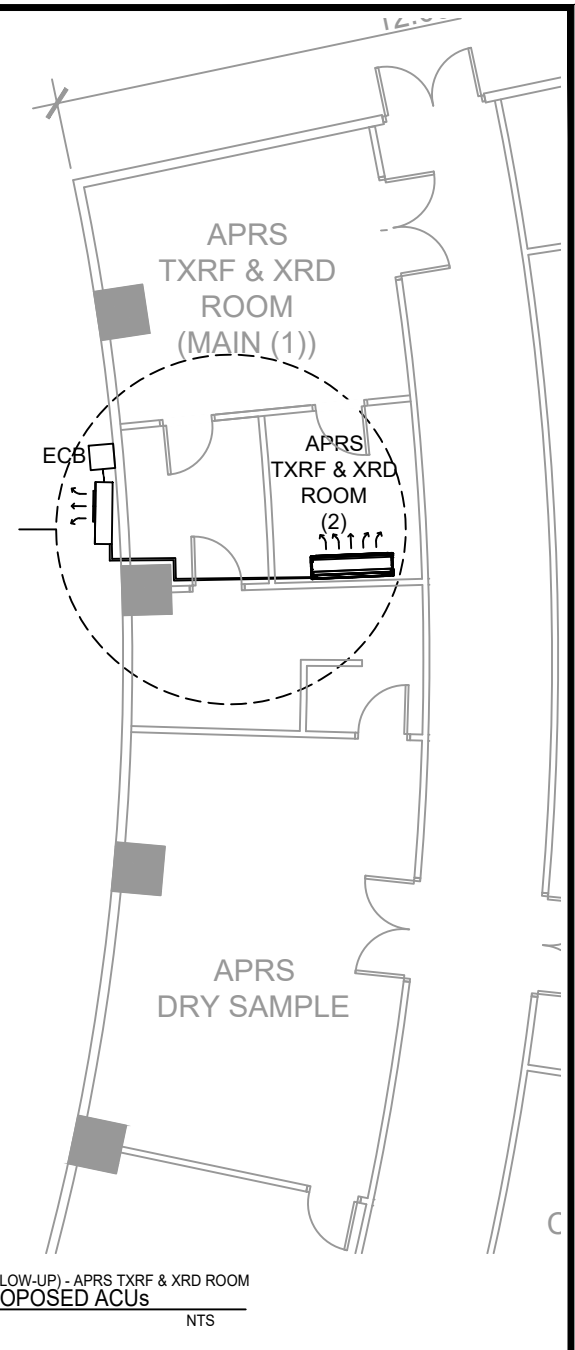
 <p>Republic of the Philippines DEPARTMENT OF SCIENCE AND TECHNOLOGY PHILIPPINE NUCLEAR RESEARCH INSTITUTE COMMONWEALTH AVENUE, DILIMAN, QUEZON CITY</p>	PROJECT TITLE:	SHEET CONTENT/S:	PREPARED BY:	RECOMMENDING APPROVALS:	APPROVED BY:	DRAWN BY:	SHEET NO.	
	UPGRADING OF ARC BUILDING (C.Y. 2025)	ARC BUILDING - SECOND FLOOR PLAN	ENGR. ANDREW C. BARRIDA SSRS, ESS	ENGR. ARTURO F. SALIH ESS, HEAD CHITHO P. FELICIANO, Ph.D. END-USER, HEAD, HPRS NEIL RAYMUND D. GUILLERMO, M. Sc CHIEF, ARD	CARLO A. ARCILLA, Ph. D. DIRECTOR	ENGR. C. PELMONTE	M - 03	
			ENGR. ROSALINO B. REJAS SSRS, ESS	ENGR. HAYDEE M. SOLOMON OIC-CHIEF, NSD VALLERIE ANN I. SAMSON, Ph. D. DEPUTY DIRECTOR		CHECKED BY:		PAGE NO. OF TOTAL NO. OF PAGES
						DATE:		50 of 84

GENERAL NOTE: DRAWINGS MAY NOT BE IN SCALE. USE MARKED DIMENSIONS. VERIFY ACTUAL MEASUREMENTS. INFORM THE DESIGN TEAM OF ANY DISCREPANCIES FOUND IN THE DRAWINGS, DOCUMENTS, AND ACTUAL SITE CONDITIONS.



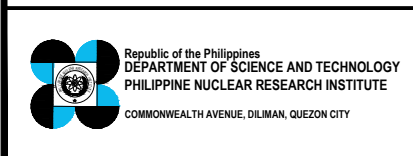
1 BASEMENT FLOOR PLAN (BLOW-UP) - APRS NEUTRON LAB AND APRS OJT ROOM
M - 04 LOCATION OF PROPOSED ACUs
 SCALE NTS

- III.1.4 SUPPLY AND INSTALLATION OF 1.0 HP AIR CONDITIONER, SPLIT TYPE, WALL-MOUNTED, INVERTER, 230 V, 60 HZ, SINGLE PHASE, WITH BUILT-IN AUTOMATIC TIMER FUNCTION
- III.1.5 PROVISION OF WALL SLOT OPENING FOR COPPER TUBING, ELECTRICAL LINE AND DRAIN PIPE (BREAKING OF CONCRETE, PLASTERING AND PAINTING FOR 1 UNIT OF 1.0 HP AIR CONDITIONER)



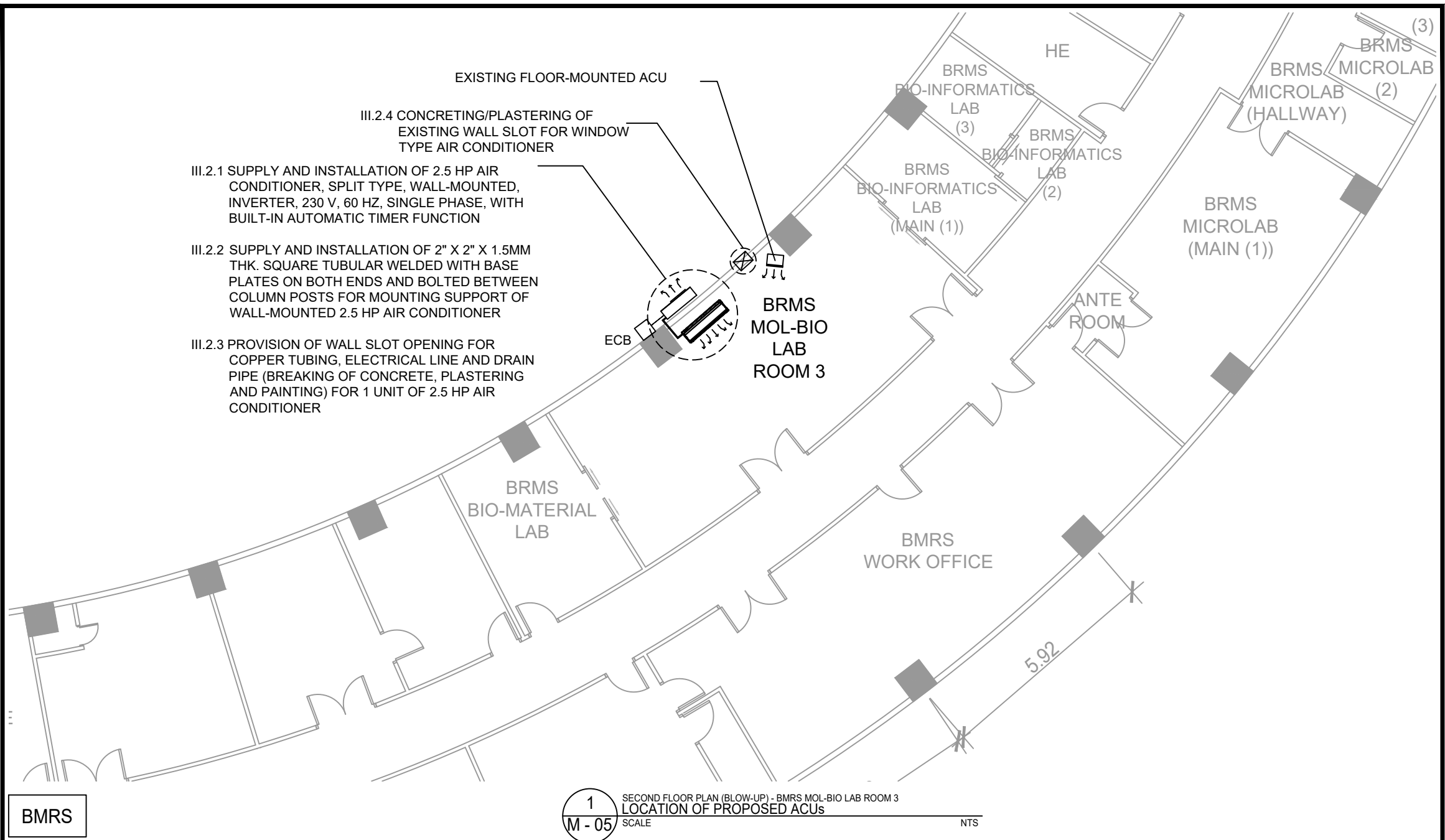
2 GROUND FLOOR PLAN (BLOW-UP) - APRS TXRF & XRD ROOM
M - 04 LOCATION OF PROPOSED ACUs
 SCALE NTS

APRS



PROJECT TITLE:	SHEET CONTENT/S:	PREPARED BY:	RECOMMENDING APPROVALS:	APPROVED BY:	DRAWN BY:	SHEET NO.
UPGRADING OF ARC BUILDING (C.Y. 2025)	BASEMENT FLOOR PLAN (BLOW-UP) - APRS NEUTRON LAB AND APRS OJT ROOM - LOCATION OF PROPOSED ACUs GROUND FLOOR PLAN (BLOW-UP) - APRS TXRF & XRD ROOM - LOCATION OF PROPOSED ACUs	ENGR. ANDREW C. BARRIDA <small>SSRS, ESS</small> ENGR. ROSALINO B. REJAS <small>SSRS, ESS</small>	ENGR. ARTURO F. SALIH <small>ESS, HEAD</small> CHITHO P. FELICIANO, Ph.D. <small>END-USER, HEAD, HPRS</small> NEIL RAYMUND D. GUILLERMO, M. Sc <small>CHIEF, ARD</small> ENGR. HAYDEE M. SOLOMON <small>OIC-CHIEF, NSD</small> VALLERIE ANN I. SAMSON, Ph. D. <small>DEPUTY DIRECTOR</small>	CARLO A. ARCILLA, Ph. D. <small>DIRECTOR</small>	ENGR. C. PELMONTE CHECKED BY: DATE:	M - 04 <small>PAGE NO. OF TOTAL NO. OF PAGES</small> 51 of 84


GENERAL NOTE: DRAWINGS MAY NOT BE IN SCALE. USE MARKED DIMENSIONS. VERIFY ACTUAL MEASUREMENTS. INFORM THE DESIGN TEAM OF ANY DISCREPANCIES FOUND IN THE DRAWINGS, DOCUMENTS, AND ACTUAL SITE CONDITIONS.



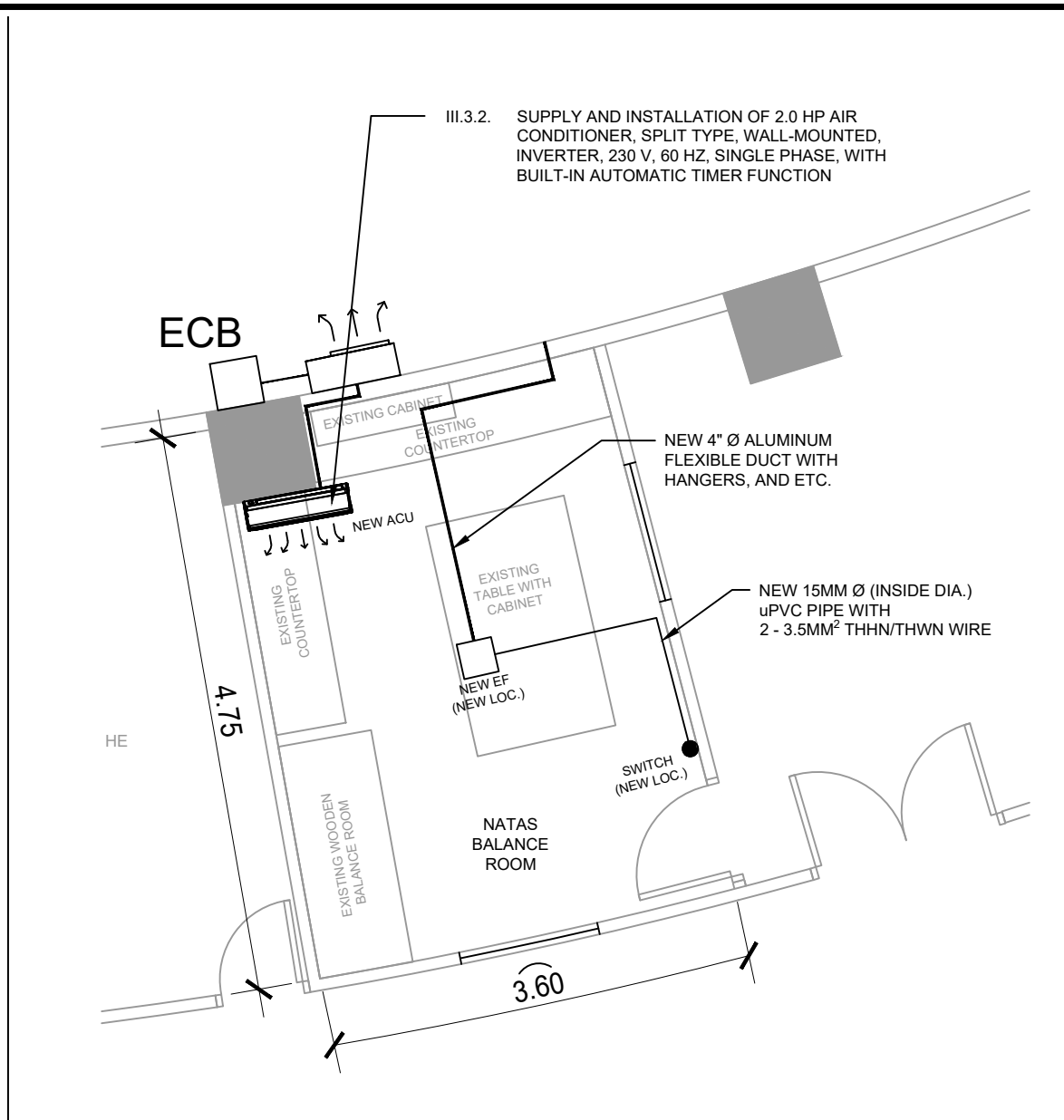
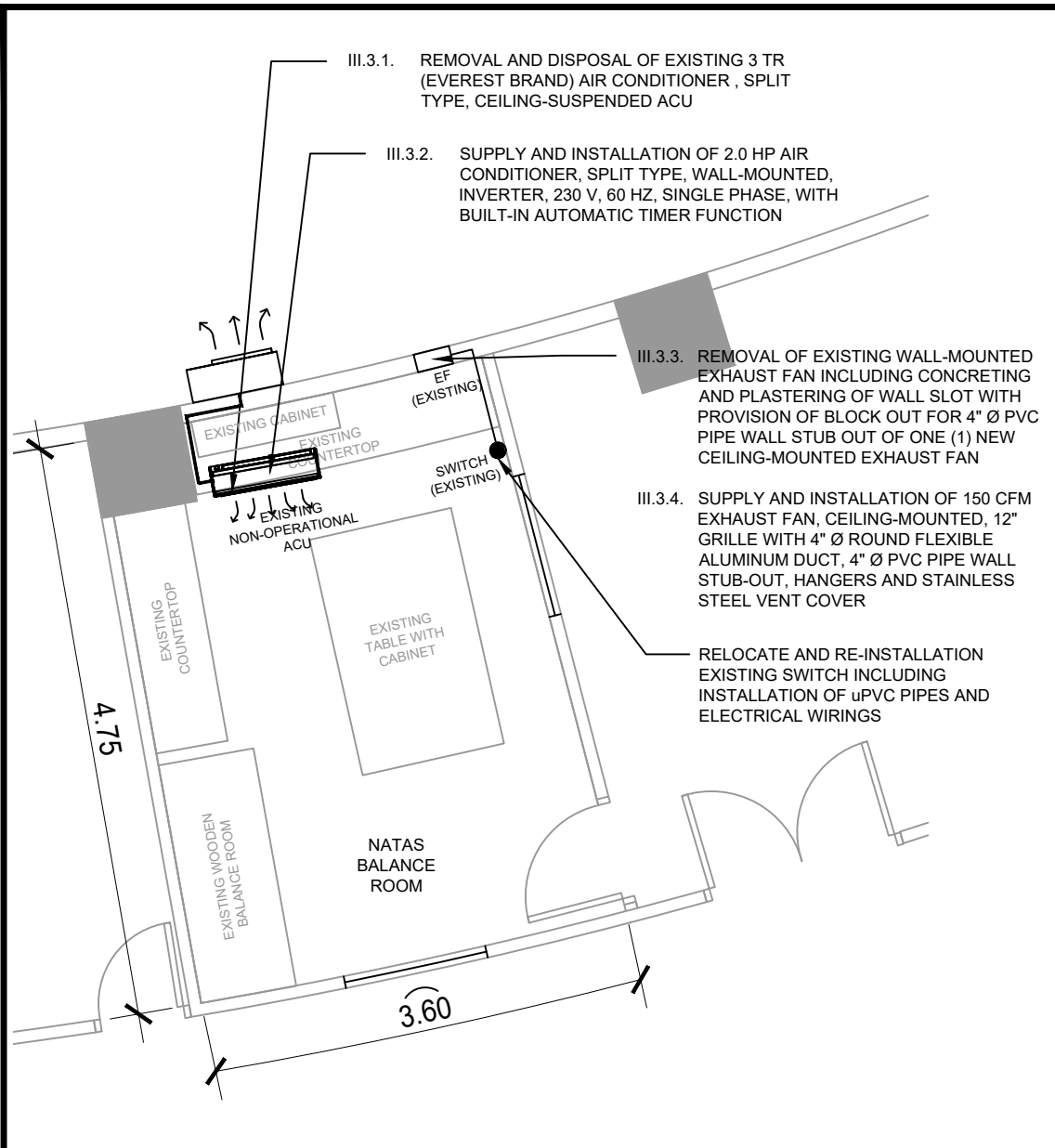
- III.2.1 SUPPLY AND INSTALLATION OF 2.5 HP AIR CONDITIONER, SPLIT TYPE, WALL-MOUNTED, INVERTER, 230 V, 60 HZ, SINGLE PHASE, WITH BUILT-IN AUTOMATIC TIMER FUNCTION
- III.2.2 SUPPLY AND INSTALLATION OF 2" X 2" X 1.5MM THK. SQUARE TUBULAR WELDED WITH BASE PLATES ON BOTH ENDS AND BOLTED BETWEEN COLUMN POSTS FOR MOUNTING SUPPORT OF WALL-MOUNTED 2.5 HP AIR CONDITIONER
- III.2.3 PROVISION OF WALL SLOT OPENING FOR COPPER TUBING, ELECTRICAL LINE AND DRAIN PIPE (BREAKING OF CONCRETE, PLASTERING AND PAINTING) FOR 1 UNIT OF 2.5 HP AIR CONDITIONER
- III.2.4 CONCRETING/PLASTERING OF EXISTING WALL SLOT FOR WINDOW TYPE AIR CONDITIONER

1 SECOND FLOOR PLAN (BLOW-UP) - BMRS MOL-BIO LAB ROOM 3
 LOCATION OF PROPOSED ACUs
 M - 05 SCALE NTS

BMRS

 <p>Republic of the Philippines DEPARTMENT OF SCIENCE AND TECHNOLOGY PHILIPPINE NUCLEAR RESEARCH INSTITUTE COMMONWEALTH AVENUE, DILIMAN, QUEZON CITY</p>	PROJECT TITLE:	SHEET CONTENT/S:	PREPARED BY:	RECOMMENDING APPROVALS:	APPROVED BY:	DRAWN BY:	SHEET NO.
	UPGRADING OF ARC BUILDING (C.Y. 2025)	SECOND FLOOR PLAN (BLOW-UP) - BMRS MOL-BIO LAB ROOM 3 - LOCATION OF PROPOSED ACUs	<u>ENGR. ANDREW C. BARRIDA</u> <small>SSRS, ESS</small> <u>ENGR. ROSALINO B. REJAS</u> <small>SSRS, ESS</small>	<u>ENGR. ARTURO F. SALIH</u> <small>ESS, HEAD</small> <u>NEIL RAYMUND D. GUILLERMO, M. Sc</u> <small>CHIEF, ARD</small> <u>ENGR. HAYDEE M. SOLOMON</u> <small>OIC-CHIEF, NSD</small>	<u>CHITHO P. FELICIANO, Ph.D.</u> <small>END-USER, HEAD, HPRS</small> <u>VALLERIE ANN I. SAMSON, Ph. D.</u> <small>DEPUTY DIRECTOR</small>	<u>ENGR. C. PELMONTE</u> <small>CHECKED BY:</small> <small>DATE:</small>	M - 05 <small>PAGE NO. OF TOTAL NO. OF PAGES</small> 52 of 84
						<u>CARLO A. ARCILLA, Ph. D.</u> <small>DIRECTOR</small>	

GENERAL NOTE: DRAWINGS MAY NOT BE IN SCALE. USE MARKED DIMENSIONS. VERIFY ACTUAL MEASUREMENTS. INFORM THE DESIGN TEAM OF ANY DISCREPANCIES FOUND IN THE DRAWINGS, DOCUMENTS, AND ACTUAL SITE CONDITIONS.



1 GROUND FLOOR PLAN (BLOW-UP) - NATAS BALANCE ROOM
 LOCATION OF EXISTING ACUs AND EXHAUST FAN
 SCALE NTS

2 GROUND FLOOR PLAN (BLOW-UP) - NATAS BALANCE ROOM
 LOCATION OF PROPOSED ACUs AND EXHAUST FAN
 SCALE NTS



Republic of the Philippines
 DEPARTMENT OF SCIENCE AND TECHNOLOGY
 PHILIPPINE NUCLEAR RESEARCH INSTITUTE
 COMMONWEALTH AVENUE, DILIMAN, QUEZON CITY

PROJECT TITLE:	UPGRADING OF ARC BUILDING (C.Y. 2025)
-----------------------	---------------------------------------

SHEET CONTENT/S:	GROUND FLOOR PLAN (BLOW-UP) - NATAS BALANCE ROOM - LOCATION OF EXISTING ACUs AND EXHAUST FAN - LOCATION OF PROPOSED ACUs AND EXHAUST FAN
-------------------------	--

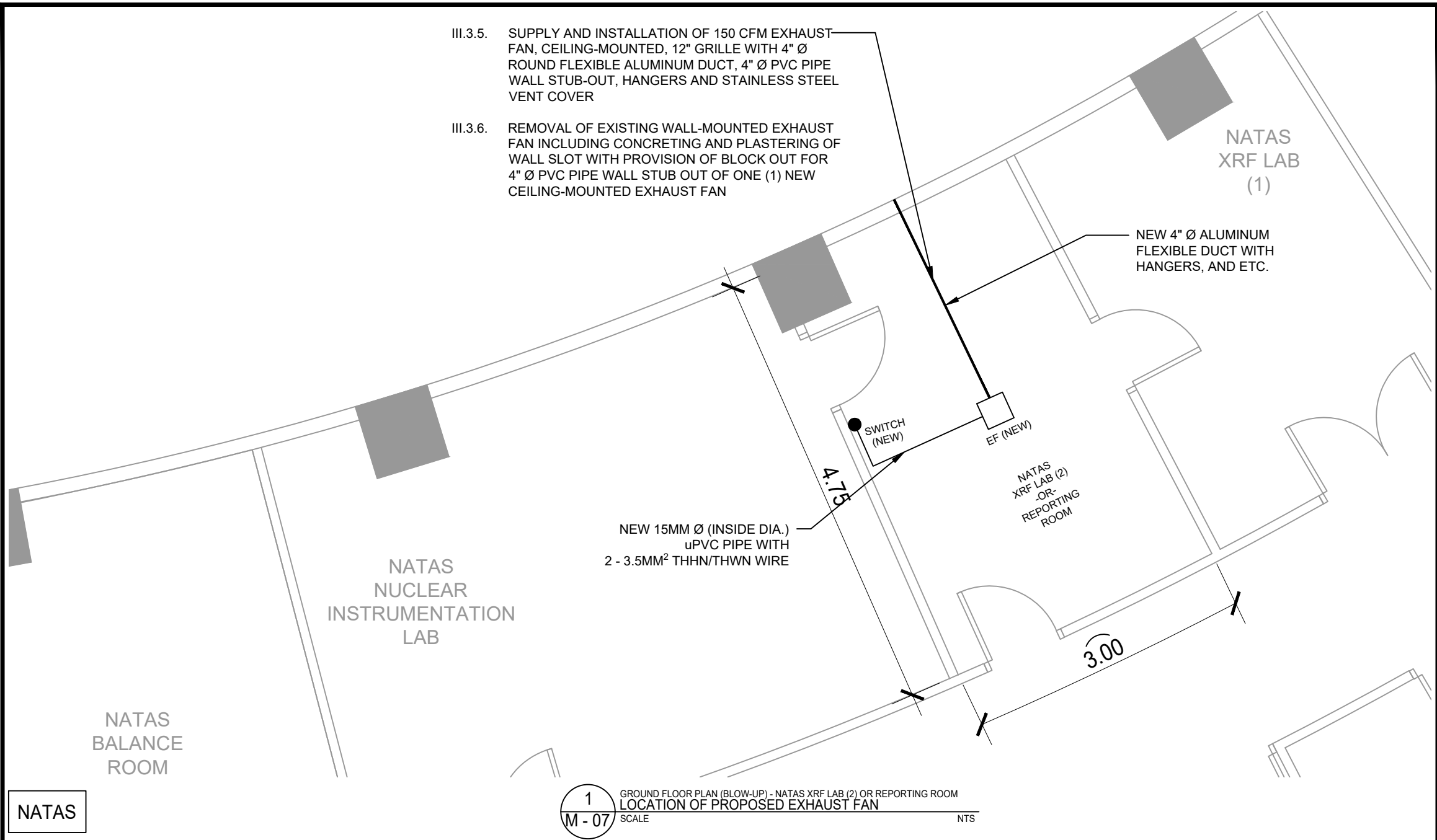
PREPARED BY:	ENGR. ANDREW C. BARRIDA <small>SSRS, ESS</small> ENGR. ROSALINO B. REJAS <small>SSRS, ESS</small>
---------------------	--

RECOMMENDING APPROVALS:	ENGR. ARTURO F. SALIH <small>ESS, HEAD</small> NEIL RAYMUND D. GUILLERMO, M. Sc <small>CHIEF, ARD</small> ENGR. HAYDEE M. SOLOMON <small>OIC-CHIEF, NSD</small> CHITHO P. FELICIANO, Ph.D. <small>END-USER, HEAD, HPRS</small> VALLERIE ANN I. SAMSON, Ph. D. <small>DEPUTY DIRECTOR</small>
--------------------------------	---

APPROVED BY:	CARLO A. ARCILLA, Ph. D. <small>DIRECTOR</small>
---------------------	---


DRAWN BY:	ENGR. C. PELMONTE
CHECKED BY:	
DATE:	
SHEET NO.	M - 06
PAGE NO. OF TOTAL NO. OF PAGES	53 of 84

GENERAL NOTE: DRAWINGS MAY NOT BE IN SCALE. USE MARKED DIMENSIONS. VERIFY ACTUAL MEASUREMENTS. INFORM THE DESIGN TEAM OF ANY DISCREPANCIES FOUND IN THE DRAWINGS, DOCUMENTS, AND ACTUAL SITE CONDITIONS.



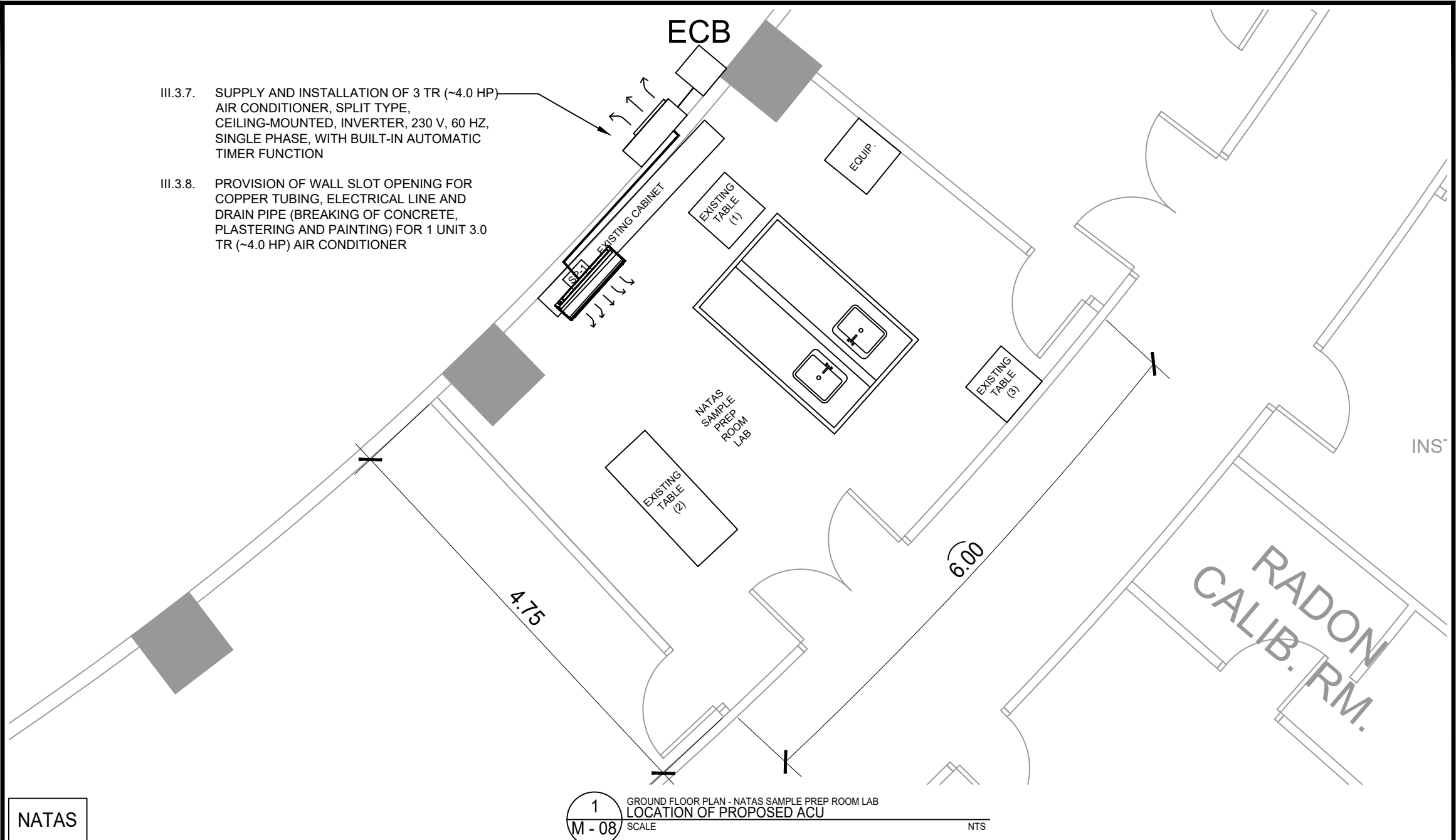
NATAS

1
M - 07
GROUND FLOOR PLAN (BLOW-UP) - NATAS XRF LAB (2) OR REPORTING ROOM
LOCATION OF PROPOSED EXHAUST FAN
SCALE NTS

 <p>Republic of the Philippines DEPARTMENT OF SCIENCE AND TECHNOLOGY PHILIPPINE NUCLEAR RESEARCH INSTITUTE COMMONWEALTH AVENUE, DILIMAN, QUEZON CITY</p>	PROJECT TITLE:	SHEET CONTENT/S:	PREPARED BY:	RECOMMENDING APPROVALS:	APPROVED BY:	DRAWN BY:	SHEET NO.	
	UPGRADING OF ARC BUILDING (C.Y. 2025)	GROUND FLOOR PLAN (BLOW-UP) - NATAS XRF LAB (2) OR REPORTING ROOM - LOCATION OF PROPOSED EXHAUST FAN	ENGR. ANDREW C. BARRIDA SSRS, ESS	ENGR. ARTURO F. SALIH ESS, HEAD CHITHO P. FELICIANO, Ph.D. END-USER, HEAD, HPRS	ENGR. ROSALINO B. REJAS SSRS, ESS	NEIL RAYMUND D. GUILLERMO, M. Sc CHIEF, ARD	ENGR. C. PELMONTE	M - 07
				ENGR. HAYDEE M. SOLOMON OTC-CHIEF, NSD	VALLERIE ANN I. SAMSON, Ph. D. DEPUTY DIRECTOR	CARLO A. ARCILLA, Ph. D. DIRECTOR	CHECKED BY:	PAGE NO. OF TOTAL NO. OF PAGES
							DATE:	54 of 84


GENERAL NOTE: DRAWINGS MAY NOT BE IN SCALE. USE MARKED DIMENSIONS. VERIFY ACTUAL MEASUREMENTS. INFORM THE DESIGN TEAM OF ANY DISCREPANCIES FOUND IN THE DRAWINGS, DOCUMENTS, AND ACTUAL SITE CONDITIONS.

- III.3.7. SUPPLY AND INSTALLATION OF 3 TR (~4.0 HP) AIR CONDITIONER, SPLIT TYPE, CEILING-MOUNTED, INVERTER, 230 V, 60 HZ, SINGLE PHASE, WITH BUILT-IN AUTOMATIC TIMER FUNCTION
- III.3.8. PROVISION OF WALL SLOT OPENING FOR COPPER TUBING, ELECTRICAL LINE AND DRAIN PIPE (BREAKING OF CONCRETE, PLASTERING AND PAINTING) FOR 1 UNIT 3.0 TR (~4.0 HP) AIR CONDITIONER

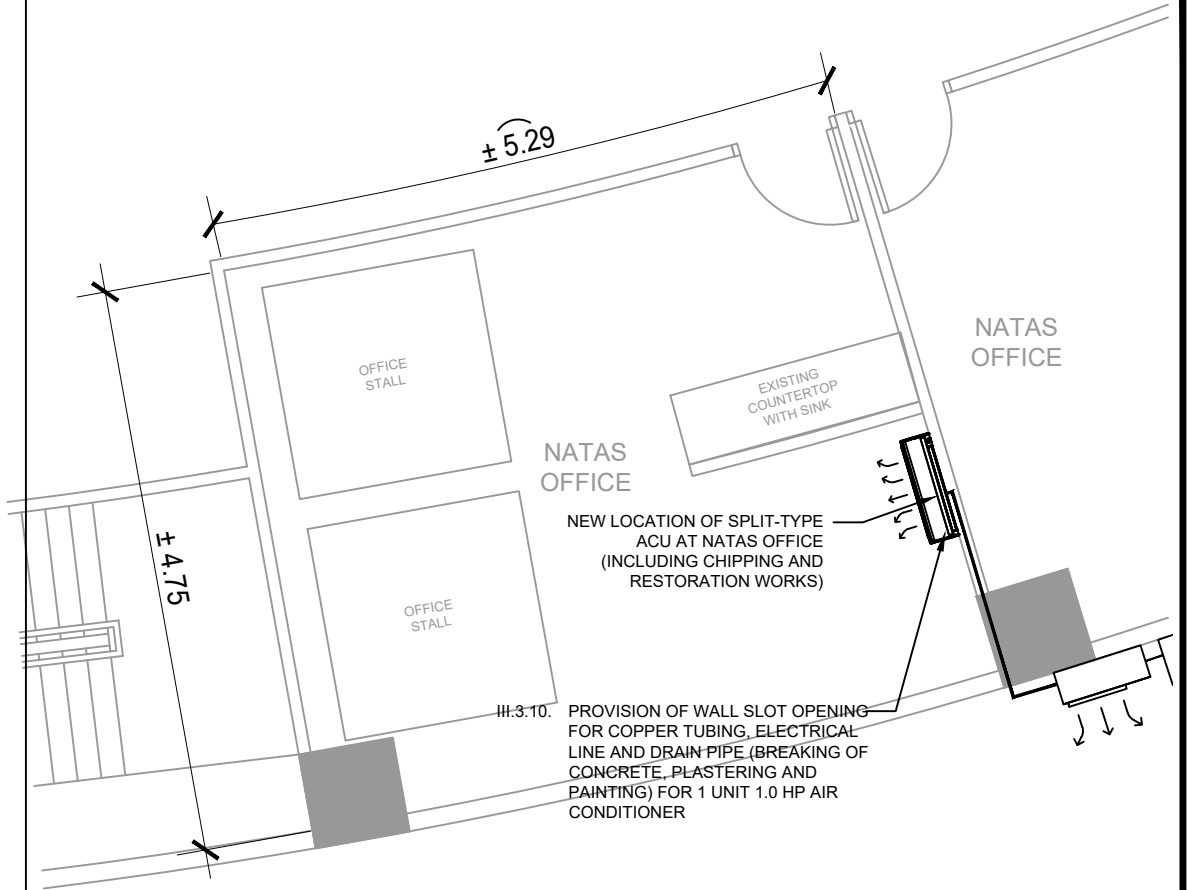
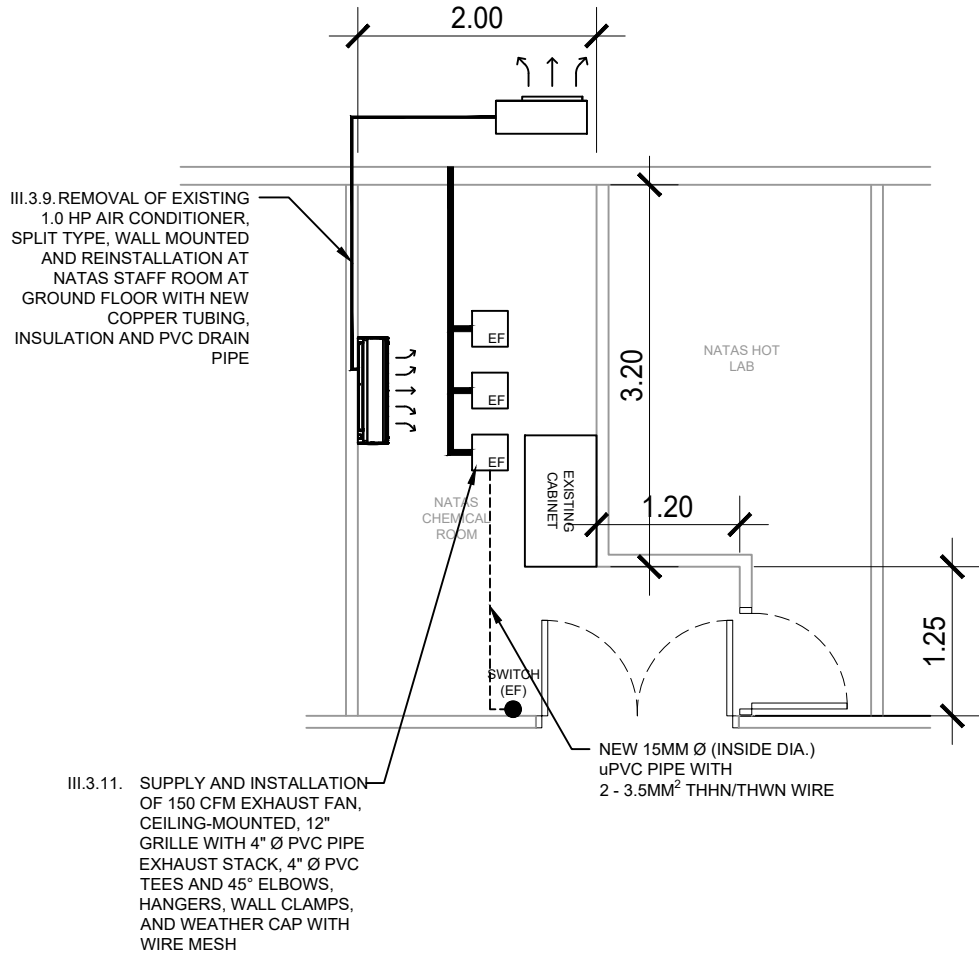


NATAS

1
M - 08
GROUND FLOOR PLAN - NATAS SAMPLE PREP ROOM LAB
LOCATION OF PROPOSED ACU
SCALE NTS

 <p>Republic of the Philippines DEPARTMENT OF SCIENCE AND TECHNOLOGY PHILIPPINE NUCLEAR RESEARCH INSTITUTE COMMONWEALTH AVENUE, DILIMAN, QUEZON CITY</p>	PROJECT TITLE:	SHEET CONTENT/S:	PREPARED BY:	RECOMMENDING APPROVALS:	APPROVED BY:	DRAWN BY:	SHEET NO.
	UPGRADING OF ARC BUILDING (C.Y. 2025)	GROUND FLOOR PLAN - NATAS SAMPLE PREP ROOM LAB - LOCATION OF PROPOSED ACU	<u>ENGR. ANDREW C. BARRIDA</u> SSRS, ESS <u>ENGR. ROSALINO B. REJAS</u> SSRS, ESS	<u>ENGR. ARTURO F. SALIH</u> ESS, HEAD <u>NEIL RAYMUND D. GUILLERMO, M. Sc</u> CHIEF, ARD <u>ENGR. HAYDEE M. SOLOMON</u> OIC-CHIEF, NSD	<u>CHITHO P. FELICIANO, Ph.D.</u> END-USER, HEAD, HPRS <u>VALLERIE ANN I. SAMSON, Ph. D.</u> DEPUTY DIRECTOR	<u>ENGR. C. PELMONTE</u> CHECKED BY: DATE:	M - 08
					<u>CARLO A. ARCILLA, Ph. D.</u> DIRECTOR		PAGE NO. OF TOTAL NO. OF PAGES
							55 of 84


GENERAL NOTE: DRAWINGS MAY NOT BE IN SCALE. USE MARKED DIMENSIONS. VERIFY ACTUAL MEASUREMENTS. INFORM THE DESIGN TEAM OF ANY DISCREPANCIES FOUND IN THE DRAWINGS, DOCUMENTS, AND ACTUAL SITE CONDITIONS.



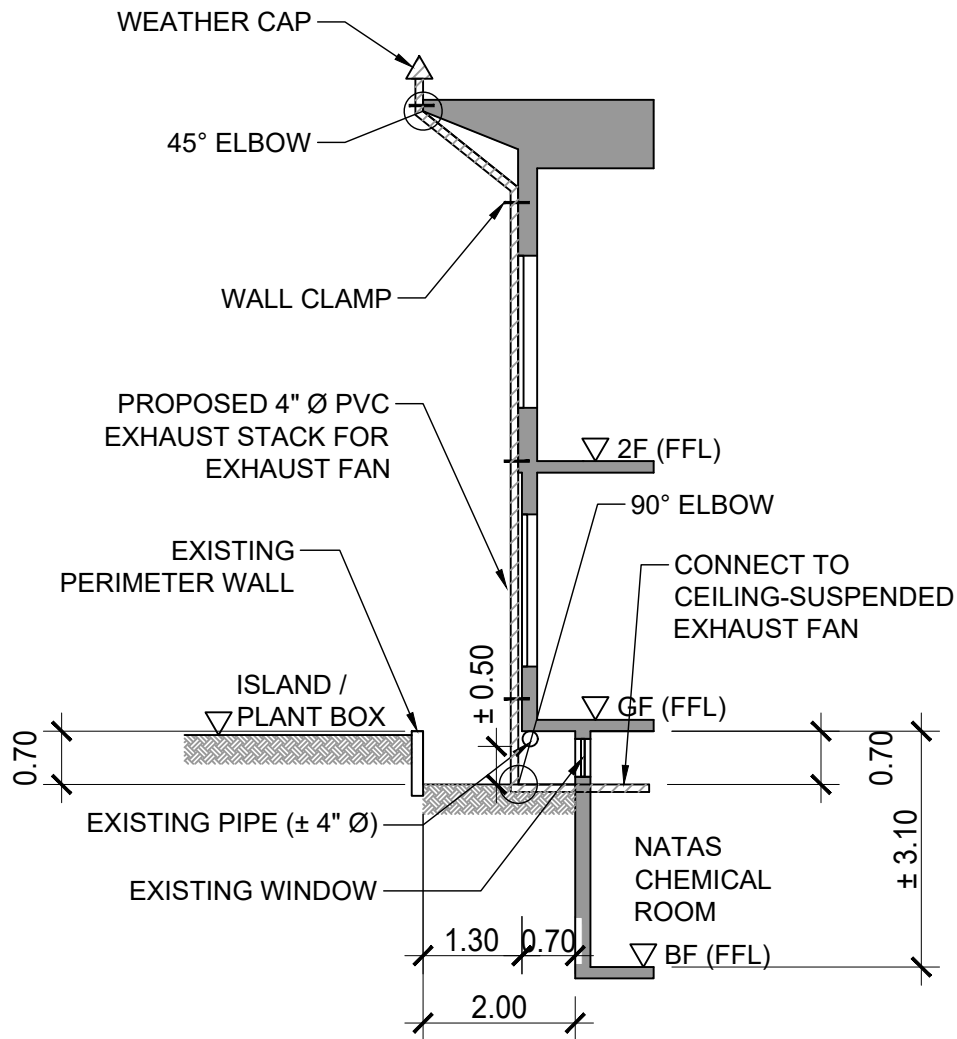
NATAS

1
M - 09
BASEMENT FLOOR PLAN (BLOW-UP) - NATAS CHEMICAL ROOM
LOCATION OF EXISTING ACU AND PROPOSED EXHAUST FANS
SCALE NTS

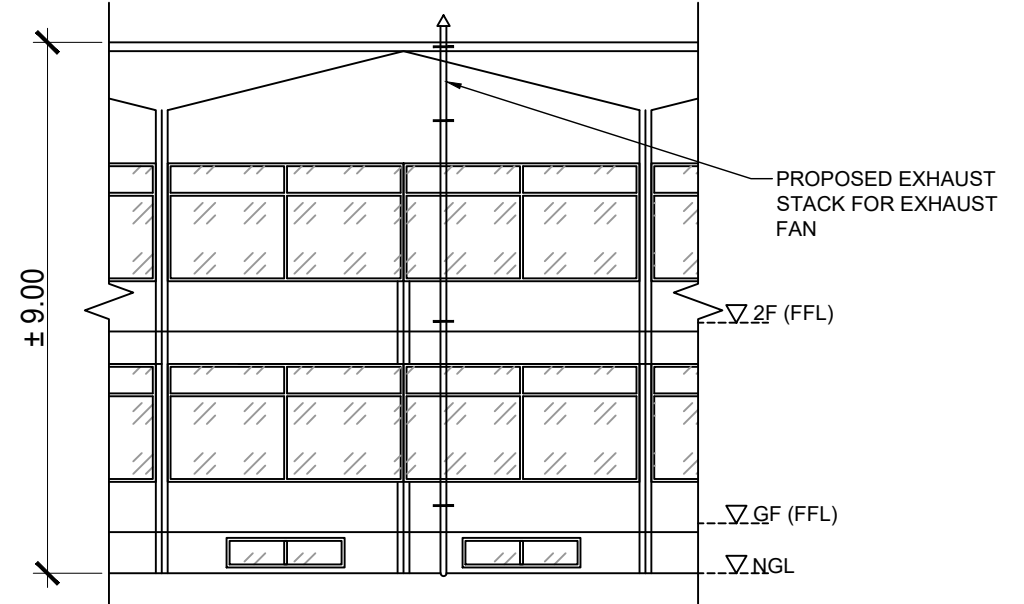
2
M - 09
GROUND FLOOR PLAN (BLOW-UP) - NATAS OFFICE
LOCATION OF RELOCATED ACU
SCALE NTS

 <p>Republic of the Philippines DEPARTMENT OF SCIENCE AND TECHNOLOGY PHILIPPINE NUCLEAR RESEARCH INSTITUTE COMMONWEALTH AVENUE, DILIMAN, QUEZON CITY</p>	PROJECT TITLE:	SHEET CONTENT/S:	PREPARED BY:	RECOMMENDING APPROVALS:	APPROVED BY:	DRAWN BY:	SHEET NO.
	UPGRADING OF ARC BUILDING (C.Y. 2025)	BASEMENT FLOOR PLAN (BLOW-UP) - NATAS CHEMICAL ROOM - LOCATION OF EXISTING ACU AND PROPOSED EXHAUST FANS GROUND FLOOR PLAN (BLOW-UP) - NATAS OFFICE - LOCATION OF RELOCATED ACU	<u>ENGR. ANDREW C. BARRIDA</u> <small>SSRS, ESS</small>	<u>ENGR. ARTURO F. SALIH</u> <small>ESS, HEAD</small>	<u>CHITHO P. FELICIANO, Ph.D.</u> <small>END-USER, HEAD, HPRS</small>	<u>ENGR. C. PELMONTE</u>	M - 09
			<u>ENGR. ROSALINO B. REJAS</u> <small>SSRS, ESS</small>	<u>NEIL RAYMUND D. GUILLERMO, M. Sc</u> <small>CHIEF, ARD</small>	<u>CARLO A. ARCILLA, Ph. D.</u> <small>DIRECTOR</small>	CHECKED BY: DATE:	
			<u>ENGR. HAYDEE M. SOLOMON</u> <small>OIC-CHIEF, NSD</small>	<u>VALLERIE ANN I. SAMSON, Ph. D.</u> <small>DEPUTY DIRECTOR</small>	DATE:	PAGE NO. OF TOTAL NO. OF PAGES 56 OF 84	

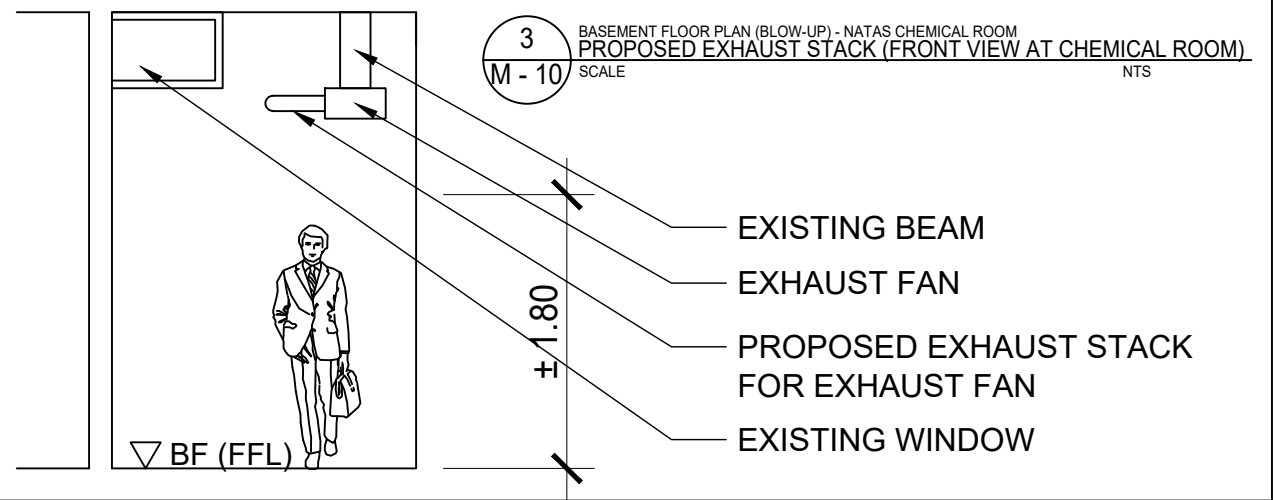
GENERAL NOTE: DRAWINGS MAY NOT BE IN SCALE. USE MARKED DIMENSIONS. VERIFY ACTUAL MEASUREMENTS. INFORM THE DESIGN TEAM OF ANY DISCREPANCIES FOUND IN THE DRAWINGS, DOCUMENTS, AND ACTUAL SITE CONDITIONS.



1 BASEMENT FLOOR PLAN (BLOW-UP) - NATAS CHEMICAL ROOM
 PROPOSED EXHAUST STACK (SIDE SECTION)
 M - 10 SCALE NTS

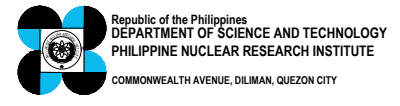


2 BASEMENT FLOOR PLAN (BLOW-UP) - NATAS CHEMICAL ROOM
 PROPOSED EXHAUST STACK (FRONT VIEW AT EXTERIOR)
 M - 10 SCALE NTS



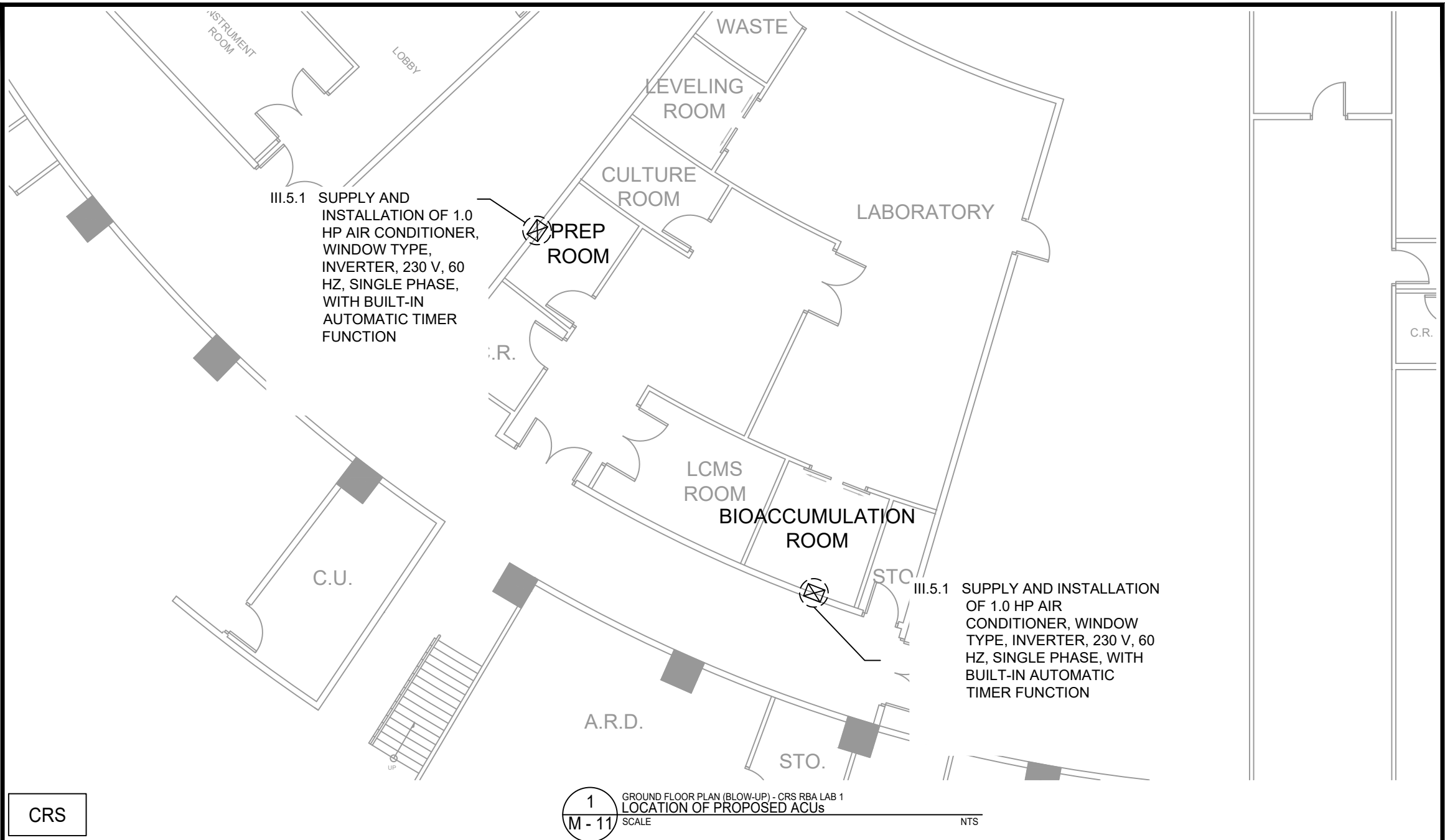
3 BASEMENT FLOOR PLAN (BLOW-UP) - NATAS CHEMICAL ROOM
 PROPOSED EXHAUST STACK (FRONT VIEW AT CHEMICAL ROOM)
 M - 10 SCALE NTS

NATAS




PROJECT TITLE:	SHEET CONTENT/S:	PREPARED BY:	RECOMMENDING APPROVALS:	APPROVED BY:	DRAWN BY:	SHEET NO.
UPGRADING OF ARC BUILDING (C.Y. 2025)	BASEMENT FLOOR PLAN (BLOW-UP) - NATAS CHEMICAL ROOM - PROPOSED EXHAUST STACK (SIDE SECTION) - PROPOSED EXHAUST STACK (FRONT VIEW) - PROPOSED EXHAUST STACK (FRONT VIEW AT CHEMICAL ROOM)	ENGR. ANDREW C. BARRIDA SSRS, ESS ENGR. ROSALINO B. REJAS SSRS, ESS	ENGR. ARTURO F. SALIH ESS, HEAD CHITHO P. FELICIANO, Ph.D. END-USER, HEAD, HPRS NEIL RAYMUND D. GUILLERMO, M. Sc CHIEF, ARD ENGR. HAYDEE M. SOLOMON OIC-CHIEF, NSD VALLERIE ANN I. SAMSON, Ph. D. DEPUTY DIRECTOR	CARLO A. ARCILLA, Ph. D. DIRECTOR	ENGR. C. PELMONTE	M - 10
					CHECKED BY:	PAGE NO. OF TOTAL NO. OF PAGES
					DATE:	57 of 84

GENERAL NOTE: DRAWINGS MAY NOT BE IN SCALE. USE MARKED DIMENSIONS. VERIFY ACTUAL MEASUREMENTS. INFORM THE DESIGN TEAM OF ANY DISCREPANCIES FOUND IN THE DRAWINGS, DOCUMENTS, AND ACTUAL SITE CONDITIONS.

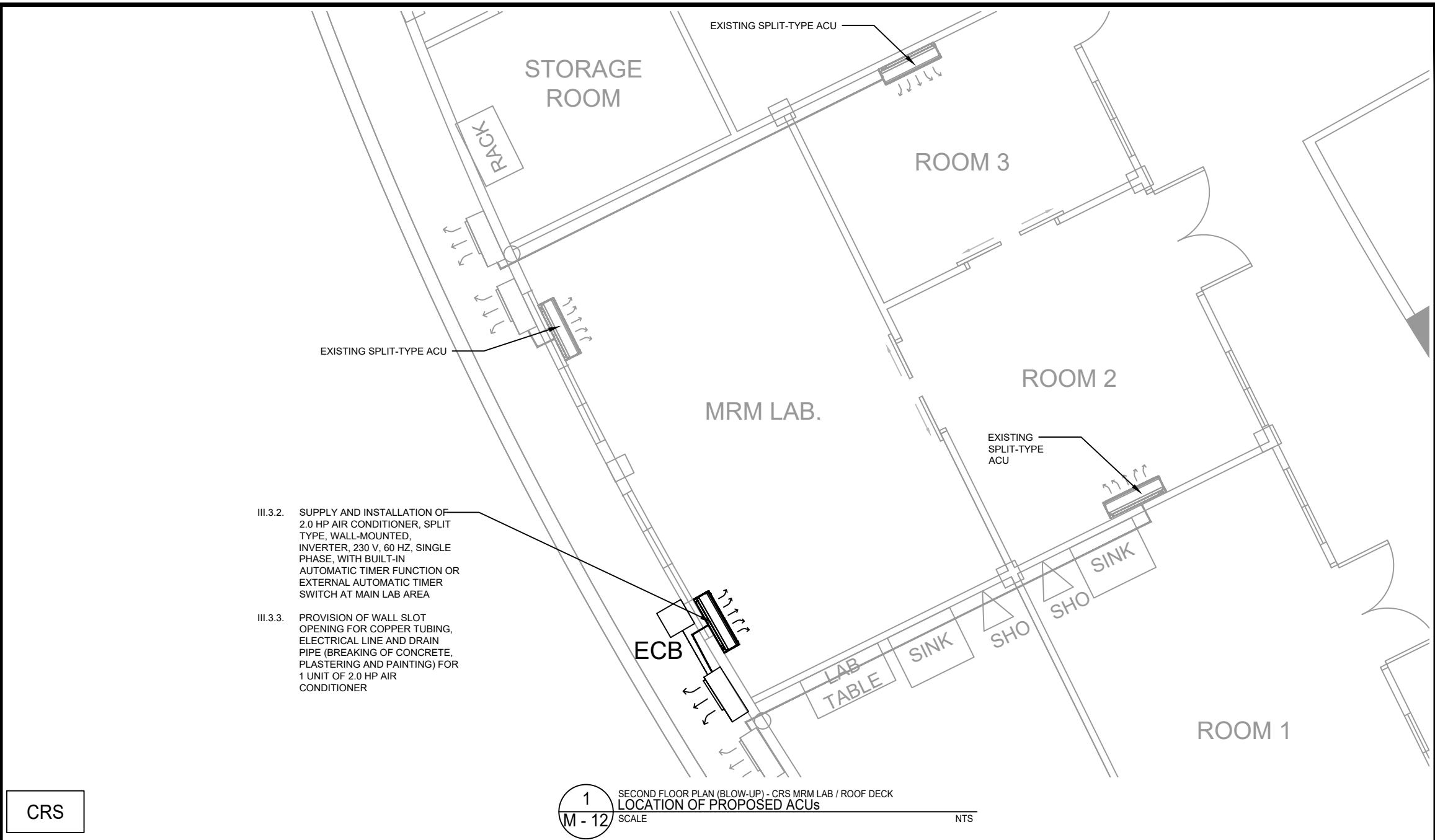


CRS

1
M - 11
GROUND FLOOR PLAN (BLOW-UP) - CRS RBA LAB 1
LOCATION OF PROPOSED ACUs
SCALE NTS

 <p>Republic of the Philippines DEPARTMENT OF SCIENCE AND TECHNOLOGY PHILIPPINE NUCLEAR RESEARCH INSTITUTE COMMONWEALTH AVENUE, DILIMAN, QUEZON CITY</p>	PROJECT TITLE:	SHEET CONTENT/S:	PREPARED BY:	RECOMMENDING APPROVALS:	APPROVED BY:	DRAWN BY:	SHEET NO.
	UPGRADING OF ARC BUILDING (C.Y. 2025)	GROUND FLOOR PLAN (BLOW-UP) - CRS RBA LAB 1 - LOCATION OF PROPOSED ACUs	ENGR. ANDREW C. BARRIDA SSRS, ESS	ENGR. ARTURO F. SALIH ESS, HEAD	CHITHO P. FELICIANO, Ph.D. END-USER, HEAD, HPRS	ENGR. C. PELMONTE	M - 11
			ENGR. ROSALINO B. REJAS SSRS, ESS	NEIL RAYMUND D. GUILLERMO, M. Sc CHIEF, ARD	VALLERIE ANN I. SAMSON, Ph. D. DEPUTY DIRECTOR	CHECKED BY:	
			ENGR. HAYDEE M. SOLOMON OIC-CHIEF, NSD			DATE:	
					CARLO A. ARCILLA, Ph. D. DIRECTOR	PAGE NO. OF TOTAL NO. OF PAGES 58 of 84	

GENERAL NOTE: DRAWINGS MAY NOT BE IN SCALE. USE MARKED DIMENSIONS. VERIFY ACTUAL MEASUREMENTS. INFORM THE DESIGN TEAM OF ANY DISCREPANCIES FOUND IN THE DRAWINGS, DOCUMENTS, AND ACTUAL SITE CONDITIONS.



CRS

Republic of the Philippines
DEPARTMENT OF SCIENCE AND TECHNOLOGY
PHILIPPINE NUCLEAR RESEARCH INSTITUTE
COMMONWEALTH AVENUE, DILIMAN, QUEZON CITY

PROJECT TITLE:
UPGRADING OF ARC BUILDING (C.Y. 2025)

SHEET CONTENT/S:
SECOND FLOOR PLAN (BLOW-UP) - CRS
MRM LAB / ROOF DECK
- LOCATION OF PROPOSED ACUs

PREPARED BY:
ENGR. ANDREW C. BARRIDA
SSRS, ESS
ENGR. ROSALINO B. REJAS
SSRS, ESS

RECOMMENDING APPROVALS:
ENGR. ARTURO F. SALIH
ESS, HEAD
NEIL RAYMUND D. GUILLERMO, M. Sc
CHIEF, ARD
ENGR. HAYDEE M. SOLOMON
OIC-CHIEF, NSD
CHITHO P. FELICIANO, Ph.D.
END-USER, HEAD, HPRS
VALLERIE ANN I. SAMSON, Ph. D.
DEPUTY DIRECTOR

APPROVED BY:
CARLO A. ARCILLA, Ph. D.
DIRECTOR

DRAWN BY:
ENGR. C. PELMONTE
CHECKED BY:
DATE:
SHEET NO.:
M - 12
PAGE NO. OF TOTAL NO. OF PAGES:
59 of 84

III.5.18 SUPPLY AND INSTALLATION OF FUMEHOOD

III.5.15 SUPPLY AND INSTALLATION OF 2.5 HP AIR CONDITIONER, SPLIT TYPE, WALL-MOUNTED, INVERTER, 230 V, 60 HZ, SINGLE PHASE, WITH BUILT-IN AUTOMATIC TIMER FUNCTION

III.5.16 PROVISION OF WALL SLOT OPENING FOR COPPER TUBING, ELECTRICAL LINE AND DRAIN PIPE (BREAKING OF CONCRETE, PLASTERING AND PAINTING) FOR 2 UNITS 2.5 HP AIR CONDITIONER

III.5.5 SUPPLY AND INSTALLATION OF 1.0 HP AIR CONDITIONER, SPLIT TYPE, WALL-MOUNTED, INVERTER, 230 V, 60 HZ, SINGLE PHASE, WITH BUILT-IN AUTOMATIC TIMER FUNCTION

III.5.6 PROVISION OF WALL SLOT OPENING FOR COPPER TUBING, ELECTRICAL LINE AND DRAIN PIPE (BREAKING OF CONCRETE, PLASTERING AND PAINTING) FOR 1 UNIT 1.0 HP AIR CONDITIONER

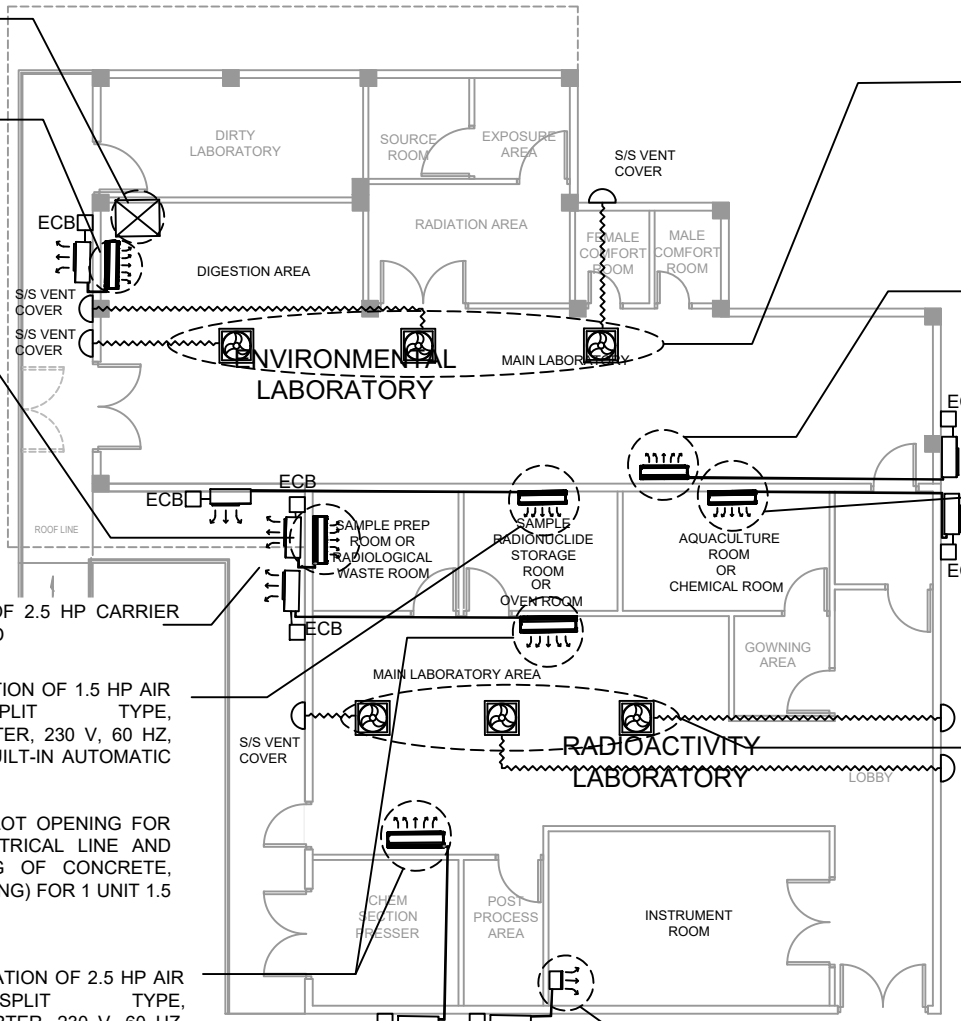
III.5.17 RELOCATION OF EXISTING ACCU OF 2.5 HP CARRIER BRAND, SPLIT TYPE, WALL-MOUNTED

III.5.7 SUPPLY AND INSTALLATION OF 1.5 HP AIR CONDITIONER, SPLIT TYPE, WALL-MOUNTED, INVERTER, 230 V, 60 HZ, SINGLE PHASE, WITH BUILT-IN AUTOMATIC TIMER FUNCTION

III.5.8 PROVISION OF WALL SLOT OPENING FOR COPPER TUBING, ELECTRICAL LINE AND DRAIN PIPE (BREAKING OF CONCRETE, PLASTERING AND PAINTING) FOR 1 UNIT 1.5 HP AIR CONDITIONER

III.5.3 SUPPLY AND INSTALLATION OF 2.5 HP AIR CONDITIONER, SPLIT TYPE, WALL-MOUNTED, INVERTER, 230 V, 60 HZ, SINGLE PHASE, WITH BUILT-IN AUTOMATIC TIMER FUNCTION

III.5.4 PROVISION OF WALL SLOT OPENING FOR COPPER TUBING, ELECTRICAL LINE AND DRAIN PIPE (BREAKING OF CONCRETE, PLASTERING AND PAINTING) FOR 2 UNITS 2.5 HP AIR CONDITIONER



III.5.13 SUPPLY AND INSTALLATION OF 150 CFM EXHAUST FAN, CEILING-MOUNTED, 12" GRILLE WITH 4" Ø ROUND FLEXIBLE ALUMINUM DUCT, 4" Ø PVC PIPE WALL STUB-OUT, HANGERS AND STAINLESS STEEL VENT COVER

III.5.14 PROVISION OF WALL SLOT OPENING FOR THREE (3) - 4" Ø PVC WALL STUB OUT (BREAKING OF CONCRETE, RESTORATION & PAINTING)

III.5.15 SUPPLY AND INSTALLATION OF 2.5 HP AIR CONDITIONER, SPLIT TYPE, WALL-MOUNTED, INVERTER, 230 V, 60 HZ, SINGLE PHASE, WITH BUILT-IN AUTOMATIC TIMER FUNCTION

III.5.16 PROVISION OF WALL SLOT OPENING FOR COPPER TUBING, ELECTRICAL LINE AND DRAIN PIPE (BREAKING OF CONCRETE, PLASTERING AND PAINTING) FOR 2 UNITS 2.5 HP AIR CONDITIONER

III.5.9 SUPPLY AND INSTALLATION OF 1.5 HP AIR CONDITIONER, SPLIT TYPE, WALL-MOUNTED, INVERTER, 230 V, 60 HZ, SINGLE PHASE, WITH BUILT-IN AUTOMATIC TIMER FUNCTION

III.5.10 PROVISION OF WALL SLOT OPENING FOR COPPER TUBING, ELECTRICAL LINE AND DRAIN PIPE (BREAKING OF CONCRETE, PLASTERING AND PAINTING) FOR 1 UNIT 1.5 HP AIR CONDITIONER

III.5.11 SUPPLY AND INSTALLATION OF 150 CFM EXHAUST FAN, CEILING-MOUNTED, 12" GRILLE WITH 4" Ø ROUND FLEXIBLE ALUMINUM DUCT, 4" Ø PVC PIPE WALL STUB-OUT, HANGERS AND STAINLESS STEEL VENT COVER

III.5.12 PROVISION OF WALL SLOT OPENING FOR THREE (3) - 4" Ø PVC PIPE WALL STUB OUT (BREAKING OF CONCRETE, RESTORATION & PAINTING)


III.5.1 SUPPLY AND INSTALLATION OF 3 TR (~4 HP) AIR CONDITIONER, SPLIT TYPE, FLOOR-MOUNTED, INVERTER, WITH BUILT-IN AUTOMATIC TIMER FUNCTION

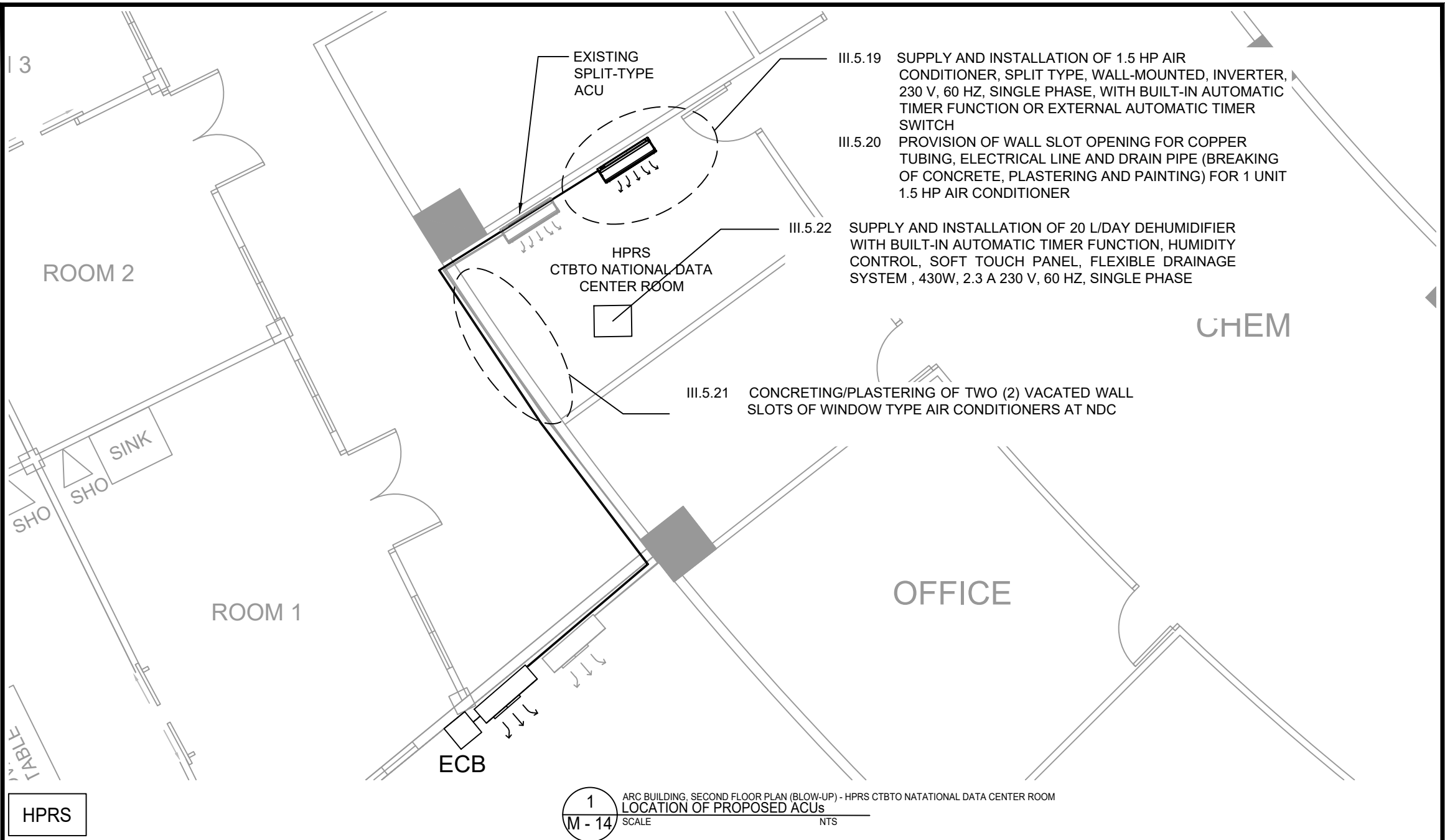
III.5.2 PROVISION OF WALL SLOT OPENING FOR COPPER TUBING, ELECTRICAL LINE AND DRAIN PIPE (BREAKING OF CONCRETE, PLASTERING AND PAINTING) FOR 1 UNIT 3 TR (~4 HP) AIR CONDITIONER

ROTATED COUNTER CLOCKWISE

HPRS


1 ENVILAB, GROUND FLOOR PLAN (BLOW-UP) - HPRS PHASE 1 & 2
M - 13 LOCATION OF PROPOSED ACUs, FUMEHOOD, AND EXHAUST FANS
SCALE NTS

 Republic of the Philippines DEPARTMENT OF SCIENCE AND TECHNOLOGY PHILIPPINE NUCLEAR RESEARCH INSTITUTE COMMONWEALTH AVENUE, DILIMAN, QUEZON CITY	PROJECT TITLE:	SHEET CONTENT/S:	PREPARED BY:	RECOMMENDING APPROVALS:	APPROVED BY:	DRAWN BY:	SHEET NO.	
	UPGRADING OF ARC BUILDING (C.Y. 2025)	ENVILAB, GROUND FLOOR PLAN (BLOW-UP) - HPRS PHASE 1 & 2 - LOCATION OF PROPOSED ACUs, FUMEHOOD, AND EXHAUST FANS	ENGR. ANDREW C. BARRIDA SSRS, ESS	ENGR. ROSALINO B. REJAS SSRS, ESS	ENGR. ARTURO F. SALIH ESS, HEAD CHITHO P. FELICIANO, Ph.D. END-USER, HEAD, HPRS NEIL RAYMUND D. GUILLERMO, M. Sc CHIEF, ARD	ENGR. HAYDEE M. SOLOMON OIC-CHIEF, NSD VALLERIE ANN I. SAMSON, Ph. D. DEPUTY DIRECTOR	ENGR. C. PELMONTE	M - 13
							CHECKED BY:	
							DATE:	
						CARLO A. ARCILLA, Ph. D. DIRECTOR	PAGE NO. OF TOTAL NO. OF PAGES 60 OF 84	



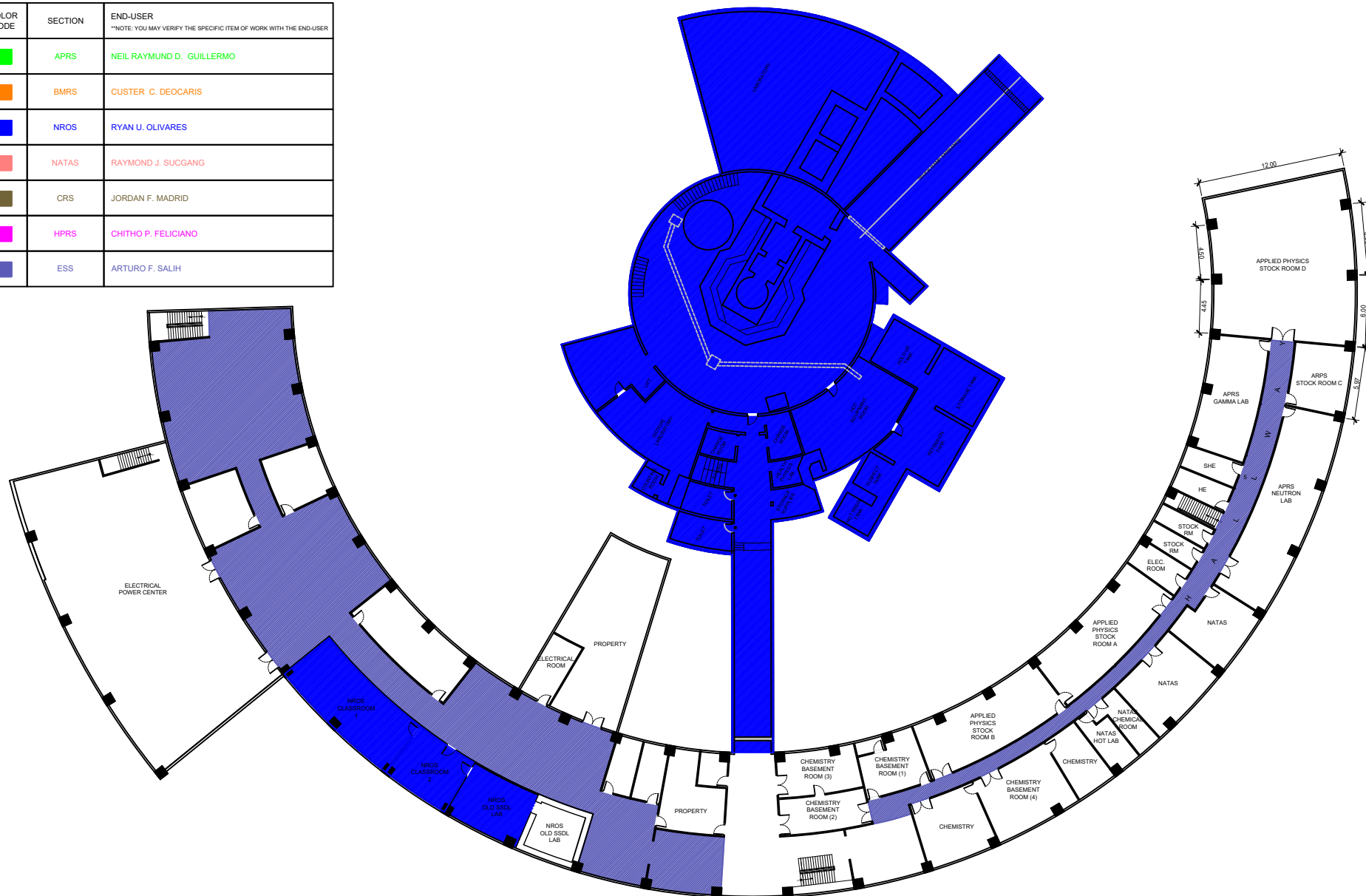
1
M - 14 ARC BUILDING, SECOND FLOOR PLAN (BLOW-UP) - HPRS CTBTO NATATIONAL DATA CENTER ROOM
 LOCATION OF PROPOSED ACUs
 SCALE NTS

HPRS

 <p>Republic of the Philippines DEPARTMENT OF SCIENCE AND TECHNOLOGY PHILIPPINE NUCLEAR RESEARCH INSTITUTE COMMONWEALTH AVENUE, DILIMAN, QUEZON CITY</p>	PROJECT TITLE:	SHEET CONTENT/S:	PREPARED BY:	RECOMMENDING APPROVALS:	APPROVED BY:	DRAWN BY:	SHEET NO.
	UPGRADING OF ARC BUILDING (C.Y. 2025)	ARC BUILDING, SECOND FLOOR PLAN (BLOW-UP) - HPRS CTBTO NATATIONAL DATA CENTER ROOM - LOCATION OF PROPOSED ACUs	<u>ENGR. ANDREW C. BARRIDA</u> <small>SSRS, ESS</small>	<u>ENGR. ARTURO F. SALIH</u> <small>ESS, HEAD</small>	<u>CHITHO P. FELICIANO, Ph.D.</u> <small>END-USER, HEAD, HPRS</small>	<u>ENGR. C. PELMONTE</u>	M - 14
			<u>ENGR. ROSALINO B. REJAS</u> <small>SSRS, ESS</small>	<u>NEIL RAYMUND D. GUILLERMO, M. Sc</u> <small>CHIEF, ARD</small>	<u>CARLO A. ARCILLA, Ph. D.</u> <small>DIRECTOR</small>	CHECKED BY: DATE:	
				<u>ENGR. HAYDEE M. SOLOMON</u> <small>OIC-CHIEF, NSD</small>	<u>VALLERIE ANN I. SAMSON, Ph. D.</u> <small>DEPUTY DIRECTOR</small>		


GENERAL NOTE: DRAWINGS MAY NOT BE IN SCALE. USE MARKED DIMENSIONS. VERIFY ACTUAL MEASUREMENTS. INFORM THE DESIGN TEAM OF ANY DISCREPANCIES FOUND IN THE DRAWINGS, DOCUMENTS, AND ACTUAL SITE CONDITIONS.

COLOR CODE	SECTION	END-USER **NOTE: YOU MAY VERIFY THE SPECIFIC ITEM OF WORK WITH THE END-USER
■	APRS	NEIL RAYMUND D. GUILLERMO
■	BMRS	CUSTER C. DEOCARIS
■	NROS	RYAN U. OLIVARES
■	NATAS	RAYMOND J. SUCGANG
■	CRS	JORDAN F. MADRID
■	HPRS	CHITHO P. FELICIANO
■	ESS	ARTURO F. SALIH



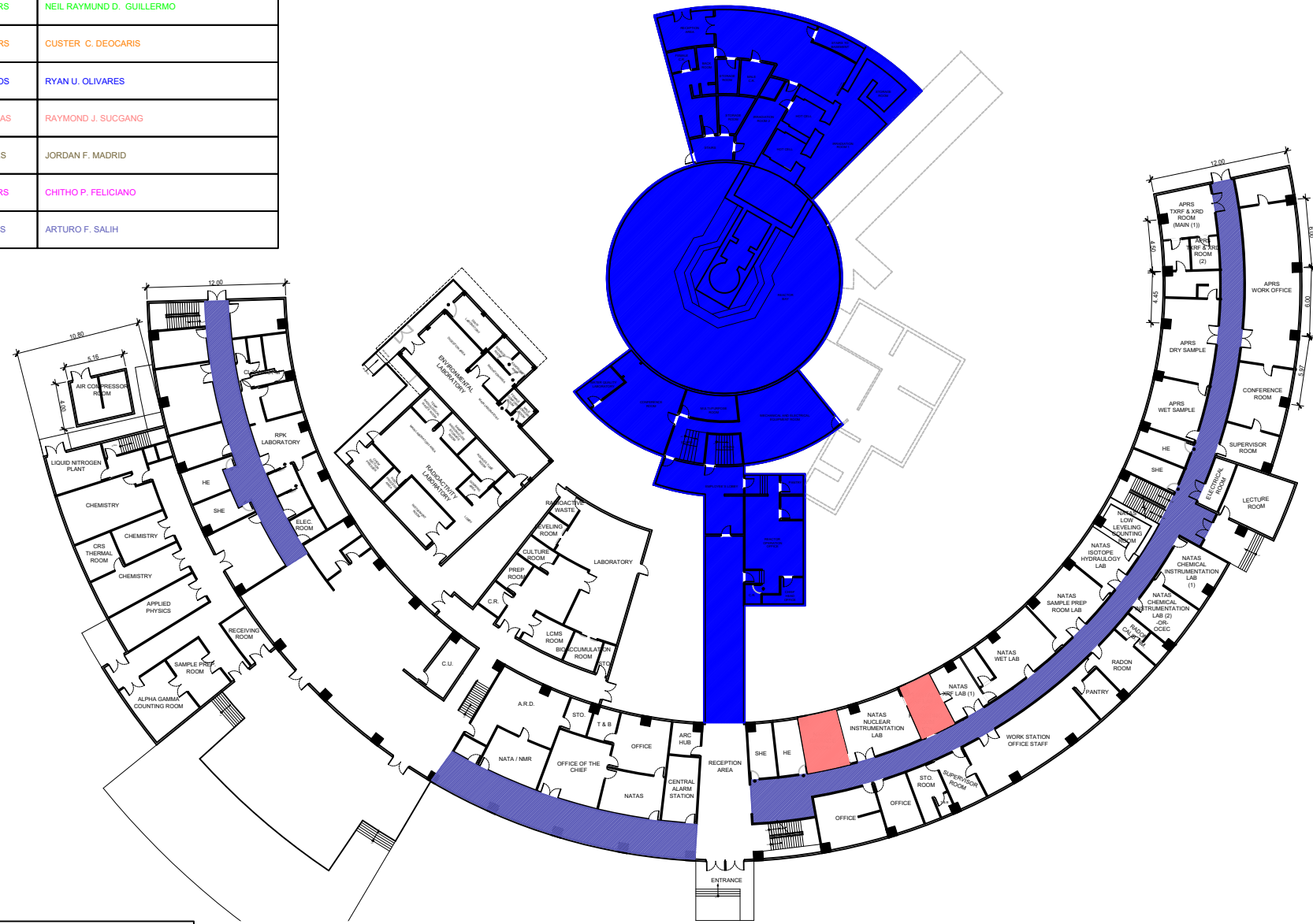
NOTE:
ALL HIGHLIGHTED AREAS MAINLY PERTAINS TO ELECTRICAL PROGRAM OF WORKS. KINDLY REFER TO THE OTHER DRAWING PLANS FOR THEIR RESPECTIVE PROGRAM OF WORKS

1
E - 01 ARC BUILDING
BASEMENT FLOOR PLAN
SCALE _____ NTS

 <p>Republic of the Philippines DEPARTMENT OF SCIENCE AND TECHNOLOGY PHILIPPINE NUCLEAR RESEARCH INSTITUTE COMMONWEALTH AVENUE, DILIMAN, QUEZON CITY</p>	PROJECT TITLE:	SHEET CONTENT/S:	PREPARED BY:	RECOMMENDING APPROVALS:	APPROVED BY:	DRAWN BY:	SHEET NO.
	UPGRADING OF ARC BUILDING (C.Y. 2025)	ARC BUILDING - BASEMENT FLOOR PLAN	ENGR. ANDREW C. BARRIDA SSRS, ESS	ENGR. ARTURO F. SALIH ESS, HEAD CHITHO P. FELICIANO, Ph.D. END-USER, HEAD, HPRS	ENGR. C. PELMONTE	E - 01	
			ENGR. ROSALINO B. REJAS SSRS, ESS	NEIL RAYMUND D. GUILLERMO, M. Sc CHIEF, ARD	CARLO A. ARCILLA, Ph. D. DIRECTOR	CHECKED BY:	PAGE NO. OF TOTAL NO. OF PAGES
			ENGR. HAYDEE M. SOLOMON OIC-CHIEF, NSD	VALLERIE ANN I. SAMSON, Ph. D. DEPUTY DIRECTOR	DATE:	62 of 84	

GENERAL NOTE: DRAWINGS MAY NOT BE IN SCALE. USE MARKED DIMENSIONS. VERIFY ACTUAL MEASUREMENTS. INFORM THE DESIGN TEAM OF ANY DISCREPANCIES FOUND IN THE DRAWINGS, DOCUMENTS, AND ACTUAL SITE CONDITIONS.

COLOR CODE	SECTION	END-USER **NOTE: YOU MAY VERIFY THE SPECIFIC ITEM OF WORK WITH THE END-USER
■	APRS	NEIL RAYMUND D. GUILLERMO
■	BMRS	CUSTER C. DEOCARIS
■	NROS	RYAN U. OLIVARES
■	NATAS	RAYMOND J. SUCGANG
■	CRS	JORDAN F. MADRID
■	HPRS	CHITHO P. FELICIANO
■	ESS	ARTURO F. SALIH



NOTE:
ALL HIGHLIGHTED AREAS MAINLY PERTAINS TO ELECTRICAL PROGRAM OF WORKS. KINDLY REFER TO THE OTHER DRAWING PLANS FOR THEIR RESPECTIVE PROGRAM OF WORKS

1
E - 02 ARC BUILDING GROUND FLOOR PLAN SCALE NTS

Republic of the Philippines
DEPARTMENT OF SCIENCE AND TECHNOLOGY
PHILIPPINE NUCLEAR RESEARCH INSTITUTE
COMMONWEALTH AVENUE, DILIMAN, QUEZON CITY

PROJECT TITLE:
UPGRADING OF ARC BUILDING (C.Y. 2025)

SHEET CONTENT/S:
ARC BUILDING - GROUND FLOOR PLAN

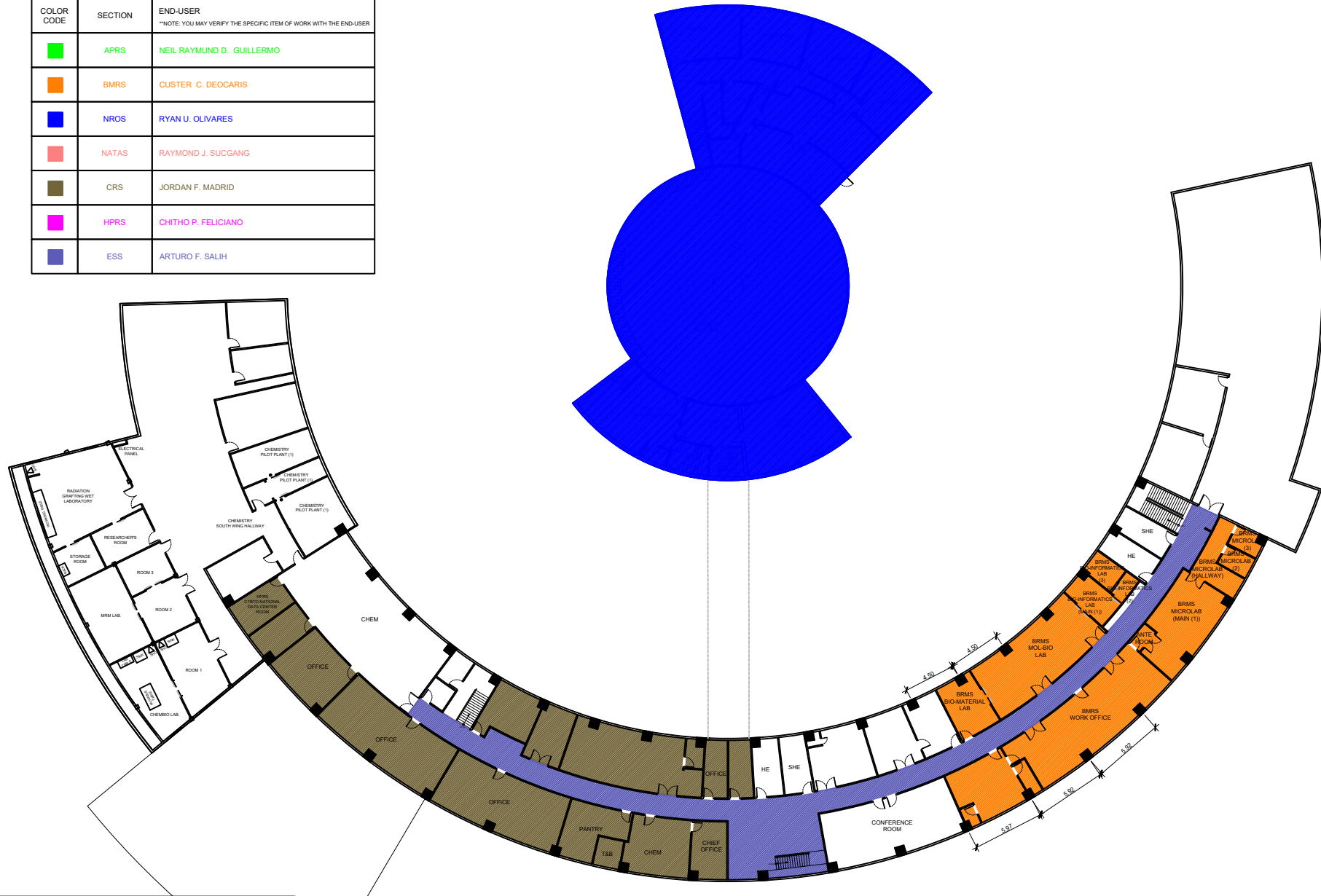
PREPARED BY:
ENGR. ANDREW C. BARRIDA
SSRS, ESS
ENGR. ROSALINO B. REJAS
SSRS, ESS

RECOMMENDING APPROVALS:
ENGR. ARTURO F. SALIH
ESS, HEAD
NEIL RAYMUND D. GUILLERMO, M. Sc
CHIEF, ARD
ENGR. HAYDEE M. SOLOMON
OIC-CHIEF, NSD
CHITHO P. FELICIANO, Ph.D.
END-USER, HEAD, HPRS
VALLERIE ANN I. SAMSON, Ph. D.
DEPUTY DIRECTOR

APPROVED BY:
CARLO A. ARCILLA, Ph. D.
DIRECTOR

DRAWN BY:
ENGR. C. PELMONTE
CHECKED BY:
DATE:
SHEET NO.:
E - 02
PAGE NO. OF TOTAL NO. OF PAGES:
63 of 84

COLOR CODE	SECTION	END-USER **NOTE: YOU MAY VERIFY THE SPECIFIC ITEM OF WORK WITH THE END-USER
■	APRS	NEIL RAYMUND D. GUILLERMO
■	BMRS	CUSTER C. DEOCARIS
■	NROS	RYAN U. OLIVARES
■	NATAS	RAYMOND J. SUCGANG
■	CRS	JORDAN F. MADRID
■	HPRS	CHITHO P. FELICIANO
■	ESS	ARTURO F. SALIH



NOTE:
ALL HIGHLIGHTED AREAS MAINLY PERTAINS TO ELECTRICAL PROGRAM OF WORKS. KINDLY REFER TO THE OTHER DRAWING PLANS FOR THEIR RESPECTIVE PROGRAM OF WORKS

1
E - 03 ARC BUILDING
SECOND FLOOR PLAN
SCALE NTS

Republic of the Philippines
DEPARTMENT OF SCIENCE AND TECHNOLOGY
PHILIPPINE NUCLEAR RESEARCH INSTITUTE
COMMONWEALTH AVENUE, DILIMAN, QUEZON CITY

PROJECT TITLE:	UPGRADING OF ARC BUILDING (C.Y. 2025)
-----------------------	---------------------------------------

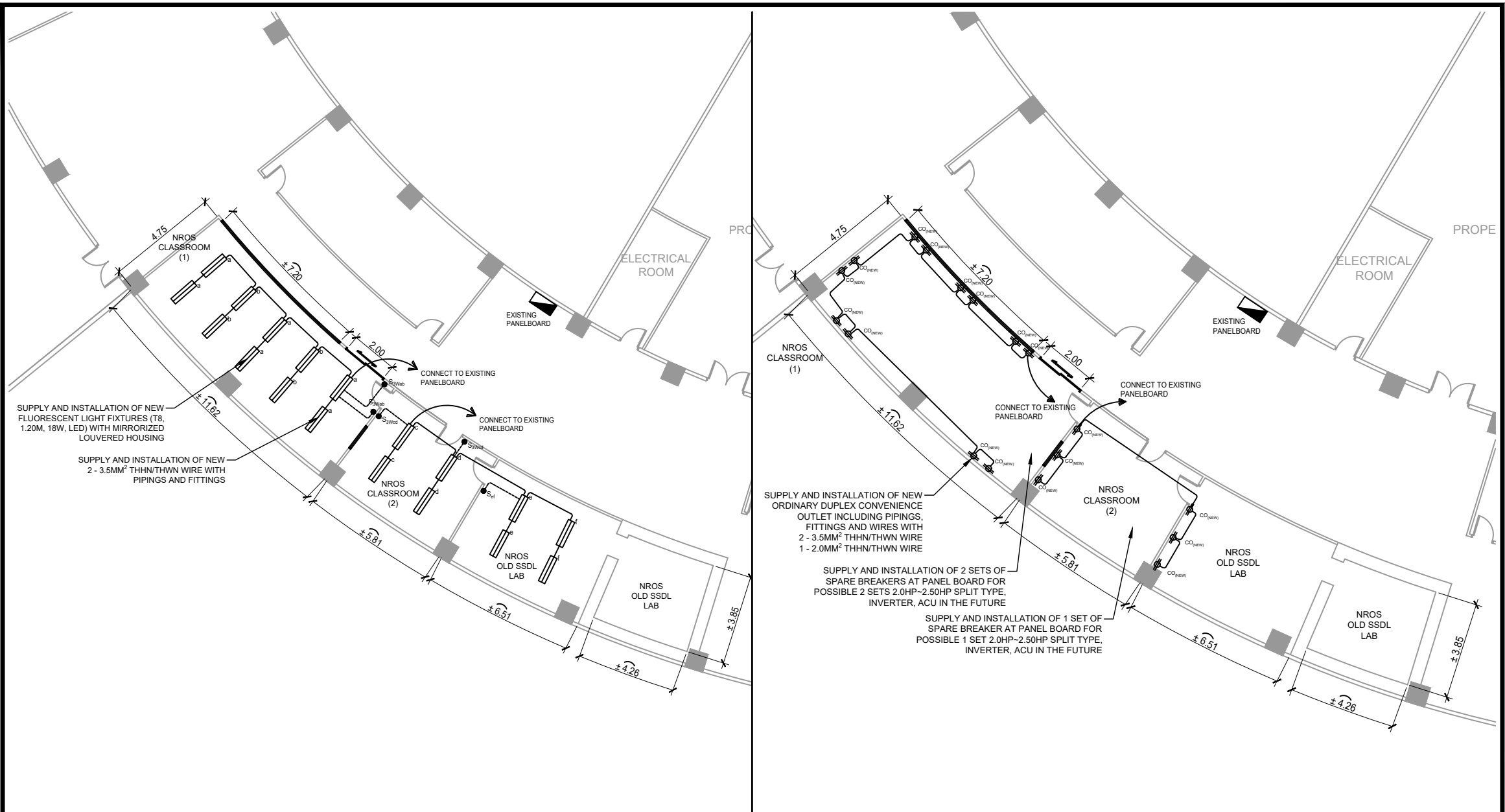
SHEET CONTENT/S:	ARC BUILDING - SECOND FLOOR PLAN
-------------------------	-------------------------------------

PREPARED BY:	ENGR. ANDREW C. BARRIDA SSRS, ESS
	ENGR. ROSALINO B. REJAS SSRS, ESS

RECOMMENDING APPROVALS:	ENGR. ARTURO F. SALIH ESS, HEAD	CHITHO P. FELICIANO, Ph.D. END-USER, HEAD, HPRS
	ENGR. HAYDEE M. SOLOMON OIC-CHIEF, NSD	VALLERIE ANN I. SAMSON, Ph. D. DEPUTY DIRECTOR

APPROVED BY:	CARLO A. ARCILLA, Ph. D. DIRECTOR
---------------------	--------------------------------------

DRAWN BY:	ENGR. C. PELMONTE	SHEET NO.	E - 03
CHECKED BY:		PAGE NO. OF TOTAL NO. OF PAGES	64 of 84
DATE:			



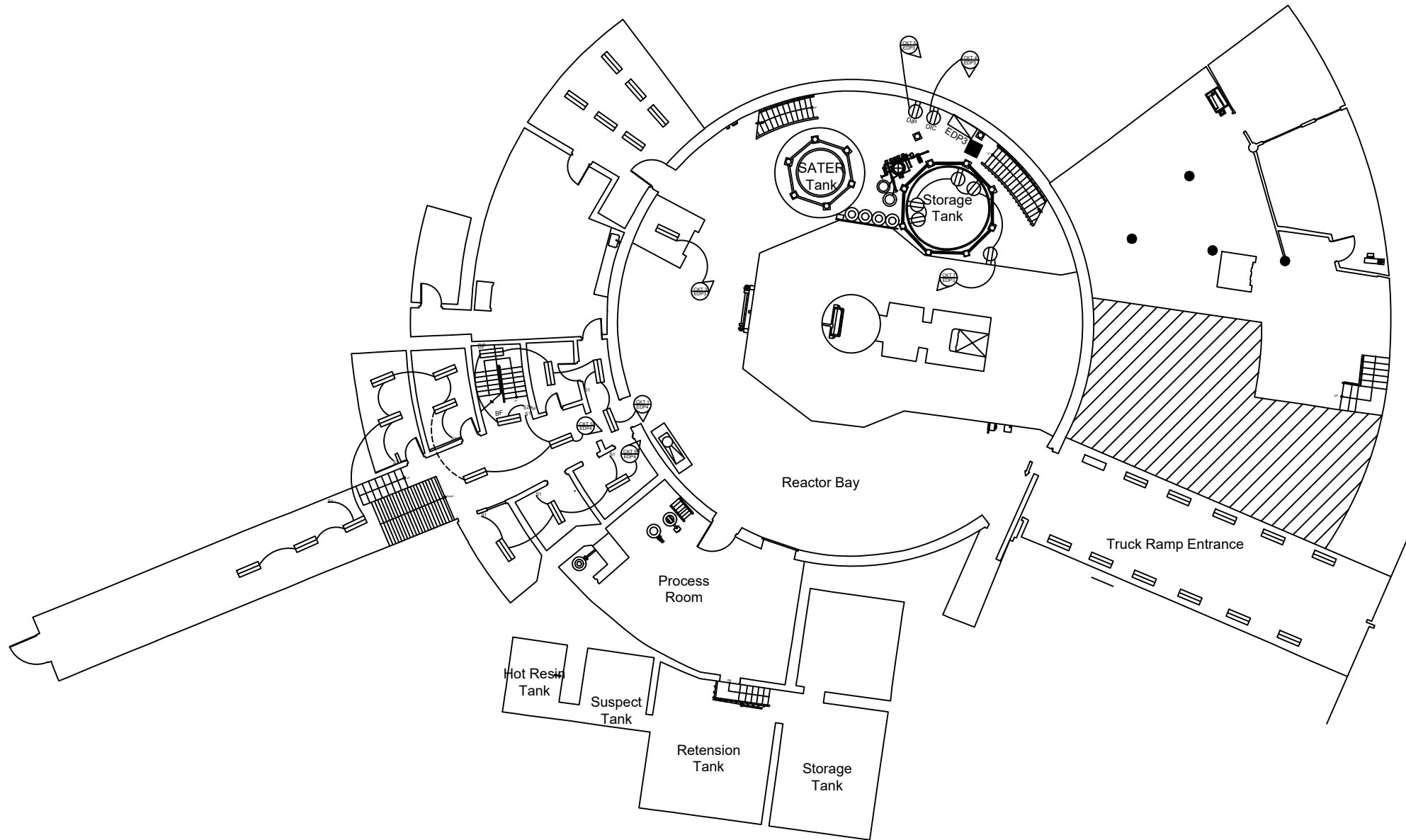
NROS

1
E - 04 BASEMENT FLOOR, PROPOSED CLASSROOM (BLOW-UP)
 LIGHTING LAYOUT
 SCALE NTS

2
E - 04 BASEMENT FLOOR, PROPOSED CLASSROOM (BLOW-UP)
 POWER LAYOUT
 SCALE NTS


<p>Republic of the Philippines DEPARTMENT OF SCIENCE AND TECHNOLOGY PHILIPPINE NUCLEAR RESEARCH INSTITUTE COMMONWEALTH AVENUE, DILIMAN, QUEZON CITY</p>	PROJECT TITLE:	SHEET CONTENT/S:	PREPARED BY:	RECOMMENDING APPROVALS:	APPROVED BY:	DRAWN BY:	SHEET NO.
	UPGRADING OF ARC BUILDING (C.Y. 2025)	BASEMENT FLOOR, PROPOSED CLASSROOM (BLOW-UP) - LIGHTING LAYOUT - POWER LAYOUT	<u>ENGR. ANDREW C. BARRIDA</u> SSRS, ESS <u>ENGR. ROSALINO B. REJAS</u> SSRS, ESS	ENGR. ARTURO F. SALIH ESS, HEAD CHITHO P. FELICIANO, Ph.D. END-USER, HEAD, HPRS NEIL RAYMUND D. GUILLERMO, M. Sc CHIEF, ARD	<u>CARLO A. ARCILLA, Ph. D.</u> DIRECTOR	ENGR. C. PELMONTE CHECKED BY: DATE:	E - 04 PAGE NO. OF TOTAL NO. OF PAGES 65 of 84
				ENGR. HAYDEE M. SOLOMON OIC-CHIEF, NSD VALLERIE ANN I. SAMSON, Ph. D. DEPUTY DIRECTOR			

GENERAL NOTE: DRAWINGS MAY NOT BE IN SCALE. USE MARKED DIMENSIONS. VERIFY ACTUAL MEASUREMENTS. INFORM THE DESIGN TEAM OF ANY DISCREPANCIES FOUND IN THE DRAWINGS, DOCUMENTS, AND ACTUAL SITE CONDITIONS.



NROS

1 BASEMENT FLOOR, REACTOR BUILDING (BLOW-UP)
 E - 05 LIGHTING LAYOUT
 SCALE NTS

 Republic of the Philippines DEPARTMENT OF SCIENCE AND TECHNOLOGY PHILIPPINE NUCLEAR RESEARCH INSTITUTE COMMONWEALTH AVENUE, DILIMAN, QUEZON CITY	PROJECT TITLE:	SHEET CONTENT/S:	PREPARED BY:	RECOMMENDING APPROVALS:	APPROVED BY:	DRAWN BY:	SHEET NO.	
	UPGRADING OF ARC BUILDING (C.Y. 2025)	BASEMENT FLOOR, REACTOR BUILDING (BLOW-UP) - LIGHTING LAYOUT	<u>ENGR. ANDREW C. BARRIDA</u> <small>SSRS, ESS</small>	<u>ENGR. ARTURO F. SALIH</u> <small>ESS, HEAD</small> <u>NEIL RAYMUND D. GUILLERMO, M. Sc</u> <small>CHIEF, ARD</small>	<u>CHITHO P. FELICIANO, Ph.D.</u> <small>END-USER, HEAD, HPRS</small>	<u>ENGR. C. PELMONTE</u> <small>CHECKED BY:</small>	E - 05	
			<u>ENGR. ROSALINO B. REJAS</u> <small>SSRS, ESS</small>	<u>ENGR. HAYDEE M. SOLOMON</u> <small>OIC-CHIEF, NSD</small>	<u>VALLERIE ANN I. SAMSON, Ph. D.</u> <small>DEPUTY DIRECTOR</small>	<u>CARLO A. ARCILLA, Ph. D.</u> <small>DIRECTOR</small>	<small>DATE:</small> <small>PAGE NO. OF TOTAL NO. OF PAGES</small>	66 of 84

GENERAL NOTE: DRAWINGS MAY NOT BE IN SCALE. USE MARKED DIMENSIONS. VERIFY ACTUAL MEASUREMENTS. INFORM THE DESIGN TEAM OF ANY DISCREPANCIES FOUND IN THE DRAWINGS, DOCUMENTS, AND ACTUAL SITE CONDITIONS.