



Republic of the Philippines  
Department of Science and Technology

**PHILIPPINE NUCLEAR RESEARCH INSTITUTE**



# **Compendium of Training Statistics (2011 – 2016)**

COMPENDIUM OF TRAINING STATISTICS (2011 – 2016)

Copyright © 2017 Philippine Nuclear Research Institute (PNRI)

This compendium published annually by PNRI was developed by the Nuclear Training Center, Technology Diffusion Division. This is intended for general use and circulation. Appropriate citation is required for use of any information contained in this publication. Any part of this publication should not be reproduced, recopied, lend or repackaged for other parties for any commercial purposes without written permission from PNRI. Any information derived from the manipulation of data contained in this publication will no longer be the responsibility of PNRI. For technical inquiries, please contact (632) 929 6011 to 19 local 236 or email [ntc@pnri.dost.gov.ph](mailto:ntc@pnri.dost.gov.ph)

ISSN: 2617 788X

Published by the  
Philippine Nuclear Research Institute  
Commonwealth Ave., Diliman Quezon City Philippines

December 2017

## **Foreword**

The Philippine Nuclear Research Institute (PNRI) is the only Philippine government agency mandated to promote nuclear science and technology in the country. This educational mandate is an essential part in PNRI's effort to engage the public in the discipline of nuclear science and technology, together with the maintenance of a vigorous research program and the building and operation of state of the art research facilities.

To achieve this education mandate, the PNRI, through the Nuclear Training Center (NTC), annually conducts training courses for government agencies, private companies, various industries, medical institutions, the academe, and the general public on the beneficial uses of nuclear science and technology.

This maiden publication provides data users with timely, accurate and reliable information on training related statistics which can serve as inputs for responsive professional program developments or education outreach activities.

This publication is available in soft copy and can be accessed and downloaded in portable data format (pdf) from our website at <http://www.pnri.dost.gov.ph>. We will greatly appreciate your comments/suggestions to further improve this publication.

## **Data Highlights**

- There is a notable increase in the total number of training courses being conducted by the Nuclear Training Center per year from 2011 to 2016. Along with the increase in the frequency of training courses conducted is the increase in the total number of participants from 2011 - 2016. Linear regression analysis yields about 9% increase in total number of participants per year.
- A notable increase in the number of requested training courses (on site) was observed from 2011 to 2016. The most requested training course on site is the Radiation Safety Course – Sealed Sources in Industrial Devices (RSC-ID). Consequently, it recorded the highest number of participants, more than 100 per year, from 2011 to 2016.
- Majority of the training courses provided by the Nuclear Training Center received a rating of “Very Satisfactory” to “Outstanding” as evaluated by the participants of the courses.
- More than 60% of the total number of participants in training courses per year are males.
- More than 60% of institutions affiliated with the participants in the training courses are from private institutions/company.
- The frequency of regular courses offered by the Center remains steady from 2011 – 2016.
- There is a notable increase in the number of on-the-job trainees accepted at various sections from 2012 to 2016. Linear regression analysis yields about 23% increase in the number of trainees for the years 2012 – 2016.
- There is an observed decrease in the percentage of female trainees accepted in the OJT program from 2012 to 2016.
- About 30% - 50% of the total number of trainees accepted per year from 2012 – 2016 were detailed to sections in the Atomic Research Division.
- About 80% of the total number of trainees accepted from 2012 – 2016 were from sending institutions located in the National Capital Region (NCR). About 60% of these institutions are state universities and colleges.

## Contents

<b>Foreword</b> .....	<b>1</b>
<b>Data Highlights</b> .....	<b>2</b>
<b>Contents</b> .....	<b>3</b>
<b>List of Tables</b> .....	<b>4</b>
<b>List of Figures</b> .....	<b>6</b>
<b>TRAINING COURSES</b> .....	<b>8</b>
<b>1. Summary of Regular and Special Training Courses Conducted from 2011 – 2016</b> .....	<b>8</b>
<b>2. Evaluation Results of Trainings conducted from 2011 – 2016</b> .....	<b>13</b>
<b>3. Comments and Recommendations on Training Courses conducted from 2011 – 2016 ...</b>	<b>19</b>
<b>ON THE JOB TRAINING PROGRAM</b> .....	<b>25</b>

## List of Tables

Table 1. <i>List of regular courses offered annually.....</i>	8
Table 2. <i>List of Special Courses requested by companies from 2011 - 2016 .....</i>	8
Table 3. <i>Total number of training courses conducted per year from 2011 to 2016.....</i>	9
Table 4. <i>Total number of participants for each training course conducted per year from 2011 to 2016.....</i>	10
Table 5. <i>Total number of male and female participants trained per year from 2011 - 2016</i>	11
Table 6. <i>Total number of government and private institutions served in the trainings conducted from 2011 - 2016.....</i>	11
Table 7. <i>Total number of regular and requested trainings per year from 2011 – 2016 and corresponding venues .....</i>	12
Table 8. <i>Overall average rating of training courses conducted in 2011. Components of evaluation includes (a) Program of Activities, (b) Materials, (c) Program Objectives, (d) Venue, and (e) Content and Performance. Raters used a 5-point scale to indicate their agreement to statements in the evaluation questionnaire. ....</i>	13
Table 9. <i>Overall average rating of training courses conducted in 2012. Components of evaluation includes (a) Program of Activities, (b) Materials, (c) Program Objectives, (d) Venue, and (e) Content and Performance. Raters used a 5-point scale to indicate their agreement to statements in the evaluation questionnaire. ....</i>	14
Table 10. <i>Overall average rating of training courses conducted in 2013. Components of evaluation includes (a) Program of Activities, (b) Materials, (c) Program Objectives, (d) Venue, and (e) Content and Performance. Raters used a 5-point scale to indicate their agreement to statements in the evaluation questionnaire. ....</i>	15
Table 11. <i>Overall average rating of training courses conducted in 2014. Components of evaluation includes (a) Program of Activities, (b) Materials, (c) Program Objectives, (d) Venue, and (e) Content and Performance. Raters used a 5-point scale to indicate their agreement to statements in the evaluation questionnaire. ....</i>	16
Table 12. <i>Overall average rating of training courses conducted in 2015. Components of evaluation includes (a) Program of Activities, (b) Materials, (c) Program Objectives, (d) Venue, and (e) Content and Performance. Raters used a 5-point scale to indicate their agreement to statements in the evaluation questionnaire. ....</i>	17
Table 13. <i>Overall average rating of training courses conducted in 2016. Components of evaluation includes (a) Program of Activities, (b) Materials, (c) Program Objectives, (d)</i>	

<i>Venue, and (e) Content and Performance. Raters used a 5-point scale to indicate their agreement to statements in the evaluation questionnaire. ....</i>	18
Table 14. <i>Distribution of participant responses on “comments and recommendations” regarding the conduct or schedule of training courses conducted in 2011. ....</i>	19
Table 15. <i>Distribution of participant responses on “comments and recommendations” regarding the conduct or schedule of training courses conducted in 2012. ....</i>	20
Table 16. <i>Distribution of participant responses on “comments and recommendations” regarding the conduct or schedule of training courses conducted in 2013. ....</i>	21
Table 17. <i>Distribution of participant responses on “comments and recommendations” regarding the conduct or schedule of training courses conducted in 2014. ....</i>	22
Table 18. <i>Distribution of participant responses on “comments and recommendations” regarding the conduct or schedule of training courses conducted in 2015. ....</i>	23
Table 19. <i>Distribution of participant responses on “comments and recommendations” regarding the conduct or schedule of training courses conducted in 2016. ....</i>	24
Table 20. <i>Number of trainees accepted per year in the different divisions and sections from 2012 - 2016. ....</i>	25
Table 21. <i>Total number of male and female trainees accepted in the OJT program from 2012 - 2016. ....</i>	29
Table 22. <i>Total number of accepted trainees affiliated to government or private schools from 2012 - 2016. ....</i>	30
Table 23. <i>Number of public and private schools affiliated to accepted trainees from 2012 - 2016. ....</i>	30
Table 25. <i>Classification of accepted trainee according to fields of study for the year 2012 - 2016. ....</i>	31
Table 24. <i>Frequency of accepted trainees per school or university from 2012 - 2016. ....</i>	32
Table 26. <i>Frequency of trainees per number of hours rendered in the OJT program for years 2012 - 2016. ....</i>	34

## List of Figures

Figure 1. <i>Number of training courses conducted per year from 2011 to 2016</i> .....	9
Figure 2. <i>Total number of participants per training course conducted from 2011 to 2016</i>	10
Figure 3. <i>Percentage of total number of male and female participants in the trainings conducted from 2011 – 2016. Graph is based on the data in Table 5</i> .....	11
Figure 4. <i>Percentage of total number of government and private institutions served in the trainings conducted from 2011 – 2016.</i> .....	11
Figure 5. <i>Total number of regular trainings conducted per year from 2011 - 2016</i> .....	12
Figure 6. <i>Total number of requested trainings conducted per year from 2011 – 2016</i> .....	12
Figure 7. <i>Overall average ratings of training courses conducted in 2011.</i> .....	13
Figure 8. <i>Overall average ratings of training courses conducted in 2012</i> .....	14
Figure 9. <i>Overall average ratings of training courses conducted in 2013</i> .....	15
Figure 10. <i>Overall average ratings of training courses conducted in 2014</i> .....	16
Figure 11. <i>Overall average ratings of training courses conducted in 2015</i> .....	17
Figure 12. <i>Overall average ratings of training courses conducted in 2016</i> .....	18
Figure 13. <i>Responses of participants on the “comments and recommendations” regarding the conduct or schedule of conducted training courses in 2011.</i> .....	19
Figure 14. <i>Responses of participants on the “comments and recommendations” regarding the conduct or schedule of conducted training courses in 2012.</i> .....	20
Figure 15. <i>Responses of participants on the “comments and recommendations” regarding the conduct or schedule of conducted training courses in 2013.</i> .....	21
Figure 16. <i>Responses of participants on the “comments and recommendations” regarding the conduct or schedule of conducted training courses in 2014.</i> .....	22
Figure 17. <i>Responses of participants on the “comments and recommendations” regarding the conduct or schedule of conducted training courses in 2015.</i> .....	23
Figure 18. <i>Responses of participants on the “comments and recommendations” regarding the conduct or schedule of conducted training courses in 2016.</i> .....	24
Figure 19. <i>Total number of trainees accepted per year from 2012 to 2016</i> .....	26
Figure 20. <i>Percentage distribution of the accepted trainees per division from 2012 - 2016</i>	26
Figure 21. <i>Trends in the number of accepted trainees per division from 2012 - 2016</i> .....	27
Figure 22. <i>Frequency of accepted trainees per section in the Atomic Research Division (ARD)</i> .....	27



Figure 23. <i>Frequency of accepted trainees per section in the Finance and Administration Division (FAD)</i> .....	28
Figure 24. <i>Frequency of accepted trainees per section in the Nuclear Services Division (NSD)</i> .....	28
Figure 25. <i>Frequency of accepted trainees per section in the Technology Diffusion Division (TDD)</i> .....	29
Figure 26. <i>Percentage of male and female trainees accepted in the OJT program from 2012 – 2016</i> .....	29
Figure 27. <i>Percentage of accepted trainees affiliated to government or private schools from 2012 – 2016</i> .....	30
Figure 28. <i>Number of schools affiliated to accepted trainees from 2012 – 2016</i> .....	30
Figure 29. <i>Total number of accepted trainees from 2012 – 2016 clustered according to level of education.</i> .....	31
Figure 30. <i>Fields of study/Specialization of accepted undergraduate trainees from 2012 – 2016</i> .....	31
Figure 31. <i>Total number of trainees from 2012 – 2016 clustered per home region of sending institution.</i> .....	33
Figure 32. <i>Frequency of trainees (Total from 2012 – 2016) per number of hours rendered in the OJT program</i> .....	35

## TRAINING COURSES

### 1. Summary of Regular and Special Training Courses Conducted from 2011 – 2016

**Table 1.** *List of regular courses offered annually.*

No.	Course Code	Course Title	Duration (days)	New Course Code*	Course Title	Duration (days)
1	SUNED	Safety in the Use of Nuclear Equipment and Devices	5	RSC-ID	Radiation Safety Course - Sealed Sources in Industrial Devices	5
2	RSOTC	Radiation Safety Officer Training Course	10	RSC-MR	Radiation Safety Course - Medical Use of Radioisotopes	10
3	RSCMRF	Radiation Safety Course for Medical and Radiopharmaceutical Facilities	10	RSC-MR	Radiation Safety Course - Medical Use of Radioisotopes	10
4	RHSCIR	Radiological Health and Safety Officer for Industrial Radiographers	10	RSC-IR	Radiation Safety Course - Industrial Radiography	10
5	RSC2D	Radiation Safety Course	2	RSC-CL	Radiation Safety Course- Commercial Sale Involving Radioactive Materials and Low Activity Sources	2
6	RSORC	Radiation Safety Officer Refresher Course	3	RSRC	Radiation Safety Refresher Course	3
7	SNSHSST	Seminar in Nuclear Science for High School Science Teachers	25	SNST	Seminar on Nuclear Science for Teachers	20
8	NTUCF	Course on Nuclear Technology for University/College Faculty	25	CNT	Course on Nuclear Technology	20
9	RTTCG	Radioisotope Techniques Training Course - General	20	CRT	Course on Radioisotope Technology	20
10	RTTCM	Radioisotope Techniques Training Course - Medical	20	CMR	Course on Medical Use of Radioisotopes	20

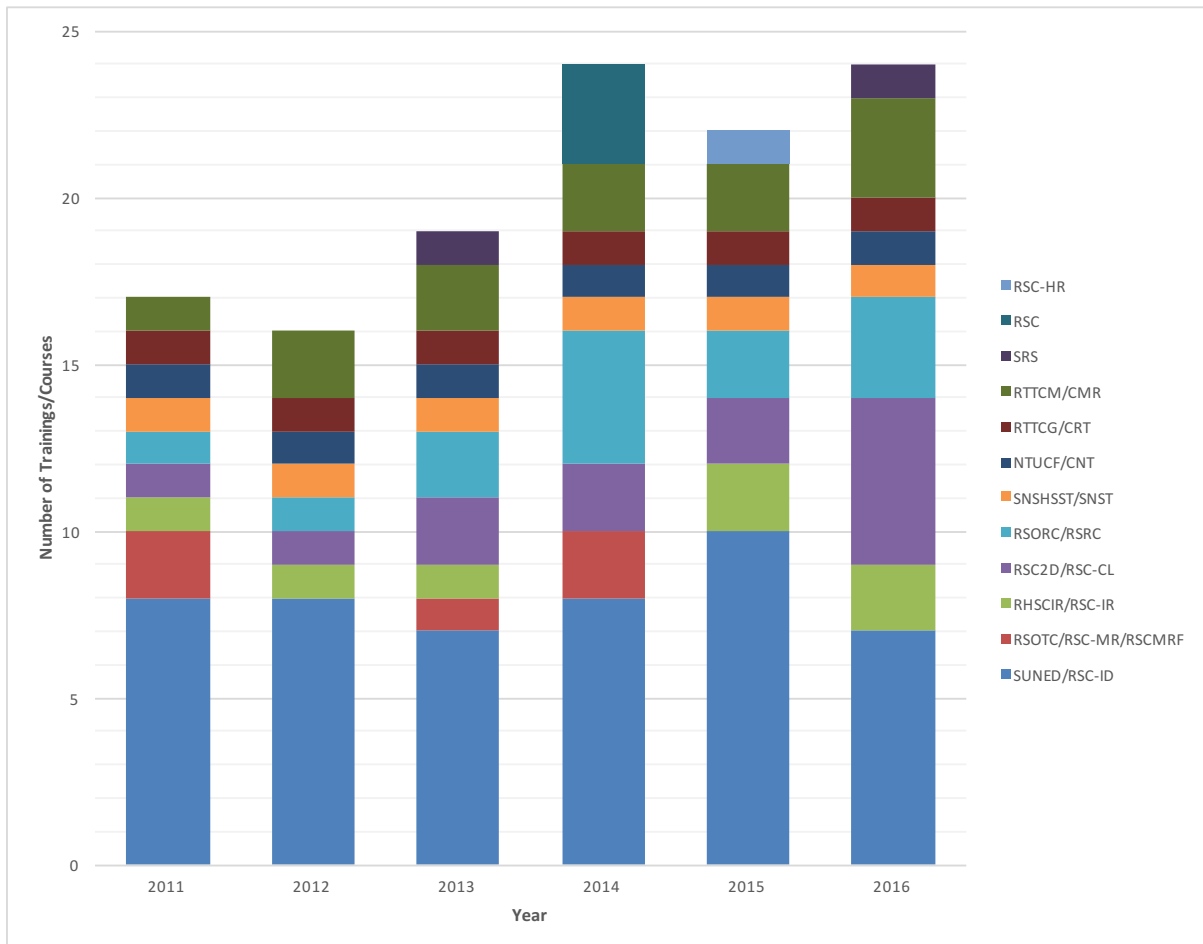
*\*effective CY 2014*

**Table 2.** *List of Special Courses requested by companies from 2011 - 2016*

No.	Course Code	Course Title	Duration (days)	Requesting Company
1	SRS	Seminar on Radiation Safety	2	Siemen's Power Operations, Inc.
2	RSC	Radiation Safety Course	2 4 5	Bureau of Plant Industry Geological Explorations & Drilling Supplies The Medical City
3	RSC-HR	Radiation Safety Course – Handling of Radioactive Wastes	5	Kobelco Japan

**Table 3.** Total number of training courses conducted per year from 2011 to 2016.

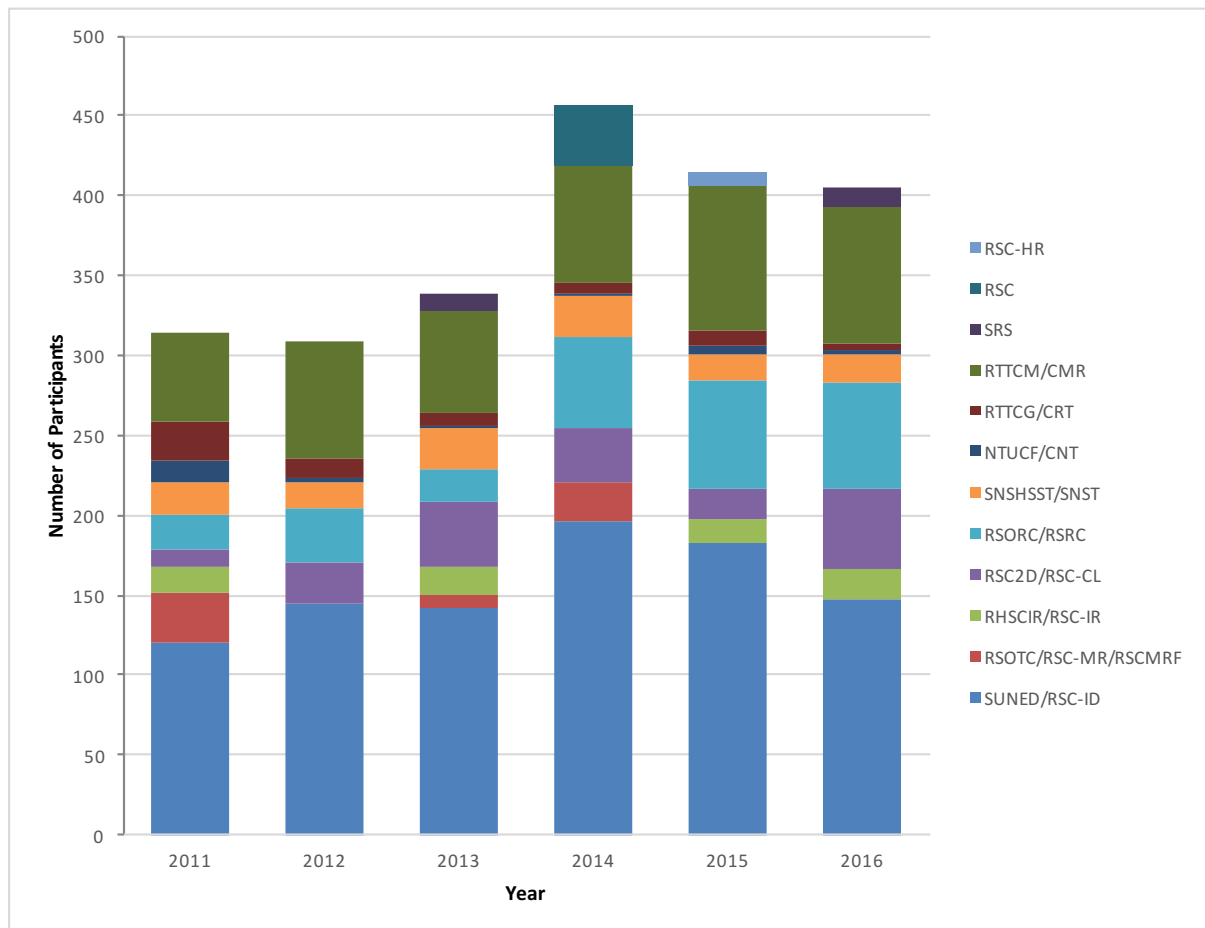
	2011	2012	2013	2014	2015	2016
SUNED/RSC-ID	8	8	7	8	10	7
RSOTC/RSC-MR/RSCMRF	2	0	1	2	0	0
RHSCIR/RSC-IR	1	1	1	0	2	2
RSC2D/RSC-CL	1	1	2	2	2	5
RSORC/RSRC	1	1	2	4	2	3
SNSHSST/SNST	1	1	1	1	1	1
NTUCF/CNT	1	1	1	1	1	1
RTTCG/CRT	1	1	1	1	1	1
RTTCM/CMR	1	2	2	2	2	3
SRS			1			1
RSC				3		
RSC-HR					1	
<b>Total</b>	<b>17</b>	<b>16</b>	<b>19</b>	<b>24</b>	<b>22</b>	<b>24</b>



**Figure 1.** Number of training courses conducted per year from 2011 to 2016

**Table 4.** Total number of participants for each training course conducted per year from 2011 to 2016.

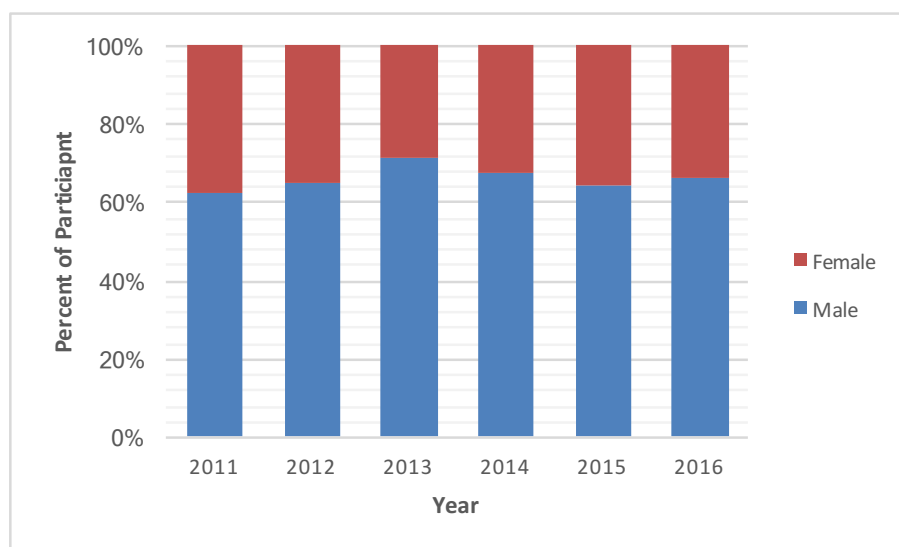
	2011	2012	2013	2014	2015	2016
<b>SUNED/RSC-ID</b>	120	145	142	196	183	147
<b>RSOTC/RSC-MR/RSCMRF</b>	32	0	8	25	0	0
<b>RHSCIR/RSC-IR</b>	16	0	18	0	14	19
<b>RSC2D/RSC-CL</b>	11	25	41	33	20	51
<b>RSORC/RSRC</b>	21	35	20	57	68	66
<b>SNSHSST/SNST</b>	21	15	26	26	16	18
<b>NTUCF/CNT</b>	13	4	1	1	5	2
<b>RTTCG/CRT</b>	25	12	8	7	9	5
<b>RTTCM/CMR</b>	55	73	64	74	92	85
<b>SRS</b>			11			12
<b>RSC</b>				38		
<b>RSC-HR</b>					8	
<b>Total</b>	314	309	339	457	415	405



**Figure 2.** Total number of participants per training course conducted from 2011 to 2016

**Table 5.** Total number of male and female participants trained per year from 2011 - 2016

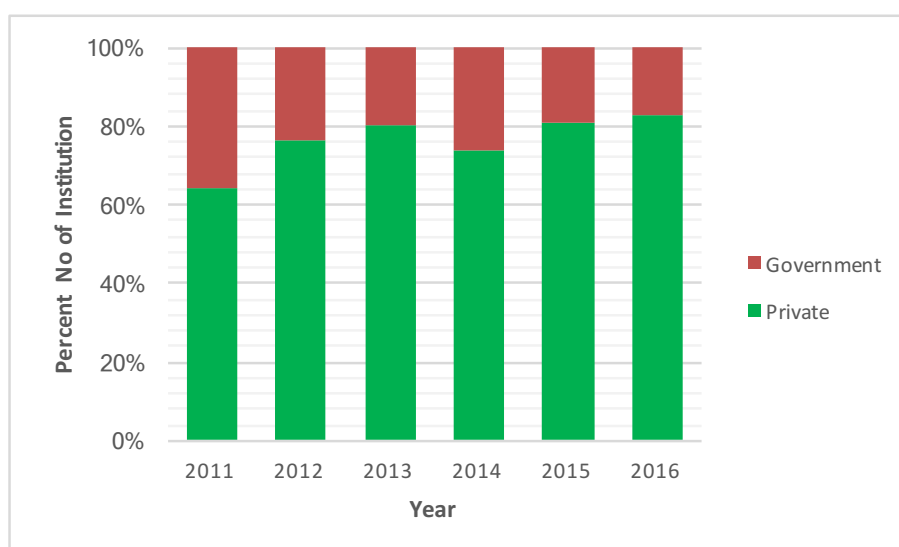
	2011	2012	2013	2014	2015	2016
<b>Male</b>	196	200	242	237	268	268
<b>Female</b>	118	109	96	115	147	137
<b>Total</b>	314	309	338	352	415	405



**Figure 3.** Percentage of total number of male and female participants in the trainings conducted from 2011 – 2016. Graph is based on the data in Table 5

**Table 6.** Total number of government and private institutions served in the trainings conducted from 2011 - 2016

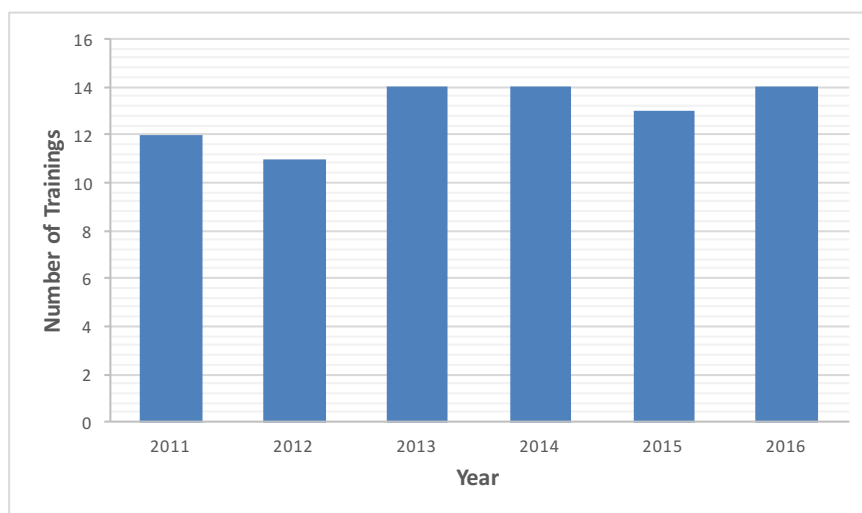
	2011	2012	2013	2014	2015	2016
<b>Government Institutions</b>	60	44	37	34	34	28
<b>Private Institutions</b>	109	143	148	95	142	138
<b>Total</b>	169	187	185	129	176	166



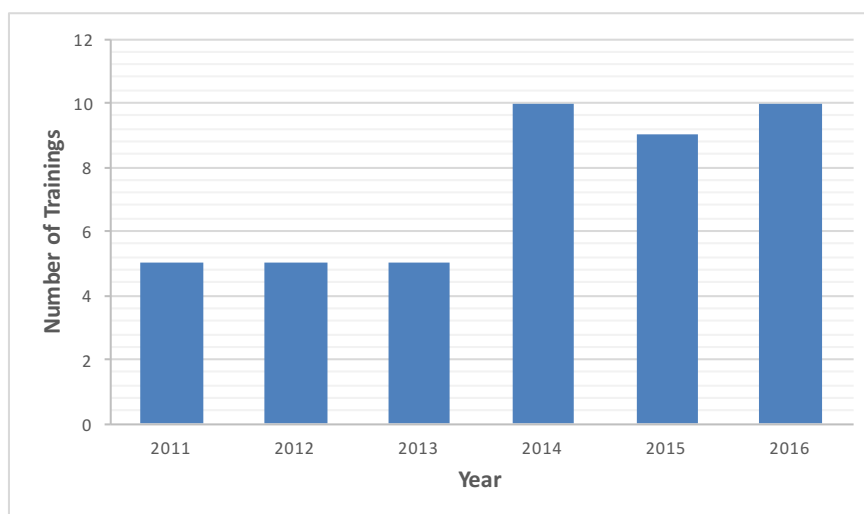
**Figure 4.** Percentage of total number of government and private institutions served in the trainings conducted from 2011 – 2016.

**Table 7.** Total number of regular and requested trainings per year from 2011 – 2016 and corresponding venues

		No. of Trainings	No. of Trainings held at PNRI	No. of Trainings held outside PNRI
<b>2011</b>	Regular	12	12	0
	Requested	5	0	5
<b>2012</b>	Regular	11	11	0
	Requested	5	0	5
<b>2013</b>	Regular	14	14	0
	Requested	5	1	4
<b>2014</b>	Regular	14	14	0
	Requested	10	0	10
<b>2015</b>	Regular	13	13	0
	Requested	9	3	6
<b>2016</b>	Regular	14	14	0
	Requested	10	2	8



**Figure 5.** Total number of regular trainings conducted per year from 2011 - 2016

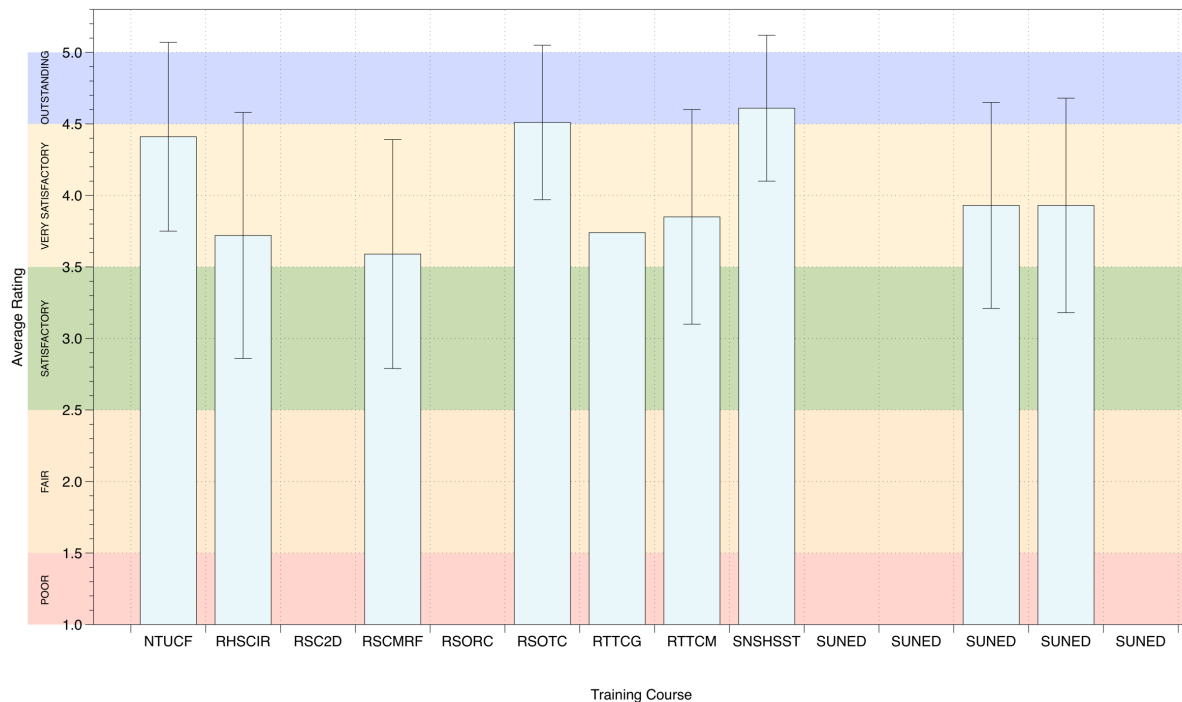


**Figure 6.** Total number of requested trainings conducted per year from 2011 – 2016

## 2. Evaluation Results of Trainings conducted from 2011 – 2016

**Table 8.** Overall average rating of training courses conducted in 2011. Components of evaluation includes (a) Program of Activities, (b) Materials, (c) Program Objectives, (d) Venue, and (e) Content and Performance. Raters used a 5-point scale to indicate their agreement to statements in the evaluation questionnaire.

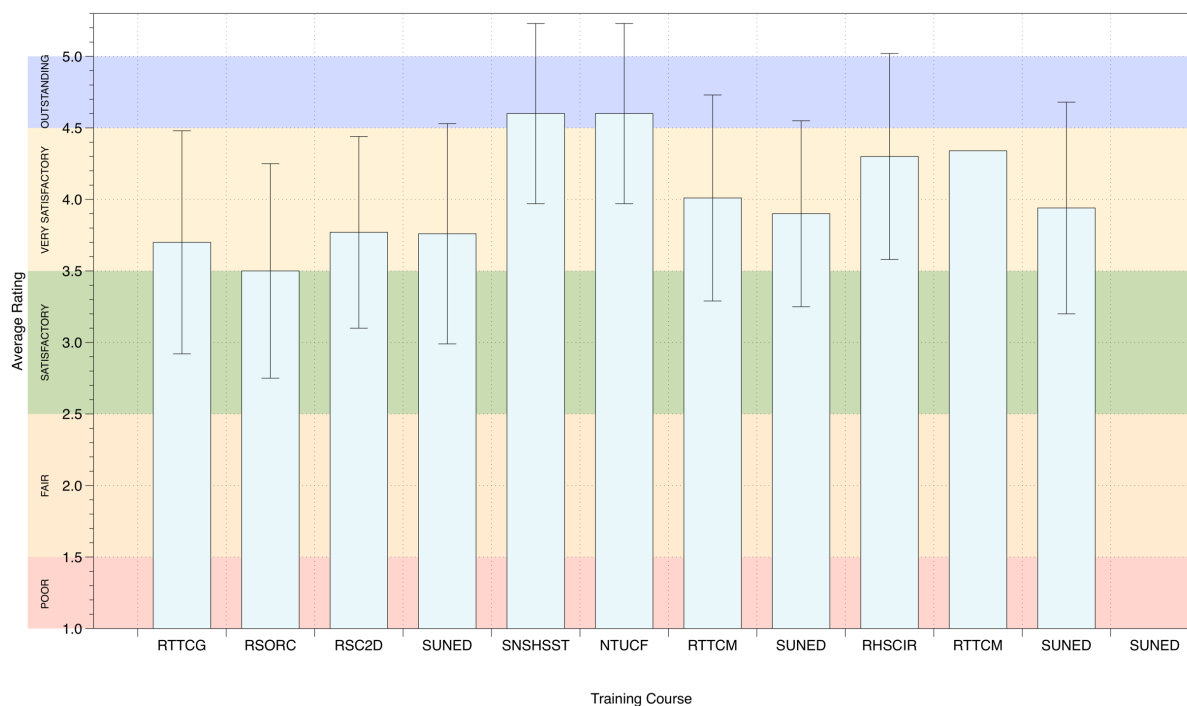
Course	Overall Average Rating	Standard Deviation	%RSD
NTUCF	4.41	0.66	15.05
RHSCIR	3.72	0.86	22.35
RSC2D	Not reported		
RSCMRF	3.60	0.80	22.35
RSORC			
RSOTC	4.51	0.54	11.93
RTTCG	3.74		
RTTCM	3.85	0.75	19.40
SNSHSST	4.61	0.51	11.14
SUNED	Not reported		
SUNED	Not reported		
SUNED	3.93	0.72	18.31
SUNED	3.93	0.75	19.03
SUNED	Not reported		
SUNED	Not reported		
SUNED	Not reported		
SUNED	Not reported		



**Figure 7.** Overall average ratings of training courses conducted in 2011.

**Table 9.** Overall average rating of training courses conducted in 2012. Components of evaluation includes (a) Program of Activities, (b) Materials, (c) Program Objectives, (d) Venue, and (e) Content and Performance. Raters used a 5-point scale to indicate their agreement to statements in the evaluation questionnaire.

Course	Overall Average Rating	Standard Deviation	%RSD
RTTCG	3.70	0.78	21.15
RSORC	3.50	0.75	21.53
RSC2D	3.77	0.67	17.81
SUNED	3.76	0.77	20.49
SNSHSST	4.60	0.63	13.75
NTUCF	4.60	0.63	13.75
RTTCM	4.01	0.72	17.84
SUNED	3.90	0.65	16.60
RHSCIR	4.30	0.72	16.81
RTTCM	4.34		
SUNED	3.94	0.74	18.78
SUNED	Not reported		
SUNED	Not reported		
SUNED	Not reported		
SUNED	Not reported		
SUNED	Not reported		

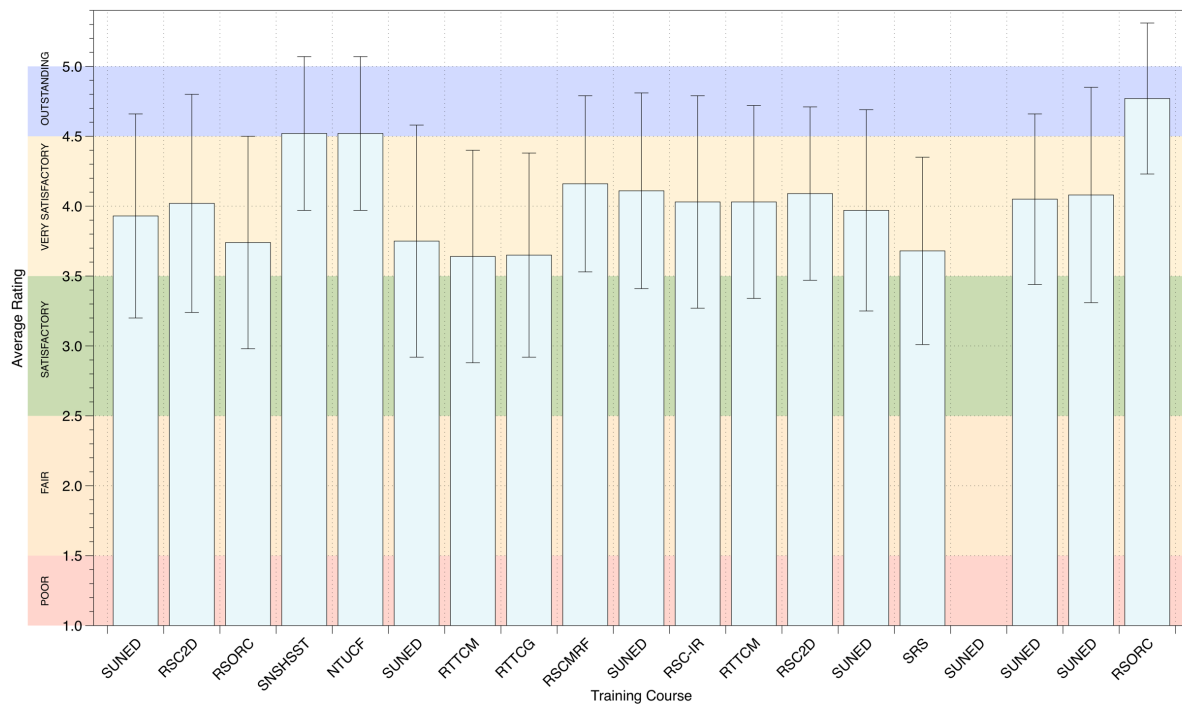


**Figure 8.** Overall average ratings of training courses conducted in 2012



**Table 10.** Overall average rating of training courses conducted in 2013. Components of evaluation includes (a) Program of Activities, (b) Materials, (c) Program Objectives, (d) Venue, and (e) Content and Performance. Raters used a 5-point scale to indicate their agreement to statements in the evaluation questionnaire.

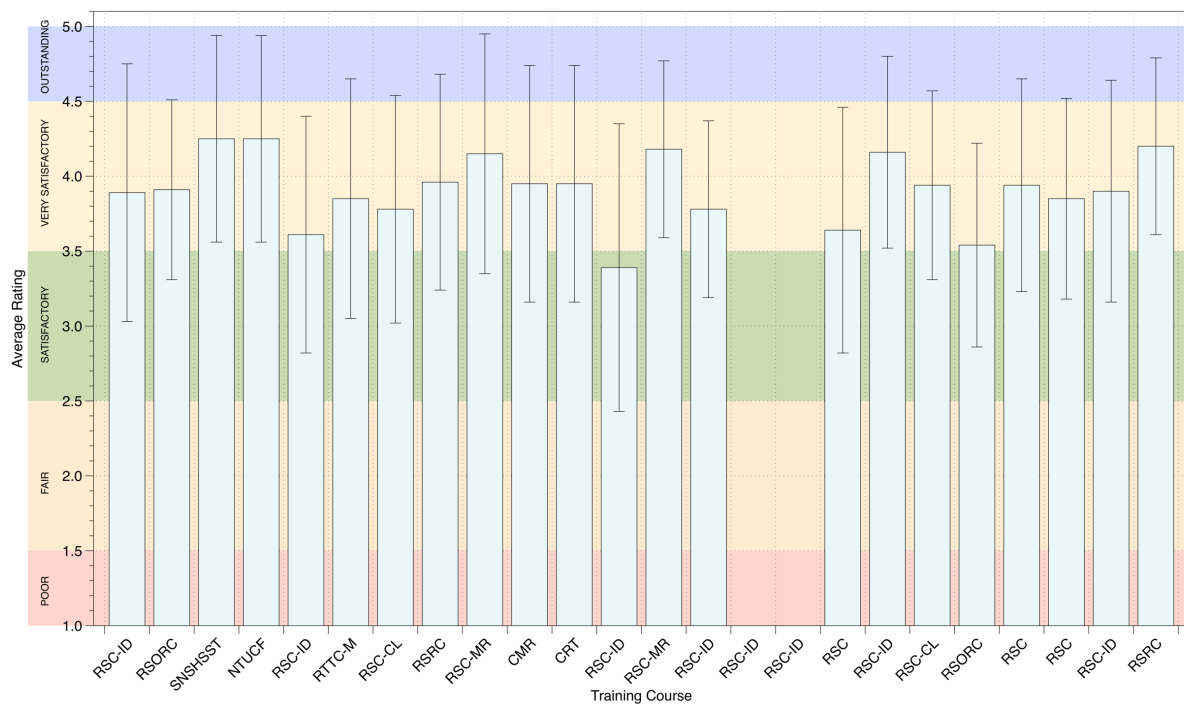
Course	Overall Average Rating	Standard Deviation	%RSD
SUNED	3.93	0.73	18.50
RSC2D	4.02	0.78	19.49
RSORC	3.74	0.76	20.41
SNSHSST	4.52	0.55	12.20
NTUCF	4.52	0.55	12.20
SUNED	3.75	0.83	22.02
RTTCM	3.64	0.76	20.82
RTTCG	3.65	0.73	20.02
RSCMRF	4.16	0.63	15.04
SUNED	4.11	0.70	17.14
RSC-IR	4.03	0.76	18.84
RTTCM	4.03	0.69	16.29
RSC2D	4.09	0.62	15.25
SUNED	3.97	0.72	18.03
SRS	3.68	0.67	18.15
SUNED	Not reported		
SUNED	4.05	0.61	15.17
SUNED	4.08	0.77	18.80
RSORC	4.77	0.54	11.41



**Figure 9.** Overall average ratings of training courses conducted in 2013

**Table 11.** Overall average rating of training courses conducted in 2014. Components of evaluation includes (a) Program of Activities, (b) Materials, (c) Program Objectives, (d) Venue, and (e) Content and Performance. Raters used a 5-point scale to indicate their agreement to statements in the evaluation questionnaire.

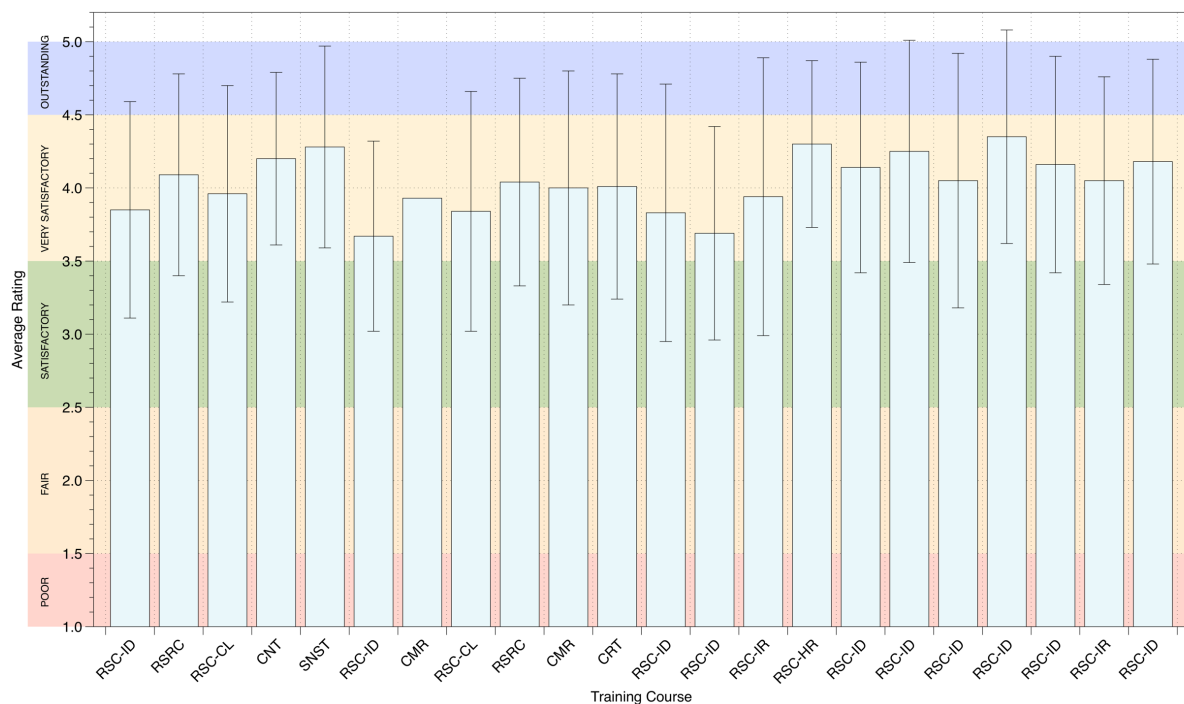
Course	Overall Average Rating	Standard Deviation	%RSD
RSC-ID	3.89	0.86	22.21
RSORC	3.91	0.60	15.42
SNSHSST	4.25	0.69	16.29
NTUCF	4.25	0.69	16.29
RSC-ID	3.61	0.79	21.90
RTTC-M	3.85	0.80	20.84
RSC-CL	3.78	0.76	19.99
RSRC	3.96	0.72	18.28
RSC-MR	4.15	0.80	19.26
CMR	3.95	0.79	20.01
CRT	3.95	0.79	20.01
RSC-ID	3.39	0.96	28.24
RSC-MR	4.18	0.59	14.18
RSC-ID	3.78	0.59	15.61
RSC-ID	Not reported		
RSC-ID	Not reported		
RSC	3.64	0.82	22.58
RSC-ID	4.16	0.64	15.30
RSC-CL	3.94	0.63	16.08
RSORC	3.54	0.68	19.14
RSC	3.94	0.71	18.00
RSC	3.85	0.67	17.44
RSC-ID	3.90	0.74	18.88
RSRC	4.20	0.59	14.09



**Figure 10.** Overall average ratings of training courses conducted in 2014

**Table 12.** Overall average rating of training courses conducted in 2015. Components of evaluation includes (a) Program of Activities, (b) Materials, (c) Program Objectives, (d) Venue, and (e) Content and Performance. Raters used a 5-point scale to indicate their agreement to statements in the evaluation questionnaire.

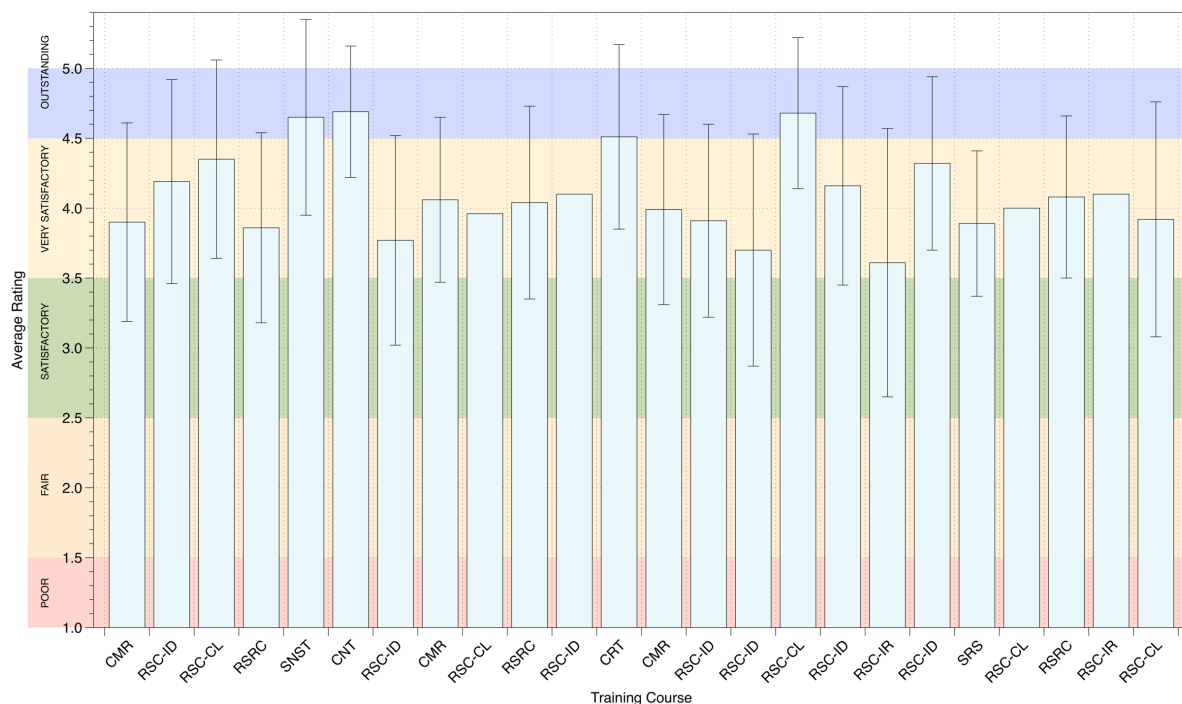
Course	Overall Average Rating	Standard Deviation	%RSD
RSC-ID	3.85	0.74	19.21
RSRC	4.09	0.69	16.97
RSC-CL	3.96	0.74	18.73
CNT	4.20	0.59	14.14
SNST	4.28	0.69	16.12
RSC-ID	3.67	0.65	17.80
CMR	3.93		
RSC-CL	3.84	0.82	21.36
RSRC	4.04	0.71	17.62
CMR	4.00	0.80	20.09
CRT	4.01	0.77	19.23
RSC-ID	3.83	0.88	22.94
RSC-ID	3.69	0.73	19.72
RSC-IR	3.94	0.95	24.04
RSC-HR	4.30	0.57	13.35
RSC-ID	4.14	0.72	17.45
RSC-ID	4.25	0.76	17.79
RSC-ID	4.05	0.87	21.47
RSC-ID	4.35	0.73	16.73
RSC-ID	4.16	0.74	17.68
RSC-IR	4.05	0.71	17.47
RSC-ID	4.18	0.70	16.67



**Figure 11.** Overall average ratings of training courses conducted in 2015

**Table 13.** Overall average rating of training courses conducted in 2016. Components of evaluation includes (a) Program of Activities, (b) Materials, (c) Program Objectives, (d) Venue, and (e) Content and Performance. Raters used a 5-point scale to indicate their agreement to statements in the evaluation questionnaire.

Course	Overall Average Rating	Standard Deviation	%RSD
CMR	3.90	0.71	18.35
RSC-ID	4.19	0.73	17.39
RSC-CL	4.35	0.71	16.43
RSRC	3.86	0.68	17.54
SNST	4.65	0.70	14.96
CNT	4.69	0.47	9.95
RSC-ID	3.77	0.75	19.98
CMR	4.06	0.59	14.57
RSC-CL	3.96		
RSRC	4.04	0.69	17.05
RSC-ID	4.10		
CRT	4.51	0.66	14.61
CMR	3.99	0.68	17.13
RSC-ID	3.91	0.69	17.58
RSC-ID	3.70	0.83	22.53
RSC-CL	4.68	0.54	11.44
RSC-ID	4.16	0.71	16.94
RSC-IR	3.61	0.96	26.60
RSC-ID	4.32	0.62	14.37
SRS	3.89	0.52	13.31
RSC-CL	4.00		
RSRC	4.08	0.58	14.24
RSC-IR	4.10		
RSC-CL	3.92	0.84	21.54

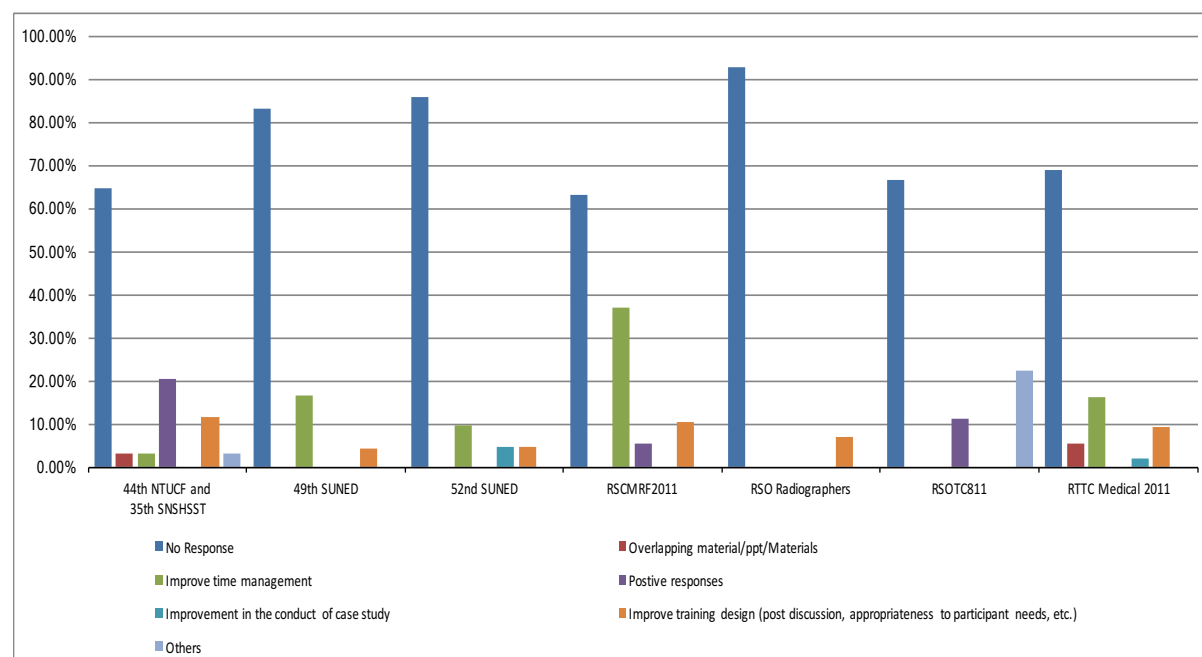


**Figure 12.** Overall average ratings of training courses conducted in 2016

### 3. Comments and Recommendations on Training Courses conducted from 2011 – 2016

**Table 14.** Distribution of participant responses on “comments and recommendations” regarding the conduct or schedule of training courses conducted in 2011.

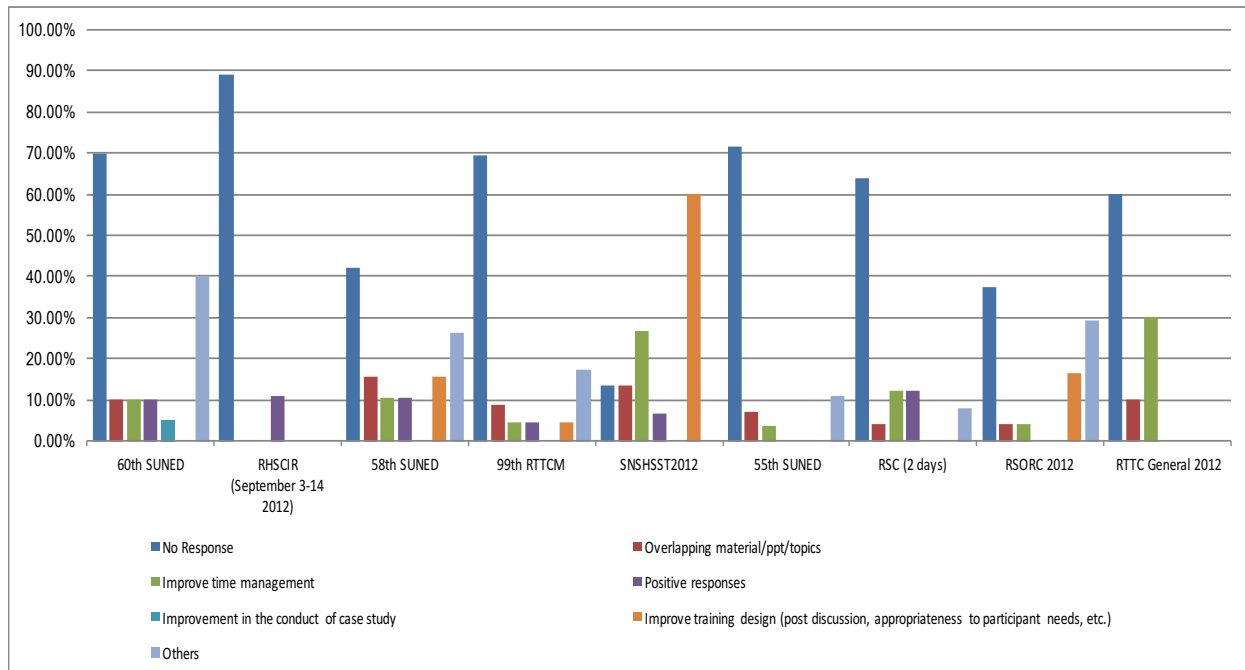
Description	44th NTUCF and 35th SNSHSST	49th SUNED	52nd SUNED	RSCMRF 2011	RSO Radiographers	RSOTC8 11	RTTC Medical 2011
No Response	64.71%	83.33%	85.71%	63.16%	92.86%	66.67%	69.09%
Overlapping material/ppt/topics	2.94%	0.00%	0.00%	0.00%	0.00%	0.00%	5.45%
Improve time management	2.94%	16.67%	9.52%	36.84%	0.00%	0.00%	16.36%
Positive responses	20.59%	0.00%	0.00%	5.26%	0.00%	11.11%	0.00%
Improvement in the conduct of case study	0.00%	0.00%	4.76%	0.00%	0.00%	0.00%	1.82%
Improve training design (post discussion, appropriateness to participant needs, etc.)	11.76%	4.17%	4.76%	10.53%	7.14%	0.00%	9.09%
Others	2.94%	0.00%	0.00%	0.00%	0.00%	22.22%	0.00%



**Figure 13.** Responses of participants on the “comments and recommendations” regarding the conduct or schedule of conducted training courses in 2011.

**Table 15.** Distribution of participant responses on “comments and recommendations” regarding the conduct or schedule of training courses conducted in 2012.

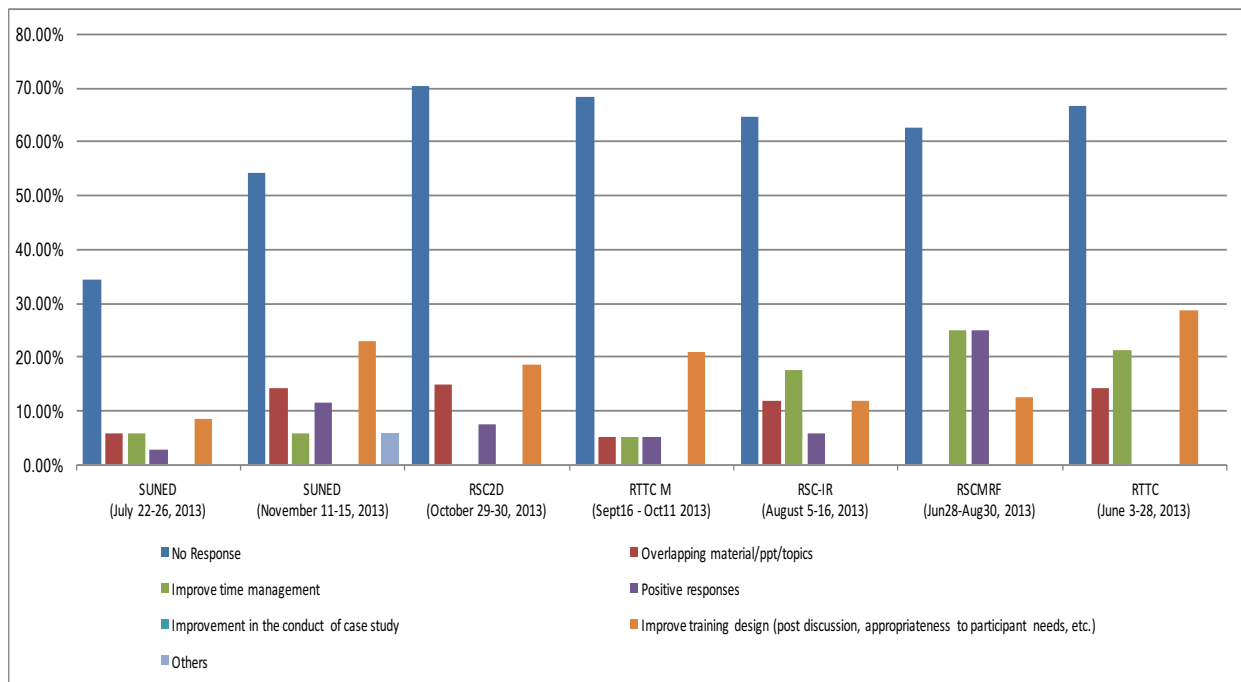
Description	60th SUNED	RHSCI R (Sep 3-14 2012)	58th SUNED	99th RTTC M	SNSHS ST2012	55th SUNED	RSC (2 days)	RSORC 2012	RTTC General 2012
No Response	70.00%	88.89%	42.11%	69.57%	13.33%	71.43%	64.00%	37.50%	60.00%
Overlapping material/ppt/topics	10.00%	0.00%	15.79%	8.70%	13.33%	7.14%	4.00%	4.17%	10.00%
Improve time management	10.00%	0.00%	10.53%	4.35%	26.67%	3.57%	12.00%	4.17%	30.00%
Positive responses	10.00%	11.11%	10.53%	4.35%	6.67%	0.00%	12.00%	0.00%	0.00%
Improvement in the conduct of case study	5.00%	0.00%	0.00%	0.00%	0.00%	0.00%	0.00%	0.00%	0.00%
Improve training design (post discussion, appropriateness to participant needs, etc.)	0.00%	0.00%	15.79%	4.35%	60.00%	0.00%	0.00%	16.67%	0.00%
Others	40.00%	0.00%	26.32%	17.39%	0.00%	10.71%	8.00%	29.17%	0.00%



**Figure 14.** Responses of participants on the “comments and recommendations” regarding the conduct or schedule of conducted training courses in 2012.

**Table 16.** Distribution of participant responses on “comments and recommendations” regarding the conduct or schedule of training courses conducted in 2013.

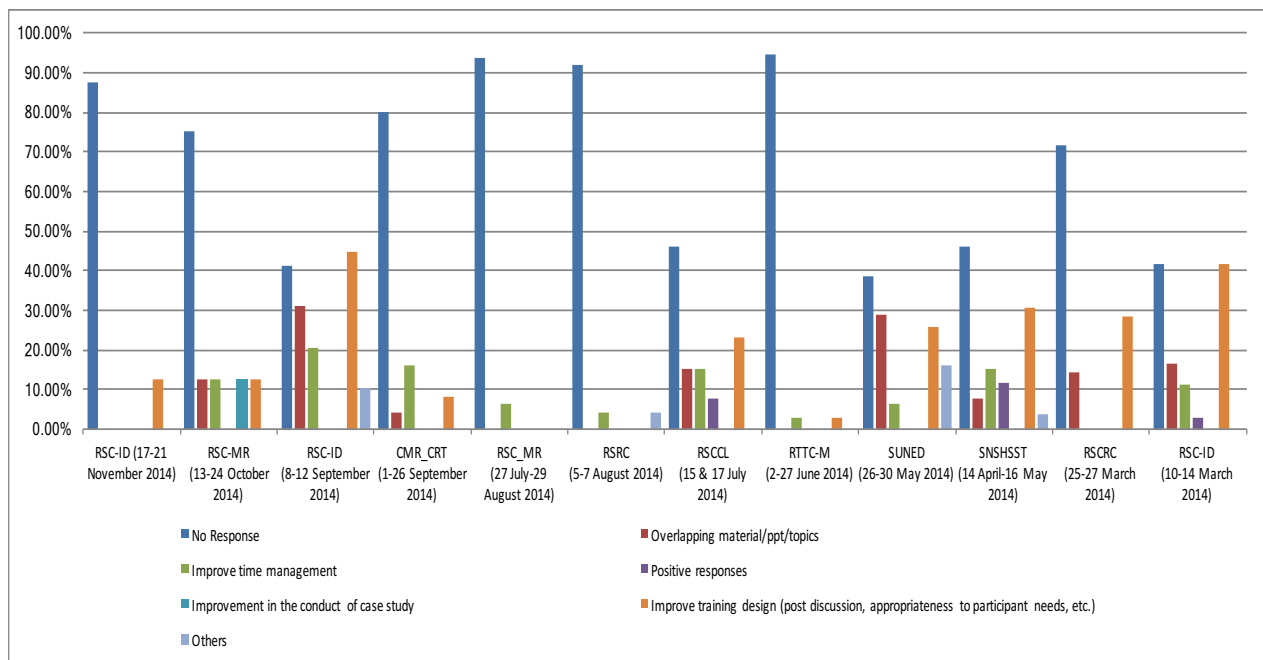
Description	SUNED (July 22-26, 2013)	SUNED (November 11-15, 2013)	RSC2D (October 29-30, 2013)	RTTC M (Sept16 - Oct11 2013)	RSC-IR (August 5-16, 2013)	RSCMRF (Jun28-Aug30, 2013)	RTTC (June 3-28, 2013)
No Response	34.29%	54.29%	70.37%	68.42%	64.71%	62.50%	66.67%
Overlapping material/ppt/topics	5.71%	14.29%	14.81%	5.26%	11.76%	0.00%	14.29%
Improve time management	5.71%	5.71%	0.00%	5.26%	17.65%	25.00%	21.43%
Positive responses	2.86%	11.43%	7.41%	5.26%	5.88%	25.00%	0.00%
Improvement in the conduct of case study	0.00%	0.00%	0.00%	0.00%	0.00%	0.00%	0.00%
Improve training design (post discussion, appropriateness to participant needs, etc.)	8.57%	22.86%	18.52%	21.05%	11.76%	12.50%	28.57%
Others	0.00%	5.71%	0.00%	0.00%	0.00%	0.00%	0.00%



**Figure 15.** Responses of participants on the “comments and recommendations” regarding the conduct or schedule of conducted training courses in 2013.

**Table 17.** Distribution of participant responses on “comments and recommendations” regarding the conduct or schedule of training courses conducted in 2014.

Description	RSC-ID (17-21 November 2014)	RSC-MR (13-24 October 2014)	RSC-ID (8-12 September 2014)	CMR_CRT (1-26 September 2014)	RSC_MR (27 July-29 August 2014)	RSRC (5-7 August 2014)	RSCCL (15 & 17 July 2014)	RTTC-M (2-27 June 2014)	SUNED (26-30 May 2014)	SNSHS ST (14 April-16 May 2014)	RSCRC (25-27 March 2014)	RSC-ID (10-14 March 2014)
No Response	87.50%	75.00%	41.38%	80.00%	93.75%	92.00%	46.15%	94.44%	38.71%	46.15%	71.43%	41.67%
Overlapping material/ppt/topics	0.00%	12.50%	31.03%	4.00%	0.00%	0.00%	15.38%	0.00%	29.03%	7.69%	14.29%	16.67%
Improve time management	0.00%	12.50%	20.69%	16.00%	6.25%	4.00%	15.38%	2.78%	6.45%	15.38%	0.00%	11.11%
Positive responses	0.00%	0.00%	0.00%	0.00%	0.00%	0.00%	7.69%	0.00%	0.00%	11.54%	0.00%	2.78%
Improvement in the conduct of case study	0.00%	12.50%	0.00%	0.00%	0.00%	0.00%	0.00%	0.00%	0.00%	0.00%	0.00%	0.00%
Improve training design (post discussion, appropriateness to participant needs, etc.)	12.50%	12.50%	44.83%	8.00%	0.00%	0.00%	23.08%	2.78%	25.81%	30.77%	28.57%	41.67%
Others	0.00%	0.00%	10.34%	0.00%	0.00%	4.00%	0.00%	0.00%	16.13%	3.85%	0.00%	0.00%

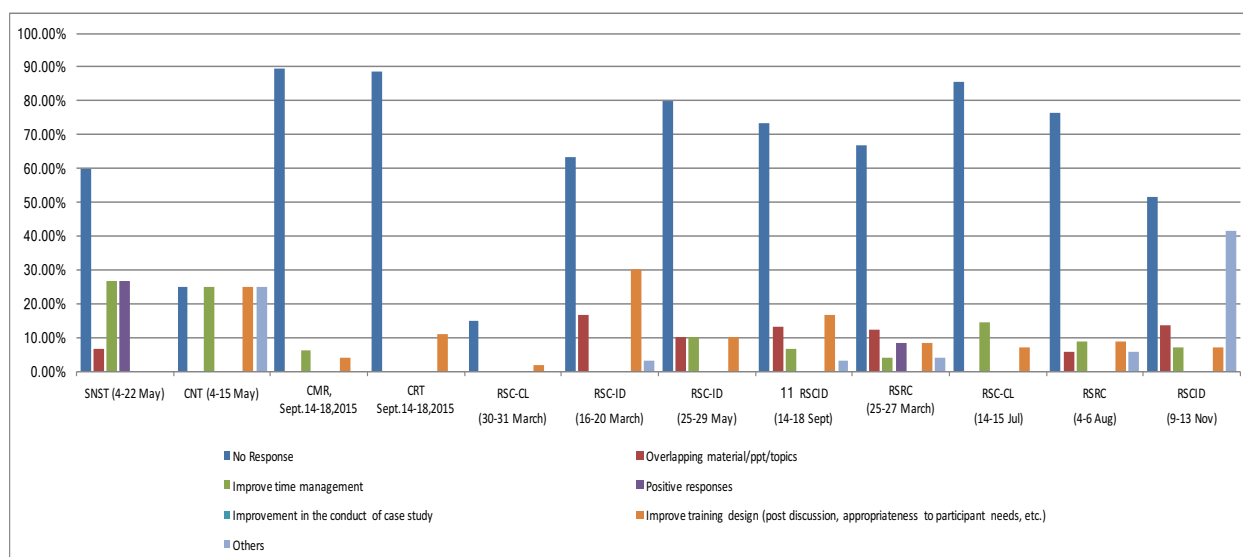


**Figure 16.** Responses of participants on the “comments and recommendations” regarding the conduct or schedule of conducted training courses in 2014.



**Table 18.** Distribution of participant responses on “comments and recommendations” regarding the conduct or schedule of training courses conducted in 2015.

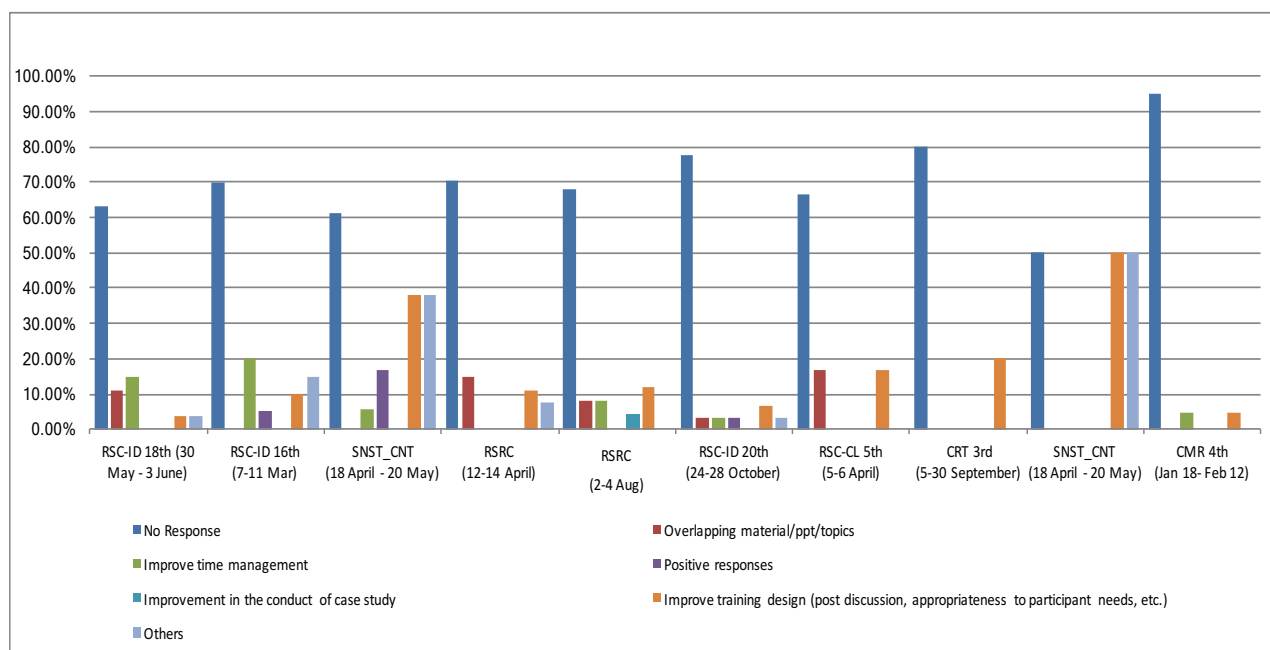
Description	SNST (4-22 May)	CNT (4-15 May)	CMR, Sept.14 - 18,2015	CRT Sept.14 - 18,2015	RSC- CL (30-31 March)	RSC- ID (16-20 March)	RSC- ID (25-29 May)	11 RSCID (14-18 Sept)	RSRC (25-27 March)	RSC- CL (14-15 Jul)	RSRC (4-6 Aug)	RSCID (9-13 Nov)
No Response	60.00%	25.00%	89.58%	88.89%	14.81%	63.33%	80.00%	73.33%	66.67%	85.71%	76.47%	51.72%
Overlapping material/ppt/topics	6.67%	0.00%	0.00%	0.00%	0.00%	16.67%	10.00%	13.33%	12.50%	0.00%	5.88%	13.79%
Improve time management	26.67%	25.00%	6.25%	0.00%	0.00%	0.00%	10.00%	6.67%	4.17%	14.29%	8.82%	6.90%
Positive responses	26.67%	0.00%	0.00%	0.00%	0.00%	0.00%	0.00%	0.00%	8.33%	0.00%	0.00%	0.00%
Improvement in the conduct of case study	0.00%	0.00%	0.00%	0.00%	0.00%	0.00%	0.00%	0.00%	0.00%	0.00%	0.00%	0.00%
Improve training design (post discussion, appropriateness to participant needs, etc.)	0.00%	25.00%	4.17%	11.11%	1.85%	30.00%	10.00%	16.67%	8.33%	7.14%	8.82%	6.90%
Others	0.00%	25.00%	0.00%	0.00%	0.00%	3.33%	0.00%	3.33%	4.17%	0.00%	5.88%	41.38%



**Figure 17.** Responses of participants on the “comments and recommendations” regarding the conduct or schedule of conducted training courses in 2015.

**Table 19.** Distribution of participant responses on “comments and recommendations” regarding the conduct or schedule of training courses conducted in 2016.

Description	RSC-ID 18th (30 May-3 June)	RSC-ID 16th (7-11 Mar)	SNST/C NT (18 Apr-20 May)	RSRC (12-14 Apr)	RSRC (2-4 Aug)	RSC-ID 20th (24-28 Oct)	RSC-CL 5th (5-6 April)	CRT 3rd (5-30 Sep)	SNST/C NT (18 Apr-20 May)	CMR 4th (18 Jan – 12 Feb)
No Response	62.96%	70.00%	61.11%	70.37%	68.00%	77.42%	66.67%	80.00%	50.00%	95.24%
Overlapping material/ppt/topics	11.11%	0.00%	0.00%	14.81%	8.00%	3.23%	16.67%	0.00%	0.00%	0.00%
Improve time management	14.81%	20.00%	5.56%	0.00%	8.00%	3.23%	0.00%	0.00%	0.00%	4.76%
Positive responses	0.00%	5.00%	16.67%	0.00%	0.00%	3.23%	0.00%	0.00%	0.00%	0.00%
Improvement in the conduct of case study	0.00%	0.00%	0.00%	0.00%	4.00%	0.00%	0.00%	0.00%	0.00%	0.00%
Improve training design (post discussion, appropriateness to participant needs, etc.)	3.70%	10.00%	37.93%	11.11%	12.00%	6.45%	16.67%	20.00%	50.00%	4.76%
Others	3.70%	15.00%	37.93%	7.41%	0.00%	3.23%	0.00%	0.00%	50.00%	0.00%



**Figure 18.** Responses of participants on the “comments and recommendations” regarding the conduct or schedule of conducted training courses in 2016.

## ON THE JOB TRAINING PROGRAM

**Table 20.** Number of trainees accepted per year in the different divisions and sections from 2012 - 2016

	2012	2013	2014	2015	2016	Grand Total
<b>ARD</b>	<b>25</b>	<b>60</b>	<b>82</b>	<b>72</b>	<b>77</b>	<b>316</b>
APRS	3	14	10	1	26	54
ARS	16	19	23	12	12	82
BMRS	4	6	30	18	17	75
CRS	1	11	6	21	11	50
HPRS	1	6	11	17	6	41
NMR		4	2	3	5	14
<b>FAD</b>	<b>14</b>	<b>15</b>	<b>9</b>	<b>14</b>	<b>27</b>	<b>79</b>
Accounting	1		2	2	1	6
Budget	2	1	1	1	1	6
Cashier		1		1	5	7
Clinic			2			2
FAD Office				1	1	2
GSS	1	1	2	2	10	16
HRMRCS	5	5		5	6	21
PP	5	7	2	2	3	19
<b>NRD</b>	<b>1</b>	<b>3</b>		<b>1</b>	<b>3</b>	<b>8</b>
IES	1			1		2
LRES		2				2
RIAS		1			2	3
RSDS					1	1
<b>NSD</b>	<b>18</b>	<b>24</b>	<b>16</b>	<b>32</b>	<b>38</b>	<b>128</b>
ESS		9	2	6	6	23
ISS	1	1		2	3	7
ITS				1		1
NATAS	10	8	8	15	16	57
NROS					2	2
RPSS	7	6	6	8	11	38
<b>OD</b>	<b>1</b>	<b>2</b>	<b>1</b>			<b>4</b>
OD Office	1	2				3
Planning			1			1
<b>TDD</b>	<b>19</b>	<b>16</b>	<b>15</b>	<b>11</b>	<b>10</b>	<b>71</b>
ICS	3		3		2	8
MISS	3	5	2	4	1	15
NIDS	5	4	3	5	3	20
NTC	8	7	7	2	4	28
<b>Grand Total</b>	<b>78</b>	<b>120</b>	<b>123</b>	<b>130</b>	<b>155</b>	<b>606</b>

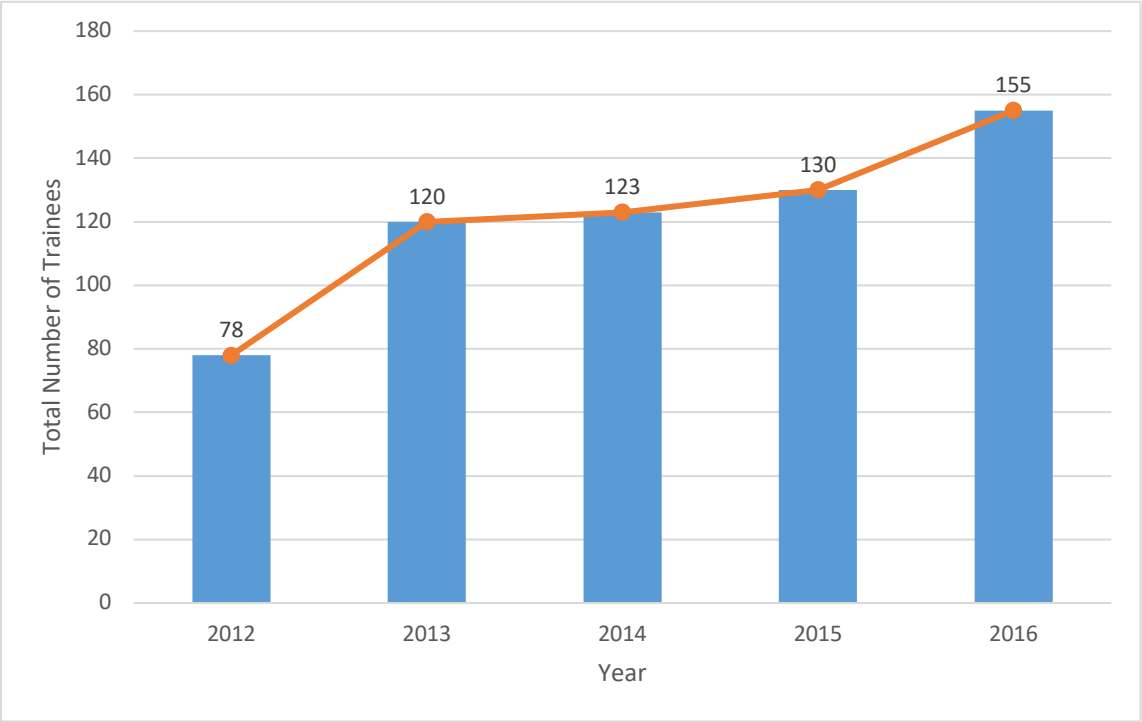


Figure 19. Total number of trainees accepted per year from 2012 to 2016

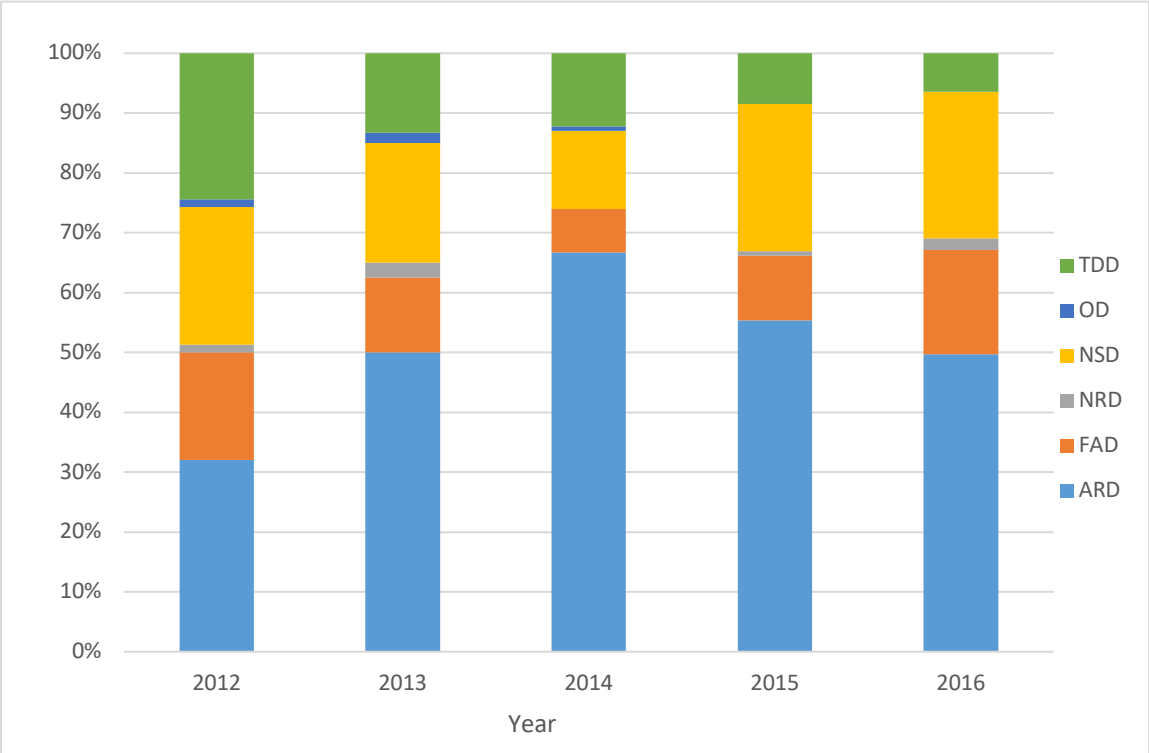


Figure 20. Percentage distribution of the accepted trainees per division from 2012 - 2016

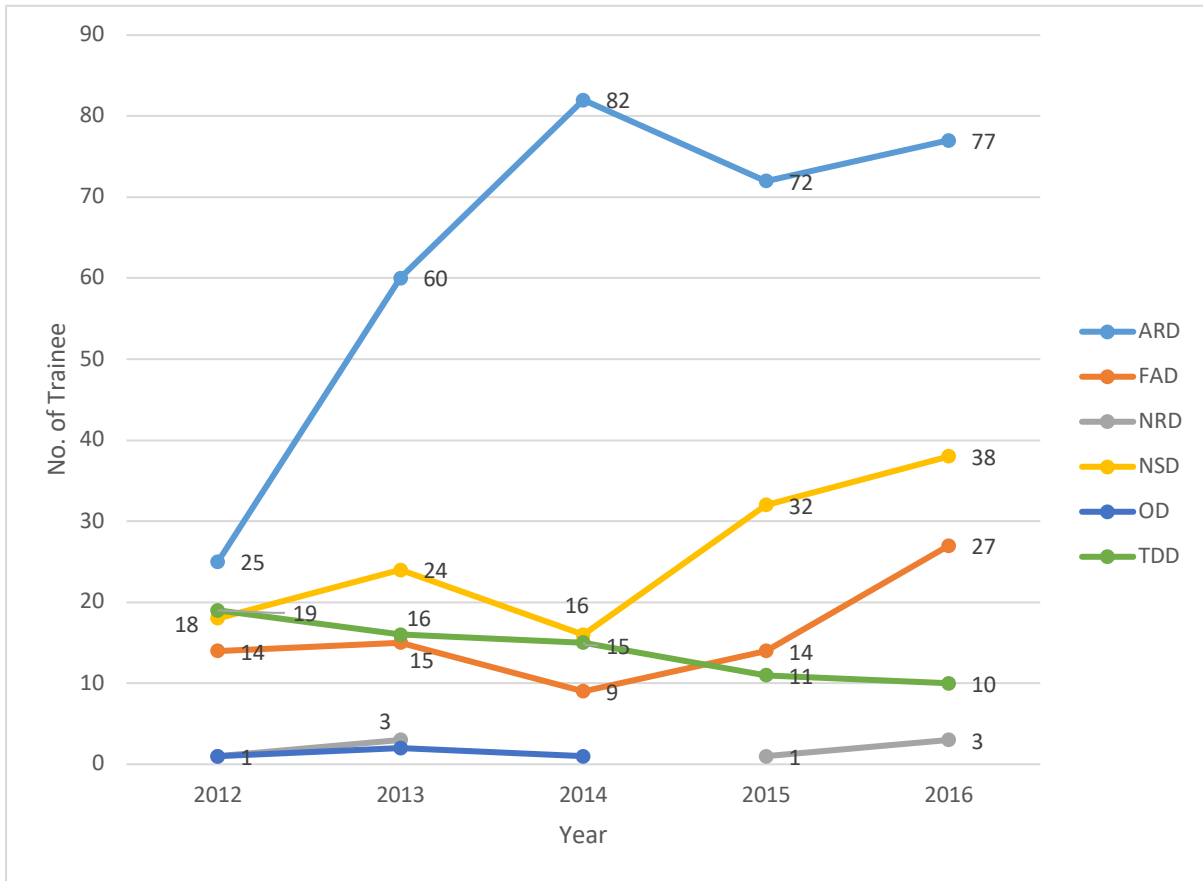


Figure 21. Trends in the number of accepted trainees per division from 2012 - 2016

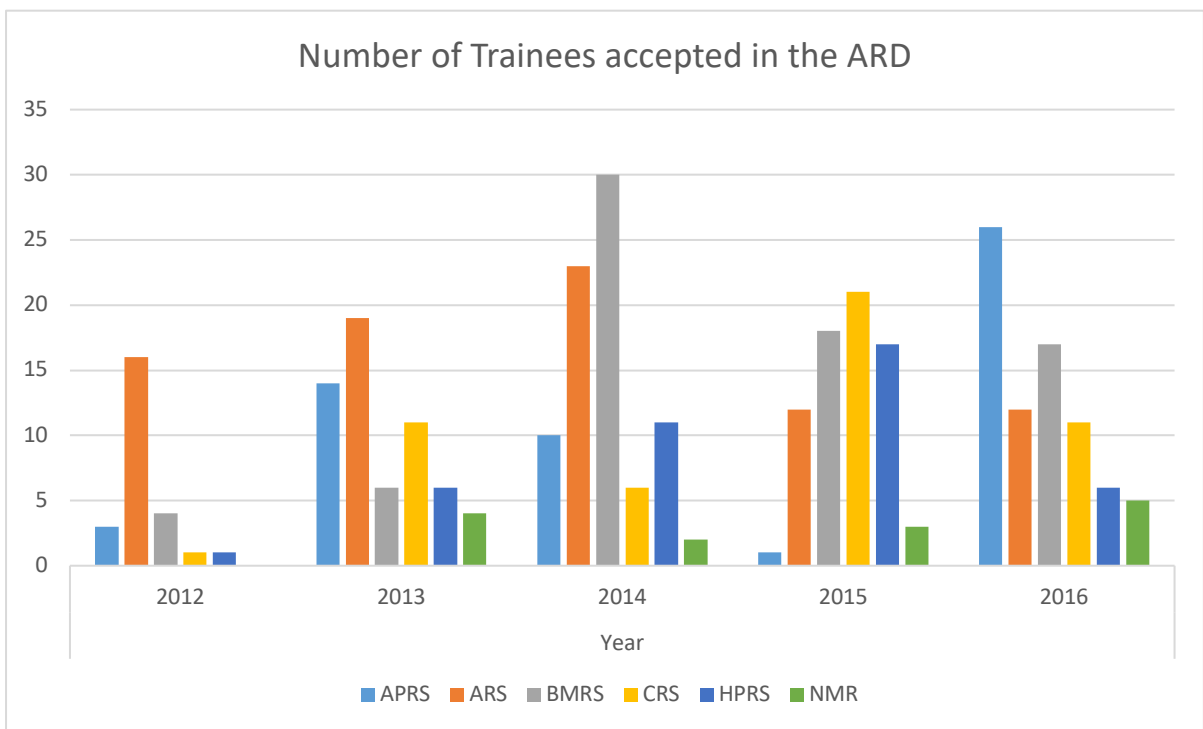


Figure 22. Frequency of accepted trainees per section in the Atomic Research Division (ARD)

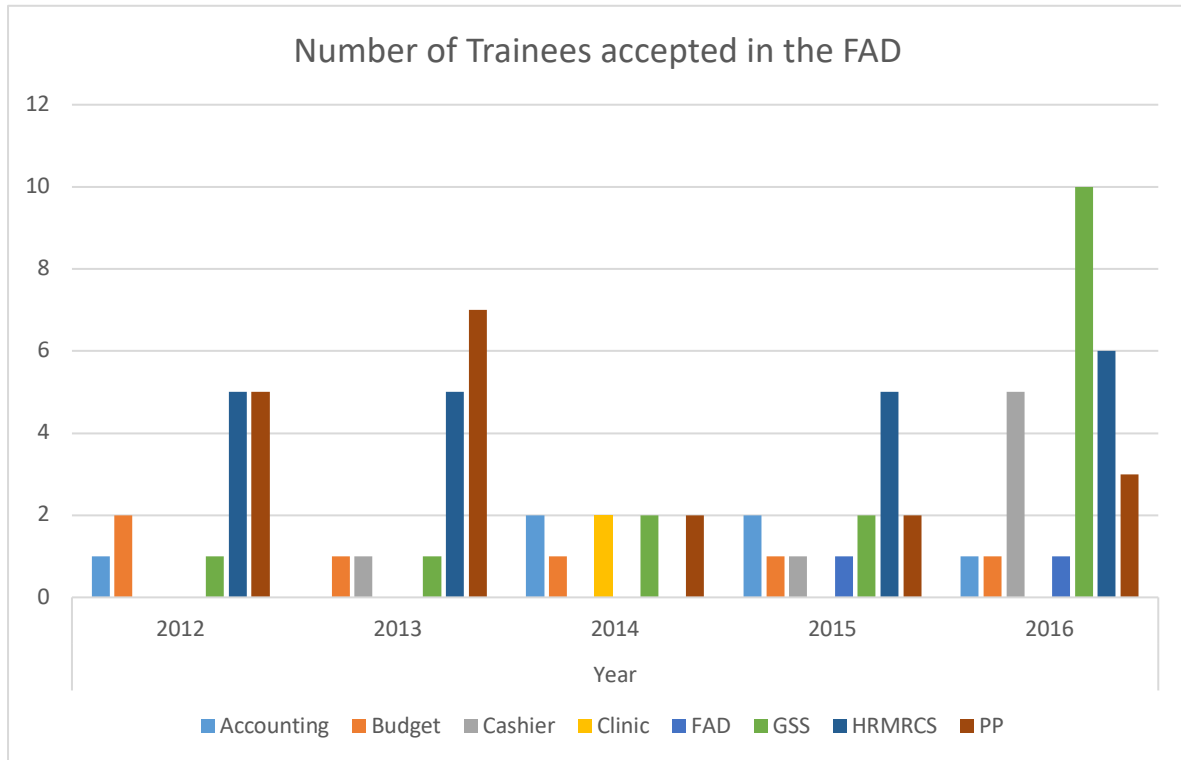


Figure 23. Frequency of accepted trainees per section in the Finance and Administration Division (FAD)

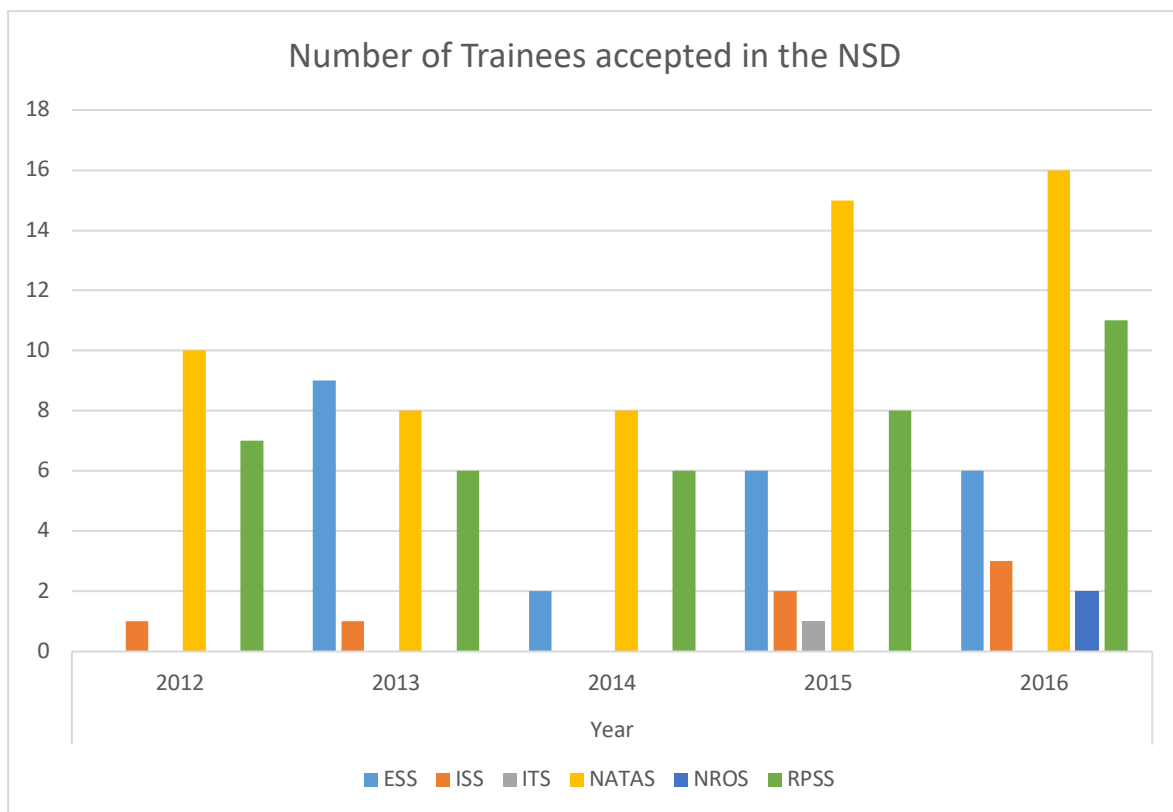


Figure 24. Frequency of accepted trainees per section in the Nuclear Services Division (NSD)

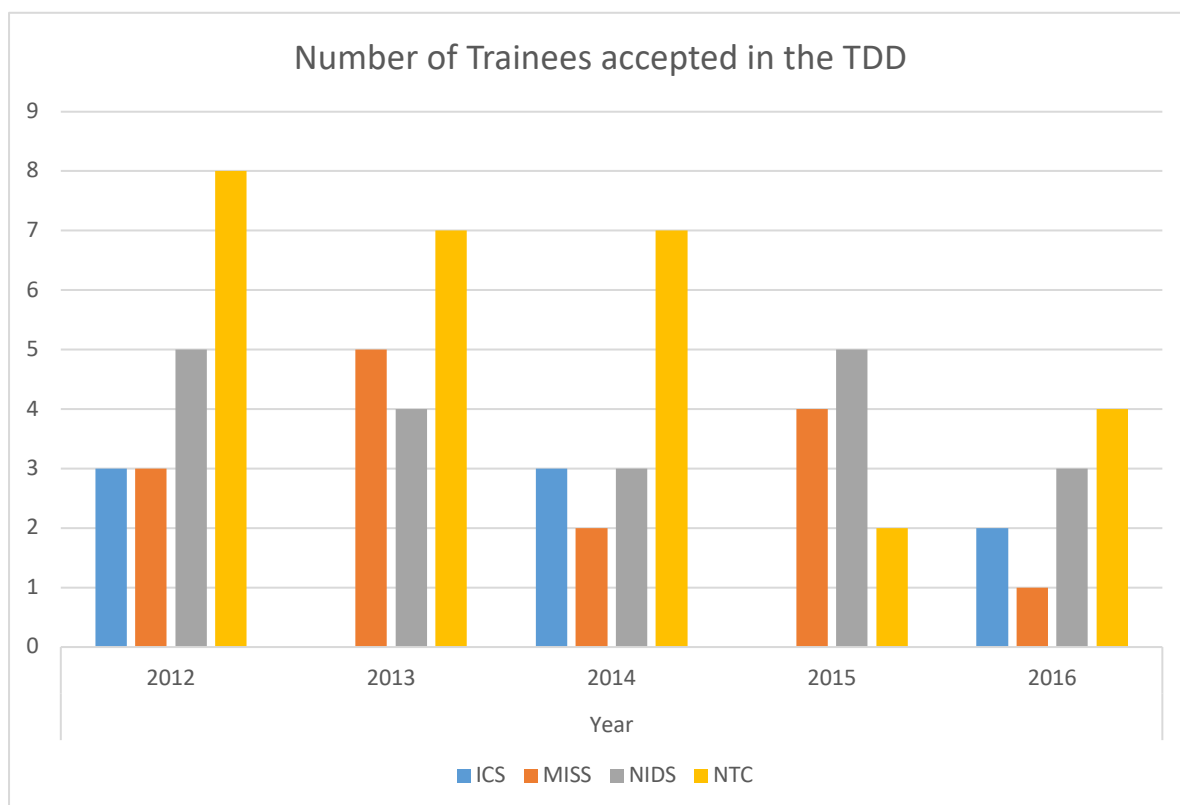


Figure 25. Frequency of accepted trainees per section in the Technology Diffusion Division (TDD)

Table 21. Total number of male and female trainees accepted in the OJT program from 2012 - 2016

	2012	2013	2014	2015	2016
<b>Male</b>	31	57	58	70	86
<b>Female</b>	47	63	65	60	69
<b>Total</b>	78	120	123	130	155

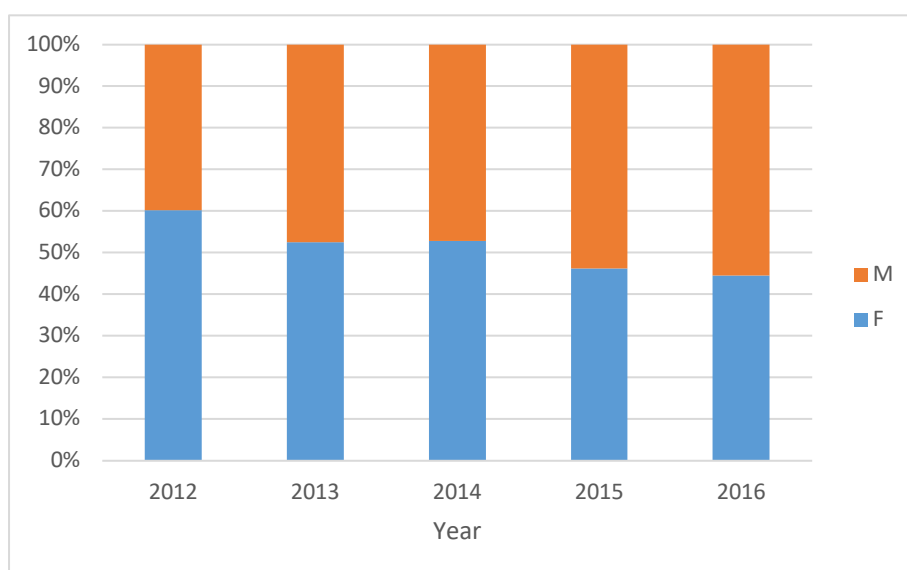
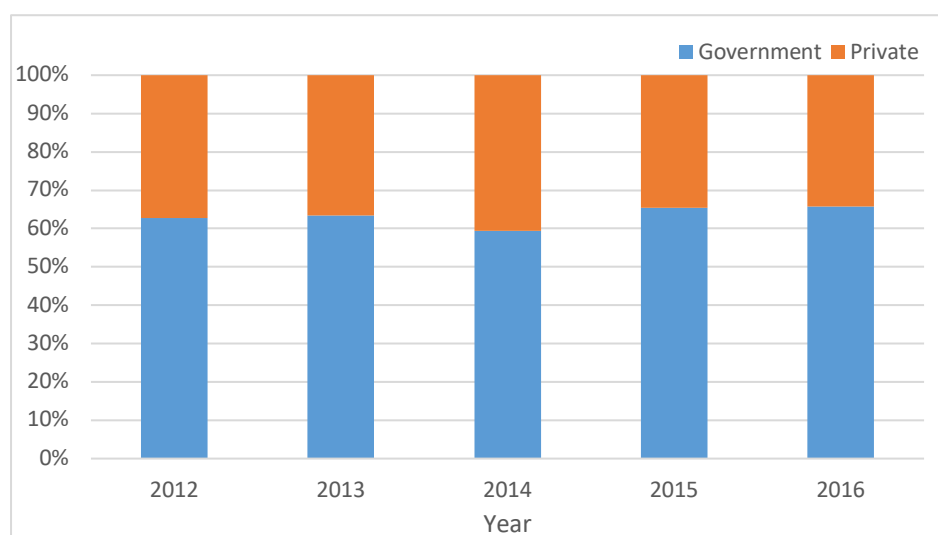


Figure 26. Percentage of male and female trainees accepted in the OJT program from 2012 – 2016

**Table 22.** Total number of accepted trainees affiliated to government or private schools from 2012 - 2016

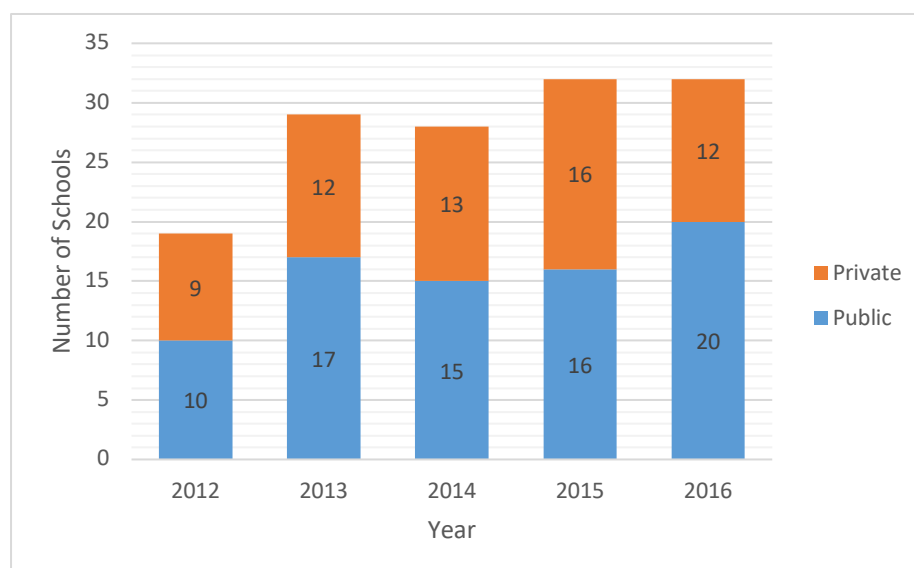
	2012	2013	2014	2015	2016	Total
<b>Government/Public</b>	49	76	73	85	102	385
<b>Private</b>	29	44	50	45	53	221
<b>Total</b>	78	120	123	130	155	606



**Figure 27.** Percentage of accepted trainees affiliated to government or private schools from 2012 – 2016

**Table 23.** Number of public and private schools affiliated to accepted trainees from 2012 - 2016

	2012	2013	2014	2015	2016	Total
<b>Government/Public</b>	10	17	15	16	20	78
<b>Private</b>	9	12	13	16	12	62
<b>Total</b>	19	29	28	32	32	140



**Figure 28.** Number of schools affiliated to accepted trainees from 2012 – 2016



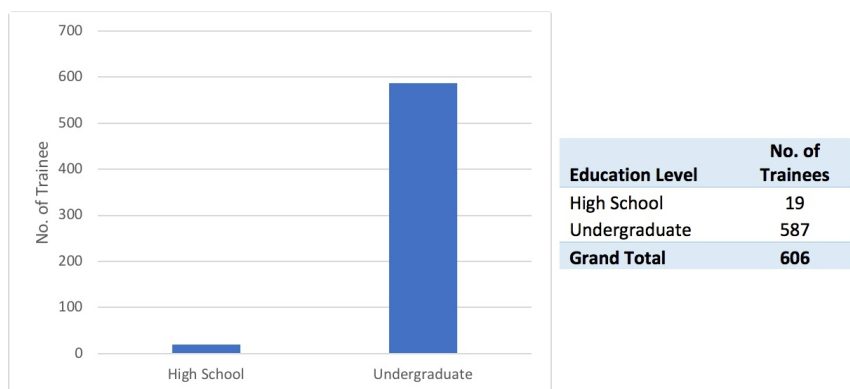


Figure 29. Total number of accepted trainees from 2012 – 2016 clustered according to level of education.

Table 24. Classification of accepted trainee according to fields of study for the year 2012 - 2016

	2012	2013	2014	2015	2016	Total
<b>Biology</b>	20	24	50	28	18	<b>140</b>
<b>Chemistry</b>	8	17	18	32	21	<b>96</b>
<b>Science Education</b>	1	-	-	-	5	<b>6</b>
<b>High School</b>	0	6	3	2	4	<b>19</b>
<b>IT / Engineering</b>	18	28	18	32	38	<b>134</b>
<b>Non-Science</b>	16	17	14	7	21	<b>75</b>
<b>Other Science Related Fields</b>	2	3	3	6	1	<b>15</b>
<b>Physics</b>	9	25	17	23	47	<b>121</b>
<b>Total</b>	<b>78</b>	<b>120</b>	<b>123</b>	<b>130</b>	<b>155</b>	<b>606</b>

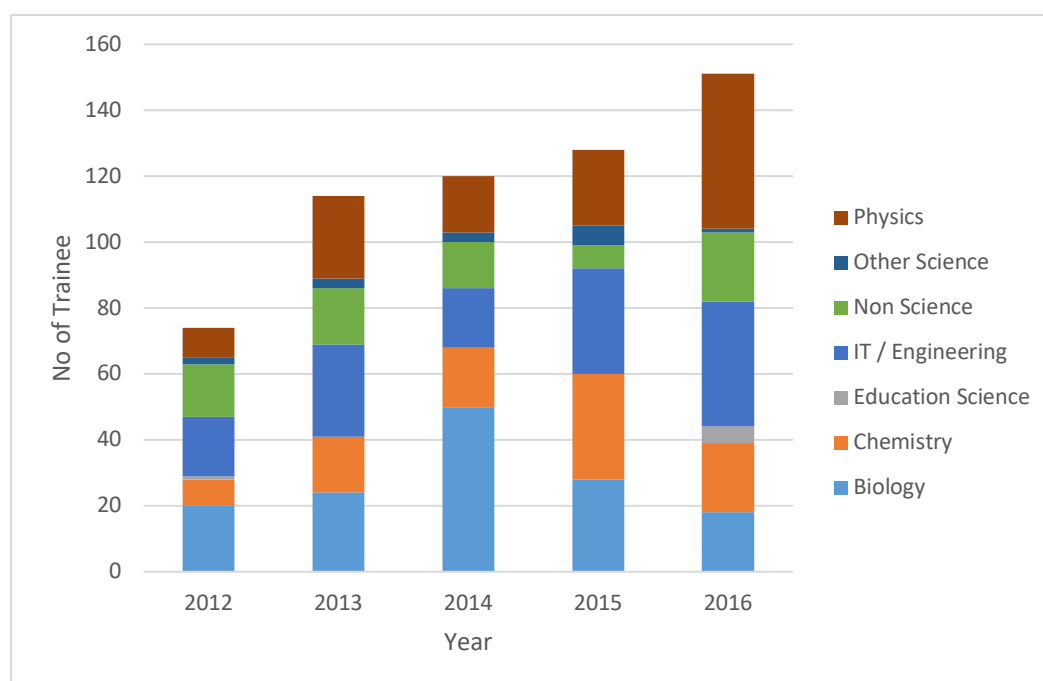


Figure 30. Fields of study/Specialization of accepted undergraduate trainees from 2012 – 2016

Table 25. Frequency of accepted trainees per school or university from 2012 - 2016

Name of School/University	2012	2013	2014	2015	2016	Total
ACLC			1	3		4
Adamson University				2	2	4
AMA	1	9	5	3	8	26
Asian Institute of Computer Studies		4				4
Ateneo de Manila University		1		8	7	16
Bestlink College of the Philippines	9	4				13
Bicol University				1	1	2
Bulacan State University		5	1	10	5	21
Canaway State University Lanao Del Norte					1	1
Cavite State University		1				1
Central Colleges of the Philippines			2			2
Central Luzon State University			5			5
Colegio De Montalban					7	7
Colegio De Sta. Teresa De Avila				1		1
Datemex			1			1
De La Salle University	4	7	1	3	3	18
Dong-A University			7			7
Eulogio Amang Rodriguez Institute of Science and Technology	3	9		7	8	27
Far Eastern University			13	4	1	18
Gardner College					1	1
Gateways Institute of Science and Technology					3	3
Hanbat National University				2		2
ICCT Colleges			2	1		3
Institute of Creative Computer Tech.			1			1
Mapua Institute of Technology		1		1	3	5
Mariano Marcos State University		2	2	2	8	14
Marikina Polytechnic College					4	4
Mindanao State University - Iligan Institute of Technology					9	9
National College of Business and Arts			2			2
New Era University	1	1	3	2	7	14
Not Specified	1			3		4
Our Lady of Fatima University		2	4	4	5	15
Pamantasan Lungsod ng Valenzuela	4					4
Pamantasan ng Montalban	8	10				18
Pampanga Agriculture College			3			3
Phil. Science High School - Bicol					2	2
Phil. Hort. Cultural Society Inc.				1		1
Phil. Normal University		5		3		8
Phil. Sci. High School- Cagayan Valley	3					3
Phil. Sci. High School- Southern Mindanao		1				1
Phil. Science High School - Bicol			1	2		3
Phil. Science High School - Main	1	3	2			6
Phil. Science High School - Southern Mindanao					1	1

Name of School/University	2012	2013	2014	2015	2016	Total
Phil. Science High School- Cagayan Valley Campus		2				2
Philippine Normal University	6		5		5	16
Pamantasan ng Lungsod ng Manila		6	7	8	5	26
Polytechnic University of the Philippines	6	7	10	12	6	41
Quezon City Polytechnic University		2				2
Rizal Technological University	13	10	16	6	4	49
Romblon State University				4		4
San Mateo Municipal College			7			7
St. Joseph College of Bulacan	2	2				4
St. Paul University Quezon City	4	6				10
STI Novaliches	6					6
Tarlac State University				6	6	12
Technological Institute of the Phil.		1		1		2
Technological University of the Philippines		1	3			4
The Meridian International Learning Experience					1	1
University of California, Los Angeles	1					1
University of Caloocan City				4		4
University of Rizal System					6	6
University of San Carlos				1		1
University of Santo Tomas		6	8	6	12	32
University of the Philippines	2	5	5	5	1	18
University of the Philippines - Diliman					6	6
University of the Philippines - Los Baños	3	3	1		8	15
University of the Philippines - Manila		4	5	12	9	30
University of the Philippines- Visayas Miag-ao Campus				2		2
<b>Total</b>	<b>78</b>	<b>120</b>	<b>123</b>	<b>130</b>	<b>155</b>	<b>606</b>

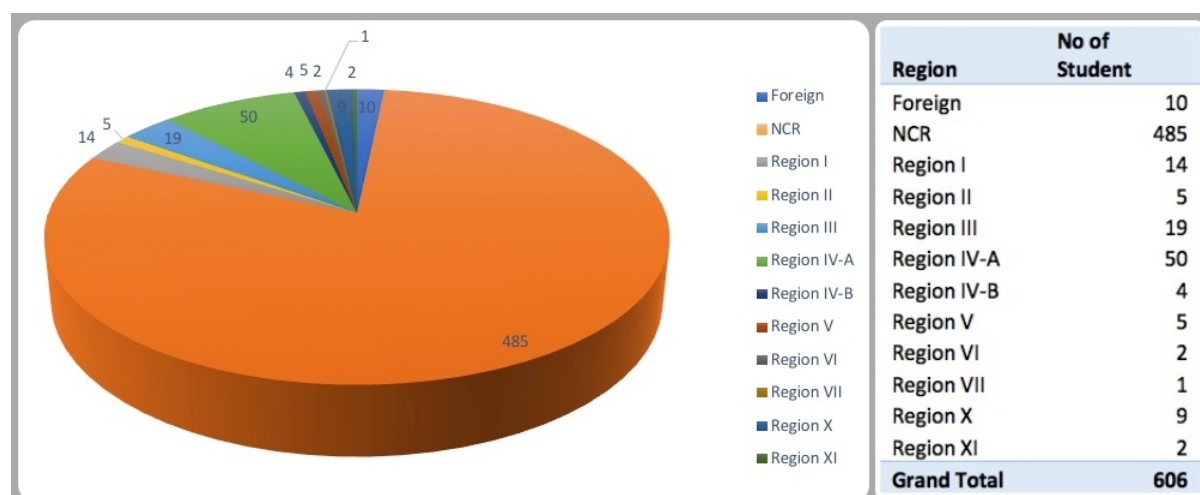


Figure 31. Total number of trainees from 2012 – 2016 clustered per home region of sending institution.

**Table 26.** Frequency of trainees per number of hours rendered in the OJT program for years 2012 - 2016

<b>Number of Hours</b>	<b>2012</b>	<b>2013</b>	<b>2014</b>	<b>2015</b>	<b>2016</b>	<b>Total</b>
<b>80</b>				2	4	<b>6</b>
<b>100</b>	4	4	2	15	3	<b>28</b>
<b>104</b>	3	2				<b>5</b>
<b>120</b>	2	5	6	11	6	<b>30</b>
<b>144</b>	2		1		7	<b>10</b>
<b>150</b>	13	12	5	6	4	<b>40</b>
<b>160</b>		5	9	5	5	<b>24</b>
<b>162</b>	3					<b>3</b>
<b>180</b>		3				<b>3</b>
<b>200</b>	10	25	50	22	21	<b>128</b>
<b>240</b>	10	16	11	21	35	<b>93</b>
<b>250</b>		1			3	<b>4</b>
<b>260</b>				4	2	<b>6</b>
<b>270</b>				6		<b>6</b>
<b>280</b>			2	2	2	<b>6</b>
<b>300</b>	2	30	10	18	38	<b>98</b>
<b>320</b>					4	<b>4</b>
<b>324</b>					6	<b>6</b>
<b>350</b>		1				<b>1</b>
<b>360</b>	13	6	16	6	5	<b>46</b>
<b>400</b>		1		1		<b>2</b>
<b>450</b>			2			<b>2</b>
<b>480</b>					6	<b>6</b>
<b>486</b>	14	2		3		<b>19</b>
<b>500</b>		5	2		4	<b>11</b>
<b>520</b>				4		<b>4</b>
<b>600</b>		1				<b>1</b>
<b>Not Reported</b>	2	1	7	4		<b>14</b>
<b>Grand Total</b>	<b>78</b>	<b>120</b>	<b>123</b>	<b>130</b>	<b>155</b>	<b>606</b>

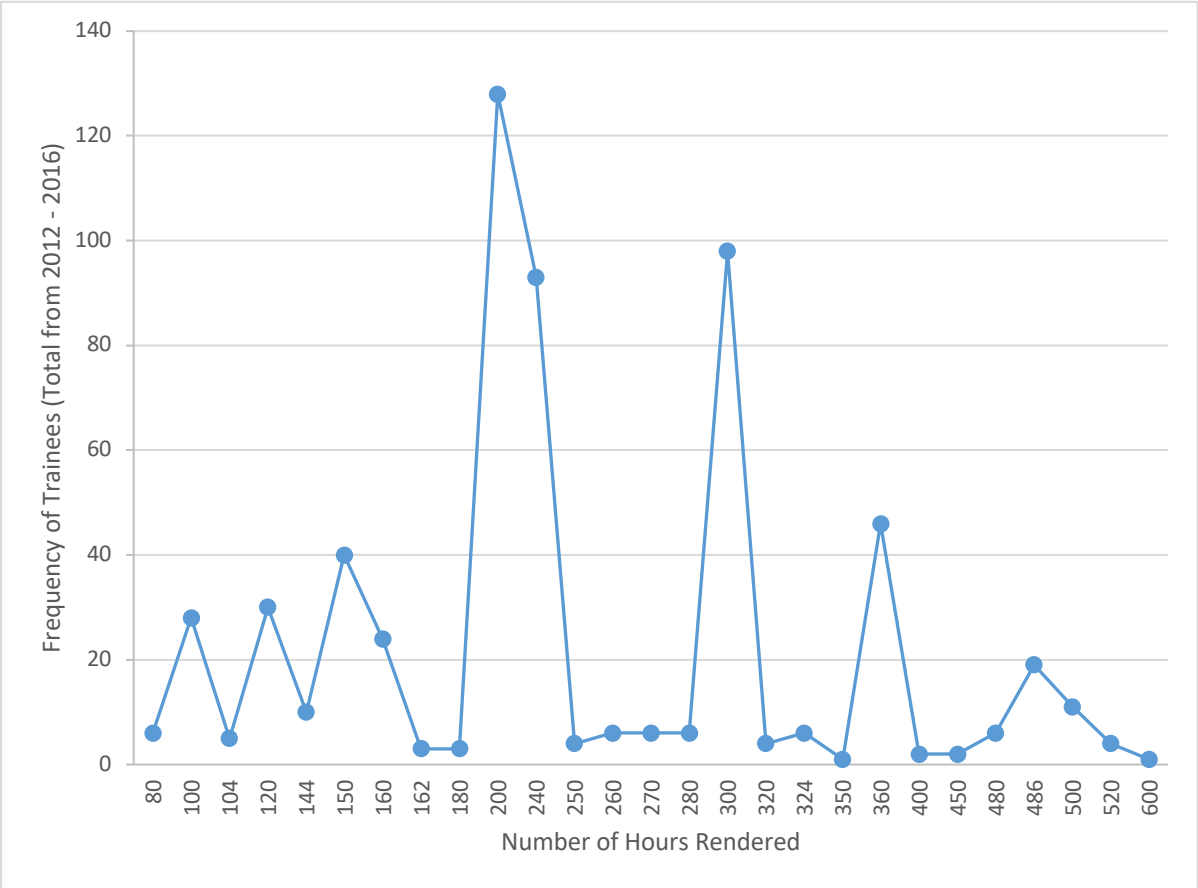


Figure 32. Frequency of trainees (Total from 2012 – 2016) per number of hours rendered in the OJT program

*Editors and Contributors:*

Albelda, Jasmine Angelie V.  
Astronomo, Alvie A.  
Dagasdas, Abigail C.  
Solmeron, Williard B.  
Belgera, Leah C.

*Data Visualization:*

Anzures, Louie Abram. C.  
Laoang, Laurel

*Cover Design:*

Matias, Elmeron I.



Republic of the Philippines  
Department of Science and Technology

**PHILIPPINE NUCLEAR RESEARCH INSTITUTE**